

# **MWERA 2012 Conference Program**

November 7-10, 2012

Hilton Orrington Hotel

Evanston, Illinois

[www.mwera.org](http://www.mwera.org)



**Altgeld Hall, Northern Illinois University, DeKalb, IL**

# MWERA 2012 Conference Program: Table of Contents

<b>Welcome to MWERA 2012</b>	2
General Information	3
Conference Events and Highlights	4
Professional Development Workshops	6
MWERA Leadership	8
Proposal Reviewers	9
<b>Conference Registration and Hotel Reservation</b>	
General Guidelines	11
Conference Registration	12
Hilton Orrington Hotel Reservations	13
Directions to the Hilton Orrington Hotel	14
<b>Chronological Listing of Sessions</b>	
<b>Wednesday</b>	
Professional Development Workshops	16
<b>Thursday</b>	
Presidential Address (Cynthia Campbell, Northern Illinois University)	19
Association Council Meeting	21
New Member Welcome	21
President's Cracker Barrel Social	27
<b>Friday</b>	
MWERA Business Meeting (Division Chairs & Co-Chairs)	30
Invited Speakers (Division Business Meetings)	31
Keynote Address (Larry Hedges, Northwestern University)	33
MWERA Division Chair Meeting (Orientation and Conference Feedback)	38
Community-Based Event: Voices of Young Latina Mothers	39
<b>Saturday</b>	
MWERA Board of Directors' Meeting	39
<b>References</b>	
Cross-Index to Session Sponsors	40
Subject Index	42
Index of Session Participants	45
Directory of Conference Participants	48
Hotel Map	53
Conference-At-a-Glance	54
<i>Mid-Western Educational Researcher</i> Call for Manuscripts	57
Gift Membership to MWERA	59

*Welcome to MWERA 2012!*

*Integrating Evidence-Based  
Practices in Education*



On behalf of the Board of Directors, officers, and Program Committee, I am pleased to welcome you to the 2012 annual meeting of the Mid-Western Educational Research Association (MWERA). We have a very exciting program this year, with a wide array of choices for all conference participants. The program is comprised of keynote addresses and invited speakers. Additionally, we have a quality collection of research-based papers, workshops, poster sessions, alternative sessions, research in progress, and symposia, all of which went through a rigorous peer-review process. I wish to offer my sincere gratitude to all of the conference committee personnel who worked diligently toward putting this program together.

In particular, we are excited to see so many varied topics and session formats that fit the theme of the conference: *Integrating Evidence-Based Practices in Education*. The theme brings together various entities within the field of education to discuss and reflect upon the concept of integrating evidence-based practices. Understanding how evidence-based practices are conceptualized, studied, and used in education is a timely and consequential endeavor, which may help researchers, practitioners, and those outside of the field begin a dialogue and possible relationship related to promising practices, predicated on evidence, that may be worth exploring and/or applying in different settings.

The conference begins at 2:00 PM on Wednesday, November 7 with six dynamic, afternoon and evening workshops ranging from learning and instruction to measurement and research methodology to teaching and teacher education. We are honored to host **Dr. Cynthia Campbell**, Associate Professor of Educational Technology, Research, and Assessment at Northern Illinois University, for her Presidential Keynote Address – *MWERA: Looking Back 35 Years* – which will be delivered on Thursday, November 8 at 9:30 AM in the Hinman Auditorium. This presentation will be a content review of MWERA’s archived conference programs that reveal a rich and cutting edge history of era-based research initiatives. Following this look back in time, Dr. Campbell will moderate a past Presidents’ panel to share their unique experiences and engage in lively conversation about the future of the organization.

We are extremely privileged to host the Luncheon Keynote Address, which will feature **Dr. Larry V. Hedges**, Board of Trustees Professor of Statistics and Professor of Educational and Social Policy at Northwestern University. Dr. Hedges’ address – *The Crisis in Education Research Capacity* – will be delivered on Friday, November 9 at 12:00 PM in the Grand Ballroom. This presentation will look at the various areas of underinvestment in systematic research on the functioning of education.

I invite you to renew and establish friendships as well as enrich your professional knowledge. Please visit with me during the conference if there is anything that I can do to enhance your experience.

Cordially,

David Walker, Ph.D.  
MWERA Vice President and 2012 Program Chair

## *Conference Events and Highlights*

A series of six **professional development workshops** will be held on Wednesday from 2:00 to 8:00 PM in the Cummings and Bonbright Rooms. Members are encouraged to attend.

On Thursday at 9:30 AM, **Dr. Cynthia Campbell** will present her Presidential Keynote Address in the Hinman Auditorium. Dr. Campbell will be available for further discussion following the Keynote Address.

The **MWERA Association Council** will hold its annual meeting over lunch on Thursday at 12:00 PM in the Globe Private Dining Room. All current Association Council members are expected to attend.

**New Members** are encouraged to attend the **New Member and New Student Member Welcome Session** on Thursday at 1:40 PM in the Haven Room. Please come and meet other MWERA members—both new and old—and find out why we are proud of our research efforts, collegiality, support, and friendships. **Student Members** are especially encouraged to attend!

The highlight of Thursday evening will be the **President's Cracker Barrel Social**, scheduled from 6:00 to 7:30 PM in the Heritage Ballroom. Your host will be the current president of MWERA, **Dr. Cynthia Campbell**. The social is a great way to unwind and catch up with your colleagues! Hors d'oeuvres will be provided as well as musical entertainment. There will be a cash bar for members 21 years of age and older.

Everyone available is encouraged to attend the annual **MWERA General Business Meeting** scheduled on Friday from 9:30 to 10:30 AM in the James Room. President Cynthia Campbell will preside over an agenda of issues critically important to the association. Your input is both needed and welcome!

In an effort to keep members from having to choose between Division meetings and presentation sessions, **Division Business Meetings** have been scheduled in two timeframes across Friday morning. While the business meetings are shorter and more are scheduled simultaneously, a careful attempt was made to minimize conflict in Divisions where memberships historically overlap. Two of the Division meetings will have invited speakers (Divisions H and J). Remember that participation in a Division is an important part of MWERA membership. Please acquaint yourself with some of your colleagues in a Division and become active, including helping to recruit new members and assisting in the planning of next year's conference.

At the **Friday Luncheon Keynote Address**, we are honored to have **Dr. Larry V. Hedges** as our speaker. Dr. Hedges' address will discuss issues associated with the crisis in education research capacity. *Remember, you must pre-register for the conference in order to be guaranteed a seat at the luncheon.* Following the luncheon, Dr. Hedges will be available for questions in the Grand Ballroom beginning at 1:40 PM.

Current **Mid-Western Educational Researcher (MWER)** reviewers, and **MWERA members interested in reviewing** for *MWER*, should attend the informational session on Friday at 4:40 PM in the Mulford Room.

Both 2012 and 2013 Division Chairs and Co-Chairs should attend the **Division Chair Meeting (Orientation and Conference Feedback)** on Friday at 5:20 PM in the North Shore Room.

The highlight of Friday evening will be a community-based session, **Voices of Young Latina Mothers**, scheduled from 6:00 to 7:30 PM in the James Room. Please join us for an evening of experiences and reflection from students in an alternative high school residing in the Humboldt Park area of Chicago.

**Dr. David Walker**, the 2012 Program Chair, and **Dr. Francis Godwyll**, the 2013 Program Chair, are very interested in your feedback. Please complete a conference evaluation so that necessary changes can be made for the 2013 Annual Meeting in Evanston, IL.

## *General Information*

The 2012 annual meeting of the Mid-Western Educational Research Association will be held from Wednesday, November 7 to Saturday, November 10 at the Hilton Orrington Hotel in Evanston, Illinois. On Wednesday, conference registration will begin at 12:00 PM and pre-conference workshops will start at 2:00 PM and go until 8:00 PM. Thursday and Friday will consist of research papers presented in a variety of format sessions, as well as other workshops, invited speakers, meetings, and social events. The conference will conclude following the Board of Directors' meeting at 12:00 PM on Saturday.

**Meeting Registration** is expected of everyone attending or participating in the 2012 annual meeting of the Mid-Western Educational Research Association. Advance payment for full registration for the meeting, as well as current MWERA membership dues, is expected of everyone. Registrants are provided a MWERA-12 name tag, which must be worn at all times during the conference. Those planning to attend MWERA-12 are strongly encouraged to pre-register for the conference and the pre-conference workshops and also make hotel reservations as soon as possible. Both conference pre-registrations and hotel reservations must be received by October 7, 2012. Conference registrations after October 7th may not be received in time for processing. On-site payment in the form of cash or a personal check will be required. **On-site registration and packet pick-up will be available at the registration desk on the 9th floor (foyer area) of the Hilton Orrington Hotel at the following times:**

<b>Wednesday, November 7:</b>	<b>12:00 PM - 8:00 PM</b>
<b>Thursday, November 8:</b>	<b>7:00 AM - 6:00 PM</b>
<b>Friday, November 9:</b>	<b>7:00 AM - 12:00 PM and 1:40 PM - 4:40 PM</b>

**Membership** in the Mid-Western Educational Research Association provides reduced conference registration fees and access to the *Mid-Western Educational Researcher*, the official MWERA publication. Attendees are encouraged to join. **Conference participants must be paid members for 2012.**

## **Session Formats**

### *Paper Presentation*

Paper sessions are intended to allow presenters the opportunity to make short, relatively formal presentations in which they summarize their papers to an audience. Typically, three to four, and in some instances two, individual papers dealing with related topics are grouped into a single session running 1 hour and 20 minutes. Each paper presentation is allowed approximately 15 minutes (depending on the number of presentations in a given session) to present the highlights of the paper. A Session Discussant is also allowed 10-15 minutes, following all papers, for comments, synthesis, and/or constructive feedback. A Session Chair moderates the entire session. Ideally, presenters should provide complete copies of their papers to all interested audience members or, if not feasible, should bring a one-page summary of the study highlights along with their contact information.

All presenters are expected to upload their completed paper(s) through <a href="http://www.mwera.org">www.mwera.org</a> by <b>October 7th</b> .
---

Discussants who do not have complete papers by the due date may elect not to include that paper in the discussion.
--

### ***Poster***

Poster sessions are intended to provide opportunities for interested individuals to participate in a dialogue with the presenter(s). Presenters are provided an area in which to display a table-top poster, ancillary handouts, or other audio/visual materials. Ideally, presenters should provide complete copies of their papers to all interested audience members or, if not feasible, should bring a one-page summary of the study highlights along with their contact information.

### ***Symposium***

A symposium is intended to provide an opportunity for examination of specific problems from a variety of perspectives. Symposium organizers are expected to identify the topic or issue, identify and ensure the participation of individual speakers who will contribute to the session, prepare any necessary materials, and facilitate the session. A Session Chair moderates the entire session. It is suggested, that the speakers or symposium organizer will provide interested individuals with one (or more) papers relevant to and/or drawn from the symposium.

### ***Workshop***

Workshops are intended to provide an extended period of time during which the workshop leader helps participants develop or improve their ability to perform some process (e.g., how to provide clinical supervision or conduct an advanced statistical analysis). Organizers may request from 1 to 2 hours, and are responsible for providing all necessary materials for participants. Most workshops are scheduled for Wednesday afternoon and evening, although others may be scheduled throughout the conference.

### ***Alternative Session***

The form, topics, and format of alternative sessions are limited only by the imagination and creativity of the organizer. These options are intended to afford the most effective method or approach to disseminating scholarly work of a variety of types. The organizer of alternative sessions is responsible for all major participants or speakers, developing and providing materials, and chairing the session.

### ***Research in Progress***

Research in Progress is a new session format this year that affords individual researchers, particularly graduate students and early-career scholars, the opportunity to submit evidence-based works that are not fully realized and/or completed, but have enough progression and fidelity to warrant dissemination and discussion among peers. A Session Discussant is also allowed 10-15 minutes, following all papers, for comments, synthesis, and/or constructive feedback. A Session Chair moderates the entire session.



The Hilton Orrington Hotel

## *Professional Development Workshops*

### **Laughing and Learning: An Alternative to Shut up and Listen**

Wednesday, 2:00 PM to 3:55 PM --- **Bonbright** (BO)---*Peter Mark Jonas*, Cardinal Stritch University

*A variety of theoretical and empirical studies show that individuals can use humor not only to increase learning comprehension, but also to enhance the learning environment. This workshop offers an analysis of the research focusing on the benefits of using humor as a teaching tool. By grounding the work in empirical studies, the interactive workshop provides a theoretical model and current active processing to connect practical examples demonstrating eight ways to use humor to enhance the learning environment. Through the use of effective research and brain-based concepts, the workshop will integrate theory with very practical advice in the form of easy to follow research-based guidelines. Learn how easy it is to use various forms of humor to improve teaching, increase learning, and enhance the educational environment.*

### **No Assembly Required: Methods and Materials for P-Project Policy Work**

Wednesday, 2:00 PM to 3:55 PM --- **Cummings** (CU)---*Pamela Konkol*, Concordia University-Chicago; *Erica Meiners*, Northeastern Illinois University; *Isabel Nunez*, Concordia University-Chicago; *Therese Quinn*, School of the Art Institute of Chicago

*Six years ago, the Pre-Professional Preparation Project was born out of an initial, quasi-formal assessment of LGBTQ presence in teacher preparation programs. Since then, we have expanded our assessment to include more programs, have engaged in three biennial phases of data collection, begun curricular and professional development projects, and have reported our findings in a variety of venues. In response to numerous requests, we have set-up a P-Project shop in other states. This workshop will provide an opportunity for participants to engage with the P-Project team, gather resources and implementation guides, and formulate a plan of action to take home and commence.*

### **Using Microsoft® Excel to Analyze Survey Data**

Wednesday, 4:00 PM to 5:55 PM --- **Bonbright** (BO)---*Beverly J. Dretzke*, University of Minnesota

*In this workshop, the participants will learn how to use the features of Microsoft® Excel to analyze survey data. The workshop will provide hands-on experience carrying out several analyses on sample data sets. Topics to be addressed include constructing frequency distributions using PivotTable; collapsing response codes (e.g., from a 4-point satisfaction scale to a 2-point scale); assigning verbal labels to numerical codes; cross tabulating two variables using Pivot Table; creating a template to calculate a chi-square test of independence; using the Analysis Toolpak to obtain descriptive statistics; carrying out an independent samples t-test; and constructing a correlation matrix. **Participants should bring a laptop computer to the workshop that has the 2007 or 2010 version of Microsoft® Excel.***

### **Using Short, Humorous Videos (and Research) to Enhance Teaching**

Wednesday, 4:00 PM to 5:55 PM --- **Cummings** (CU)---*Peter Mark Jonas*, Cardinal Stritch University

*The background, character, and learning styles of our students are drastically changing. Consequently, the teaching techniques needed to address these changes are also varying. In addition, technology has taken on its own life in education as schools try to address the new knowledge, skills, and dispositions necessary for the 21st century. This workshop will explain the research and practice of using technology in the form of short videos as a main component of the learning process. This new teaching style is called videagogy = video + pedagogy.*

## **An Introduction to R: The Basics**

Wednesday, 6:00 PM to 7:55 PM --- **Bonbright (BO)**---*Leslie Vanessa Rosales de Veliz, Ohio University; Shannon David, Ohio University; Danielle McElhiney, Ohio University; Marsha Lewis, Ohio University; Emily Price, Ohio University, Salvador Castro, Ohio University, Moira Ragan, Ohio University, Elizabeth Smith, Ohio University, Gordon Brooks, Ohio University*

*The primary purpose of this workshop is to introduce a free and powerful software package, R, and to prepare workshop participants to use R for research and applied statistics. In particular, the workshop will be divided into three main parts: (a) data management in R, (b) descriptive statistics in R, and (c) basic and intermediate statistical analyses in R. The workshop will assume no previous knowledge of R. **Participants should bring their own computers either with R installed or a CD-ROM drive (a CD will be provided during the workshop from which R can be run).** The R installation program can be downloaded at <http://cran.case.edu/> or other mirror sites available via the CRAN link at <http://www.r-project.org/>. Note: we also recommend that R-Commander, called Rcmdr, be installed and loaded prior to the workshop. Handouts will be provided during the workshop.*

## **Design Literacy for Non-Designers: Experience the Fundamentals of Design Practice to Enhance Curriculum Development and Content Delivery**

Wednesday, 6:00 PM to 7:55 PM--- **Cummings (CU)**---*Robyn Richardson, Savannah College of Art and Design*

*The goal of this workshop is to teach fundamental design literacy. Just as we learned the fundamentals of mathematics and language in early schooling, the basics of design can be taught to and be beneficial for non-designers. Mathematics and language literacy are not reserved for an advanced level of educational achievement, but are basic tools for developing the ability to learn a system. Design literacy, like mathematics and language, begins by learning and then applying basic system elements in practice. Though this session will not create expert designers, one need not be a degreed mathematician to solve basic math problems. The idea is to provide basic design literacy to participants so that they can better "read" and "write" design systems in their own lives and begin to reflect upon and enhance curricular development through the lens of design principles and practices.*

## **An Introduction to R: Monte Carlo Simulation**

Friday, 8:00 AM to 9:20 AM --- **North Shore (NO)**---*Emily Price, Ohio University; Marsha Lewis, Ohio University; Leslie Vanessa Rosales de Veliz, Ohio University; Danielle McElhiney, Ohio university; Shannon David, Ohio University, Gordon Brooks, Ohio University*

*The primary purpose of this workshop is to introduce a free and powerful software package, R, and to prepare workshop participants to use R in Monte Carlo simulations for methodological research. In particular, the workshop will be divided into three main parts: (a) data generation in R, (b) basic Monte Carlo programming (e.g., loops), and (c) running simulations (e.g., investigating Type I errors). The workshop assumes basic operational knowledge of R. **Participants should bring their own computers either with R installed or a CD-ROM drive (a CD will be provided during the workshop from which R can be run).** The R installation program can be downloaded at <http://cran.case.edu/> or other mirror sites available via the CRAN link at <http://www.r-project.org/>. Handouts will be provided during the workshop.*



## *MWERA Leadership*

### **Board of Directors**

#### **Immediate Past President**

Gordon Brooks, Ohio University

#### **President**

Cynthia Campbell, Northern Illinois University

#### **President-Elect**

Doug Feldmann, Northern Kentucky University

#### **Vice-President**

David A. Walker, Northern Illinois University

#### **Secretary**

Aimin Wang, Miami University

#### **Vice President-Elect**

Francis Godwyll, Ohio University

#### **Vice-President-Elect Elect** (ex-officio)

T. Mark Beasley, University of Alabama-Birmingham

#### **Member-at-Large**

Thomas J. Smith, Northern Illinois University

#### **Executive Officer** (ex-officio)

Sharon McNeely, Argosy University

#### **Historian** (ex-officio)

Tom Cody, Western Illinois University

#### **Co-Editors, *Mid-Western Educational Researcher*** (ex-officio)

Susan N. Kushner Benson, The University of Akron  
Kristin L. K. Koskey, The University of Akron  
Xin Liang, The University of Akron  
Jennifer Milam, The University of Akron  
Sandra Spickard Prettyman, The University of Akron

#### **Association Council: 2010-2012** (term ends at Friday Luncheon)

Kelly Bradley, University of Kentucky  
Jessica Cunningham, Georgetown College  
Eric Mansfield, Western Illinois University  
Neal McKenna, Kishwaukee College  
Greg Montalvo, Western Illinois University  
David Newman, Florida Atlantic University  
Angeline Stuckey, State University of New York-Oswego  
Bridgette Stuckey-Daner, Olive Harvey College  
Thomas J. Smith, Northern Illinois University

#### **Association Council: 2012-2014** (term begins Friday)

Katie Cripe, Youngstown State University  
John Hitchcock, Ohio University  
Theodore J. Kowalski, University of Dayton  
Cheu-jey Lee, Indiana University-Purdue University Fort Wayne  
Raeal Moore, The Ohio State University  
Delane Bender-Slack, Xavier University  
Larry Tinnerman, Indiana State University  
Teresa Young, Xavier University

### **Program Committee**

#### **Program Chair**

David A. Walker, Northern Illinois University

#### **Division A**

Dustin Derby, Palmer College of Chiropractic

#### **Division B**

Sharon A. Valente, University of St. Thomas-Houston

#### **Division C**

Marilyn Petty Glick, Indiana University-Kokomo

#### **Division D**

Kate Akers, Kentucky Department of Education

#### **Division E**

Tracey Stuckey-Mickell, The Ohio State University

#### **Division F**

Casey Hurley, Western Carolina University

#### **Division G**

Xi Zhao, Miami University

#### **Division H**

Janet K. Holt, South Illinois University-Edwardsville

#### **Division I**

Anne George, St. Xavier University  
Penny Soboleski, Bowling Green State University

#### **Division J**

Katrina Daytner, Western Illinois University

#### **Division K**

Sharon A. Valente, University of St. Thomas-Houston

#### **Division L**

Lynda Leavitt, Lindenwood University

#### **Association Council: 2011-2013**

Dustin Derby, Palmer College of Chiropractic  
Beverly J. Dretzke, University of Minnesota  
James Olive, Ashland University  
Jonnie Jill Phipps, The University of Akron  
Brandelyn Tosolt, Northern Kentucky University  
Sharon A. Valente, University of St. Thomas-Houston  
Judith Zimmerman, Bowling Green State University

Join us in congratulating our newly-elected officers:

- Mark Beasley, *Vice-President Elect, Elect*
- Tracey Stuckey-Mickell, *Secretary*
- New members of the *Association Council*

Congratulations to our newly-appointed officer:

- Gordon Brooks, *Executive Director*

## ***Proposal Reviewers***

The 2012 Program Committee wishes to express its appreciation to the following individuals who donated their time to assist in the process of reviewing **257 proposals!**

---

### **A**

Abla, Zipporah Wanjira, *Bowling Green State University*  
Ahmed, Areej Ahmed, *Ohio University*  
Akers, Kathryn Shirley, *Kentucky Department of Education/  
Kentucky P20 Data Collaborative*  
Allen, Amy, *The University of Toledo*  
Almond, Tasha Marie, *Mountain Plains Evaluation, LLC*  
Atuahene, Francis, *West Chester University of Pennsylvania*

### **B**

Brooks, Gordon, *Ohio University*

### **C**

Cabacungan, Gerald, *The University of Akron*  
Chai, Hannah, *Wright State University*  
Clarke, Laura, *Ball State University*  
Cody, Tom, *Western Illinois University*  
Cosmah, Michelle, *University of Cincinnati*

### **D**

Daytner, Gary, *Western Illinois University*  
Daytner, Katrina, *Western Illinois University*  
Derby, Dustin, *Palmer College of Chiropractic*  
Dretzke, Beverly J., *University of Minnesota*

### **E**

Edlefson, Carla, *Ashland University*  
Eells, Rachel J., *Concordia University-Chicago*  
Estudillo, Antonio, *Indiana University-Bloomington*

### **G**

George, Anne, *Saint Xavier University*  
Ghaffari, Masoud, *East Tennessee State University*  
Glick, Marilyn Petty, *Indiana University-Kokomo*  
Grabner-Hagen, Melissa, *Indiana University*

### **H**

Hamsher, Sarah, *Malone University*  
Han, Han, *Miami University*  
Hasebe, Yuki, *Western Illinois University*  
Henning, Mary Beth, *Northern Illinois University*  
Holbert, Romena Marie, *Wright State University*  
Holt, Janet K, *Southern Illinois University-Edwardsville*  
Howard, Kristine, *The University of Akron*  
Huang, Xiaodan, *Shawnee State University*

### **I**

Ingram, Debra, *University of Minnesota*

### **J**

Jacobsen, Linda Fraser, *University of Missouri-St. Louis*  
Johnson, Corey

### **K**

Kang, Seong-Yoon, *Indiana State University*  
Kanyongo, Gibbs, *Duquesne University*  
Katz, Susan J., *Roosevelt University*  
Kirk, Stacie, *Southern Illinois University-Edwardsville*  
Knutson, Nichole Marie, *University of South Carolina*

### **L**

Leavitt, Lynda, *Lindenwood University*  
Lee, Cheu-je, *Indiana University-Purdue University Fort  
Wayne*  
Li, Ting, *Miami University*  
Li, Wenshu, *Miami University*

### **M**

Maddocks, Amanda Mulcahy, *Concordia University-Chicago*  
Mansfield, Eric, *Western Illinois University*  
Martens, Nicholas J., *Savannah College of Art and Design*  
Mellor, Joel S., *The University of Akron*  
Mickell, Willie, *Ohio University*  
Miretzky, Debra, *Western Illinois University*  
Moore, Rose, *Fairfax County Public Schools*

### **N**

Neils-Strunjas, Jean, *Armstrong Atlantic State University*  
Nur-Awaleh, Mohamed A, *Illinois State University*

### **P**

Pasero, Spencer, *Fermilab Education Office*  
Paul, Kelli, *KP Research & Evaluation Consulting*  
Phipps, Jonnie Jill, *The University of Akron*

### **R**

Ramlo, Susan, *The University of Akron*  
Richardson, Robyn, *Savannah College of Art and Design*  
Rivera, Nicole Ruth, *North Central College/ Northern Illinois  
University*  
Ruble, Michelle Lee, *Douglas County School System*

## S

Saunders, Nancy G., *Indiana Wesleyan University*  
Schoper, Sarah, *Western Illinois University*  
Schroer, Joseph Earl, *Purdue University-North Central*  
Soboleski, Penny, *Bowling Green State University*  
Soegijardjo, Witriani, *University of Missouri-Columbia*  
Spudich, Christine, *Saint Louis University*  
Spudich, Dimana, *Saint Louis University*  
Stevens, Sharon, *Western Illinois University*  
Stuckey, Angeline, *State University of New York-Oswego*  
Stuckey-Mickell, Tracey, *The Ohio State University*

## T

Thomas, Elizabeth, *North Carolina State University*

## V

Valente, Sharon A, *University of St. Thomas-Houston*  
Vaughan, Winston E, *Xavier University*

## W

Walker, David A., *Northern Illinois University*  
Wang, Yikang, *Miami University*  
Whitney, Kelliann, *Blessed Sacrament School*  
Williams, Ron, *Western Illinois University*

## Y

Yu, Hanbing, *Miami University*

## Z

Zigler, Ted, *Wright State University*



## *Conference Registration and Hotel Reservations*

### **Hilton Orrington Hotel**

1710 Orrington Ave, Evanston, IL 60201 (Phone: 847-866-8700)

[www.hotelorrington.com](http://www.hotelorrington.com)



Attending MWERA begins with registering for the conference and reserving a room at the Orrington. These two steps require the completion of two different forms.

**DO NOT SEND YOUR CONFERENCE REGISTRATION TO THE HOTEL OR SEND YOUR HOTEL RESERVATION IN WITH YOUR CONFERENCE REGISTRATION!** This can delay your registration/reservation or result in not being registered for the conference and/or not having a place to stay in Evanston.

### *Pre-Registration and On-Site Registration*

MWERA allows both pre-registration and on-site registration; however, pre-registration is strongly encouraged. Pre-registrants have first opportunity to enroll in workshops, to purchase materials, and to attend the catered luncheon on Friday. Pre-registration is also less expensive! To pre-register for the 2012 Annual Meeting, complete the form on the following page and return it, with your check or money order for payment in full to incoming MWERA Executive Officer Gordon Brooks.

**Pre-registrations must be postmarked by October 7, 2012 to qualify for the reduced rates.** On-site registration will be available at the registration desk on the 9th floor (foyer area) of the Hilton Orrington Hotel beginning at 12:00 PM on Wednesday, November 7 and continuing through 4:40 PM on Friday, November 9. November 7-10, 2012 is a busy time in Evanston. Hotel space could be tight for those who do not have confirmed reservations. Our conference hotel, the Hilton Orrington, is holding a block of rooms for MWERA attendees; however, they will only hold these rooms until October 7. To ensure that you have a place to stay, please make your reservations with the hotel early. The hotel must receive your reservations by October 7, 2012.

**Participants in the conference are strongly urged to register at the Hilton Orrington since this directly affects the amount that MWERA will owe the hotel.** Please help us keep our costs low so that we can continue to provide a high-quality conference.

LCD projectors and screens will be provided by MWERA. **However, as was stated in the call for proposals, presenters who need additional audio/visual equipment, such as a laptop computer, are responsible for providing their own equipment or for arranging to rent these from the hotel at the presenter's own expense.** The hotel has a wide variety of A/V equipment for rent. Contact the hotel directly well before the meeting for your needs, rental pricing, availability, and payment.

**MWERA 2012 Conference Registration Form: November 7-10, 2012**  
 Hilton Orrington Hotel, Evanston, IL

Your Name: \_\_\_\_\_  
 (First Name) (Middle Initial) (Last Name)

How would you like your name to appear on your nametag? \_\_\_\_\_

What is your work affiliation? (If a graduate student, indicate the university you are attending): \_\_\_\_\_

Mailing Address: \_\_\_\_\_  
 (Street) (City) (State) (ZIP Code)

Your e-mail address: \_\_\_\_\_

Cell phone/personal phone: \_\_\_\_\_ Office phone : \_\_\_\_\_

Which MWERA divisions do you want to be listed with? Circle: A B C D E F G H I J K L

Is this your first MWERA conference?  Yes  No

If you are a graduate student, please tell us the name of the professor who told you about MWERA: \_\_\_\_\_

**Part One: Membership**

**To be eligible for reduced (member) conference registration rates, you must pay membership dues**

___ Regular member for one year (all presenters must be members)	\$60
___ Student member for one year	\$30
___ Retired professional membership for one year	\$30
___ Lifetime membership	\$600
___ Donation to MWERA	\$ _____

**Part Two: Conference Registration**

We need an accurate count for our luncheon, and to be able to tell our keynote luncheon speaker how many people will be in attendance. This year, because of the luncheon costs to MWERA, we need to know if you are coming to the luncheon. Luncheon fees are included as noted for each type of conference registration. Luncheon tickets may not be for sale at the conference. If you are coming to the lunch, please make sure to pre-register. If you want to bring someone else with you to the luncheon, please make sure you buy an additional ticket in advance.

	<b>Pre-Registered: Must be done on our website or mailed by 10/07/12</b>	<b>On-Site Registration: Must be done in person if not mailed by 10/07/12</b>
___ MWERA member: (all presenters must be members)		
Coming to Friday luncheon	\$144.00	\$184.00
___ MWERA member: No Friday luncheon	\$139.00	\$155.00
___ Non-Member/Non-presenter: With Friday luncheon	\$214.00	\$254.00
___ Non-Member/Non-presenter: No Friday luncheon	\$199.00	\$225.00
___ Student Member: With Friday luncheon	\$ 89.00	\$114.00
___ Student Member: No Friday luncheon	\$ 79.00	\$104.00
___ Lunch—Additional ticket for guest	\$ 40.00	\$ 50.00
___ Disk of abstracts	\$ 5.00	\$ 5.00

TOTAL AMOUNT ENCLOSED: \$ \_\_\_\_\_

1. If you are coming to the Friday luncheon, will you require a vegetarian menu?  Yes  No
2. Do you want to be added to a room-sharing list? (a list of people wishing to share will be emailed)  Yes  No
3. Pre-Registered Students: Are you interested in being a conference volunteer?  Yes  No

To use a credit card, please go to <http://www.mwera.org>, click on our store, and complete the information there.  
 To pay by check or money order, please mail to MWERA, c/o Sharon McNeely, PO Box 34421, Chicago, IL 60634

## Booking a Room at the Orrington

A block of rooms have been reserved for November 7, 2012 – November 10, 2012. The special room rate will be available until October 7, 2012 or until the group block is sold out, whichever comes first.

Booking a reservation from the Orrington site is easy. Go to [www.mwera.org](http://www.mwera.org) and click on the link for “Program Information” and then “Reserve Your Hotel Room.”



## *Directions to the Hilton Orrington*

**1710 Orrington Ave.  
Evanston, IL 60201  
Phone: 847-866-8700**

**<http://www.hotelorrington.com/directions.html>**

### **Driving Directions:**

#### **From Chicago:**

North on Lake Shore Drive to its end at Hollywood. Right onto Sheridan Road. Continue north into Evanston. (There are many turns. Watch for Sheridan Road signs). Left on Dempster Street to Chicago Avenue. Right on Chicago; four blocks to Davis Street. Left on Davis. One block to Orrington Avenue. Right on Orrington. 1-1/2 blocks to Hilton Orrington/Evanston on left.

#### **From Milwaukee and North:**

Take I-94 East to Dempster - EAST exit. Dempster into Evanston. Turn left on McCormick Blvd and right on Church Street. The Hilton is on the corner of Church Street and Orrington Avenue. The main entrance is on Orrington Avenue.

#### **From St. Louis and South:**

Take I-55 North to I -294 North to US 14 East to Dempster. Dempster into Evanston. Turn left on Dodge St. and right on Church Street. The Hilton is on the corner of Church Street and Orrington Avenue. The main entrance is on Orrington Avenue.

#### **From Cleveland and East:**

Take I-94 West to Dempster – exit 37B. Dempster into Evanston. Turn left on Dodge St. and right on Church Street. The Hilton is on the corner of Church Street and Orrington Avenue. The main entrance is on Orrington Avenue.

#### **From Iowa and West:**

Take I-88 East to I- 294 North to US 14 East to Dempster. Dempster into Evanston. Turn left on Dodge St. and right on Church Street. The Hilton is on the corner of Church Street and Orrington Avenue. The main entrance is on Orrington Avenue.

### **Airport Driving Directions:**

#### **From O'Hare International Airport:**

From Arrivals Terminal, follow signs "To Chicago". Exit at I-294 North. Exit at Dempster East and continue east on Dempster approximately 15-20 minutes into Evanston. Turn left on McCormick Blvd, take McCormick to Church St and turn right onto Church St. Take Church to Orrington and turn left on Orrington. The Hilton is on the corner of Church & Orrington with the entrance on Orrington Avenue.

#### **To O'Hare International Airport:**

Start out going North on Orrington Ave toward Clark St. Turn Right onto Clark St. Turn Right onto Chicago Ave. Turn Right onto Dempster St. Merge onto I-94 E/ Edens Expy East toward Chicago. Take the Wilson Ave exit, Exit 43A. Turn Right onto W Wilson Ave. Turn Right onto N Cicero Ave/ IL-50. Turn Left onto W Lawrence Ave. Merge onto I-90 W/ Kennedy Expy W. Keep Right to take I-190 W via EXIT 78 toward I-294 S/ Indiana/ O'HARE. Turn Slight Left toward Arrival Terminals. End at 10000 Bessie Coleman Dr Chicago, IL 60666.

**From Midway International Airport:**

Start out going South on S Cicero Ave/IL-50 S toward W 59th St. Make a U-Turn at W 59th St. onto IL-50 N/S Cicero Ave. Merge onto I-55 N/Stevenson Expy N. Merge onto I-94 W via Exit 292A. Merge onto Dempster St. via Exit 37B. Turn Left onto Dodge Ave. Turn Right onto Church St. Turn Left onto Orrington Ave. The Hilton is on the corner of Church & Orrington with the entrance on Orrington Avenue.

**To Midway International Airport:**

Start out going North on Orrington Ave toward Clark St. Turn Right onto Clark St. Turn Right onto Chicago Ave. Turn Right onto Dempster St. Merge onto I-94 E toward Chicago. Merge onto I-55 S/Stevenson Expy S via Exit 53 toward St Louis. Take the Cicero Ave/ IL-50 exit, Exit 286, toward Chicago Midway Airport. Turn Left onto IL-50 S/ S Cicero Ave. End at 5700 S Cicero Ave.

**Public Transportation:****CTA:**

Elevated Rapid Transit Train (the "EL") purple line to Davis Street. Three blocks east to Hilton Orrington/Evanston. NOTE: The "Evanston Express" Purple line runs from the Chicago Loop during weekdays at rush hours. At non-rush hour times, take the Red line north to Howard Street. Transfer to the Purple line (same platform).

**METRA Commuter Railroad:**

North Line from Northwestern Station to Davis Street. 3 1/2 blocks east to Hilton Orrington/Evanston. NOTE: If arriving in Chicago via Amtrak. Disembark at Union Station. Exit Union Station and cross street to Northwestern Station.

**Airport Transportation:****Continental Airport Express:**

Shared van service departs O'Hare every 10-15 minutes between 6:00 AM and 11:00 PM. Upon arrival at O'Hare, see ticket agents in baggage claim areas 1E and 3E and ask for a suburban shuttle. Cost is approximately \$31.00 per person and \$54.00 round trip (2nd and 3rd passengers are \$8.00 per person one way). They require a one day advance notice for return trips to O'Hare. Go to <https://airportexpress.hudsonltd.net/res?USERIDENTRY=OHE&LOGON=GO> to make a reservation or call 1-800-284-3826 and use the hotel code "OHE".

**303 TAXI:**

303 Taxis honor special flat rates from the airports to/from the Hilton Orrington less an additional \$2.00 discount by stating the account number, #4097. Should you wish to order a taxi from/to either Chicago O'Hare or Midway Airport please call 303 Taxi at 1-847-256-8294 and give the account number #4097 (Hilton Orrington Evanston) to make your reservation. Evanston rates are currently \$30-\$32 from O'Hare and \$51-\$53 from Midway. Should you be arriving at the airport with or without a reservation, call 303 for pickup upon gathering your luggage at 1-847-256-8294 account #4097 and the dispatcher will give you instructions how to meet your taxi. [www.taxiwithus.com](http://www.taxiwithus.com)

**Public Parking Garages in Evanston:** <http://www.cityofevanston.org/parking/lots-garages/>



## *Chronological Listing of Sessions*

**Wednesday, November 7, 2012**

**W.0200.BO Laughing and Learning: An Alternative to Shut up and Listen**

C - Learning and Instruction --- Workshop  
Wednesday, 2:00 PM to 3:55 PM --- Bonbright

Presenter Peter Mark Jonas, *Cardinal Stritch University*

**ABSTRACT**

*A variety of theoretical and empirical studies show that individuals can use humor not only to increase learning comprehension, but also to enhance the learning environment. This workshop offers an analysis of the research focusing on the benefits of using humor as a teaching tool. By grounding the work in empirical studies, the interactive workshop provides a theoretical model and current active processing to connect practical examples demonstrating eight ways to use humor to enhance the learning environment. Through the use of effective research and brain-based concepts, the workshop will integrate theory with very practical advice in the form of easy to follow research-based guidelines. Learn how easy it is to use various forms of humor to improve teaching, increase learning, and enhance the educational environment.*

**W.0200.CU No Assembly Required: Methods and Materials for P-Project Policy Work**

K - Teaching and Teacher Education --- Workshop  
Wednesday, 2:00 PM to 3:55 PM --- Cummings

Presenters Pamela Konkol, *Concordia University Chicago*; Erica Meiners, *Northeastern Illinois University*; Isabel Nunez, *Concordia University Chicago*; Therese Quinn, *School of the Art Institute of Chicago*

**ABSTRACT**

*Six years ago, the Pre-Professional Preparation Project was born out of an initial, quasi-formal assessment of LGBTQ presence in teacher preparation programs. Since then, we have expanded our assessment to include more programs, have engaged in three biennial phases of data collection, begun curricular and professional development projects, and have reported our findings in a variety of venues. In response to numerous requests, we have set-up a P-Project shop in other states. This workshop will provide an opportunity for participants to engage with the P-Project team, gather resources and implementation guides, and formulate a plan of action to take home and commence.*

The *Mid-Western Educational Researcher* is a scholarly journal that publishes research-based articles addressing a full range of educational issues. The journal also publishes literature reviews, theoretical, and methodological discussions that make original contributions to the research literature and feature columns.

Submit manuscripts or obtain a complete version of the Call for Manuscripts by contacting the Editors at [mwera@uakron.edu](mailto:mwera@uakron.edu)

**W.0400.BO Using Microsoft® Excel to Analyze Survey Data**  
D - Measurement and Research Methodology --- Workshop  
Wednesday, 4:00 PM to 5:55 PM --- Bonbright  
Presenter Beverly J. Dretzke, *University of Minnesota*

**ABSTRACT**

*In this workshop, the participants will learn how to use the features of Microsoft® Excel to analyze survey data. The workshop will provide hands-on experience carrying out several analyses on sample data sets. Topics to be addressed include constructing frequency distributions using PivotTable; collapsing response codes (e.g., from a 4-point satisfaction scale to a 2-point scale); assigning verbal labels to numerical codes; cross tabulating two variables using Pivot Table; creating a template to calculate a chi-square test of independence; using the Analysis Toolpak to obtain descriptive statistics; carrying out an independent samples t-test; and constructing a correlation matrix. **Participants should bring a laptop computer to the workshop that has the 2007 or 2010 version of Microsoft® Excel.***

**W.0400.CU Using Short, Humorous Videos (and research) to Enhance Teaching**  
K - Teaching and Teacher Education --- Workshop  
Wednesday, 4:00 PM to 5:55 PM --- Cummings  
Presenter Peter Mark Jonas, *Cardinal Stritch University*

**ABSTRACT**

*The background, character, and learning styles of our students are drastically changing. Consequently, the teaching techniques needed to address these changes are also varying. In addition, technology has taken on its own life in education as schools try to address the new knowledge, skills, and dispositions necessary for the 21st century. This workshop will explain the research and practice of using technology in the form of short videos as a main component of the learning process. This new teaching style is called videagogy = video + pedagogy.*

**W.0600.BO An Introduction to R: The Basics**  
D - Measurement and Research Methodology --- Workshop  
Wednesday, 6:00 PM to 7:55 PM --- Bonbright

Presenters *Leslie Vanessa Rosales de Veliz, Ohio University; Shannon David, Ohio University; Danielle McElhiney, Ohio University; Marsha Lewis, Ohio University; Emily Price, Ohio University, Salvador Castro, Ohio University, Moira Ragan, Ohio University, Elizabeth Smith, Ohio University, Gordon Brooks, Ohio University*

**ABSTRACT**

*The primary purpose of this workshop is to introduce a free and powerful software package, R, and to prepare workshop participants to use R for research and applied statistics. In particular, the workshop will be divided into three main parts: (a) data management in R, (b) descriptive statistics in R, and (c) basic and intermediate statistical analyses in R. The workshop will assume no previous knowledge of R. **Participants should bring their own computers either with R installed or a CD-ROM drive (a CD will be provided during the workshop from which R can be run).** The R installation program can be downloaded at <http://cran.case.edu/> or other mirror sites available via the CRAN link at <http://www.r-project.org/>. Note: we also recommend that R-Commander, called Rcmdr, be installed and loaded prior to the workshop. Handouts will be provided during the workshop.*

**W.0600.CU Design Literacy for Non-Designers: Experience the Fundamentals of Design Practice to Enhance Curriculum Development and Content Delivery**  
K - Teaching and Teacher Education --- Workshop  
Wednesday, 6:00 PM to 7:55 PM --- Cummings

**ABSTRACT**

Design Literacy for Non-Designers: Experience the Fundamentals of Design Practice to Enhance Curriculum Development and Content Delivery. *Robyn Richardson, Savannah College of Art and Design*

**ABSTRACT**

*The goal of this workshop is to teach fundamental design literacy. Just as we learned the fundamentals of mathematics and language in early schooling, the basics of design can be taught to and be beneficial for non-designers. Mathematics and language literacy are not reserved for an advanced level of educational achievement, but are basic tools for developing the ability to learn a system. Design literacy, like mathematics and language, begins by learning and then applying basic system elements in practice. Though this session will not create expert designers, one need not be a degreed mathematician to solve basic math problems. The idea is to provide basic design literacy to participants so that they can better "read" and "write" design systems in their own lives and begin to reflect upon and enhance curricular development through the lens of design principles and practices.*

## Thursday, November 8, 2012

**T.0800.MU Navigating Parenting: Big Challenges in Schools**  
A - Administration, Organization, & Leadership --- Symposium  
Thursday, 8:00 AM to 9:20 AM --- Mulford

Presenter *Terrence Malone, The Summit Country Day School*  
Chair *Linda Fraser Jacobsen, University of Missouri-St. Louis*

### ABSTRACT

*This symposium will investigate the impact of parenting trends on a private, PK-12 school. Focus group interviews with 16 educators were used to examine the perceived effects of parenting on teachers, students, and the institution. Survey results from two additional PK-12 schools examined the perception of educators on parenting tendencies. This study challenges the phenomenon of "over-parenting," and the notion that there is a growing trend in schools where parents too quickly and too often intervene on behalf of their children.*

**T.0800.CU Innovative Approaches to Literacy Curriculum**  
B - Curriculum Studies --- Paper Session  
Thursday, 8:00 AM to 9:20 AM --- Cummings

### PRESENTATIONS

- Developing Symbolic Interpretation through Literary Argumentation *Teresa Sosa, University of Illinois-Chicago; Allison Hall, University of Illinois-Chicago, Susan R. Goldman, University of Illinois-Chicago, Carol D. Lee, Northwestern University*
- ESL Teachers' and Students' Attitudes, Perceptions, and Experiences with Arts for Learning Projects *Maria Angelova, Cleveland State University; Lee Wilberschied, Cleveland State University*
- Teacher and Student Perceptions of Group Instruction and Collaboration in the Anna Plan Program *Dimana Spudich, Saint Louis University; Christine Spudich, Saint Louis University*

Chair *Spencer Pasero, Fermilab Education Office*  
Discussant *Jonnie Jill Phipps, The University of Akron*

**T.0800.HO Teaching and Learning - Research in Progress**  
C - Learning and Instruction --- Research in Progress Session  
Thursday, 8:00 AM to 9:20 AM --- Holgate

### PRESENTATIONS

- Moral Education through Reader-Response Theory *Christopher Meidl, Saint Norbert College; Tynisha Meidl, Saint Norbert College; Emily Gardner, Saint Norbert College; Maggie Hogan, Saint Norbert College; Maeve Holahan, Saint Norbert College*
- Peaceful Argumentation Applied to Literacy Instruction in the Elementary Classroom *Joseph Earl Schroer, Purdue University-North Central*
- The Use of Music Integration in Second Language (L2) Instruction *YeonHee Chae, Indiana State University*
- Understanding and Encouraging Academic and Non-Academic Reading in Male High School Students *Michael John Payne, Wright State University*

Chair *Joseph Earl Schroer, Purdue University-North Central*  
Discussant *Gary Daytner, Western Illinois University*

**T.0800.HA Changing the Context for Students with Disabilities**  
E - Counseling & Human Development --- Paper Session  
Thursday, 8:00 AM to 9:20 AM --- Haven

### PRESENTATIONS

- Advocacy, Coping, and Family Dynamics for Mothers with a Child with Asperger's Syndrome *John L Rausch, John Carroll University; Alicia Pascoe, John Carroll University*
- Using a Training Module to Change Attitudes of Students toward Capabilities of Persons with Disabilities *Seth Amponsah Kwarteng, University of Cape Coast-Ghana*

Chair *Hyeyoung Bang, Bowling Green State University*  
Discussant *Nicole Ruth Rivera, North Central College/Northern Illinois University*

**T.0800.JA      Research in Higher Education**  
I - Education in the Professions --- Paper Session  
Thursday, 8:00 AM to 9:20 AM --- James

PRESENTATIONS

- African-American Faculty Job Satisfaction in the Academy *Mohamed A. Nur-Awaleh*, Illinois State University; *Tuwana T. Wingfield*, Illinois State University
- Evaluating the Systematic Validity of a Medical Subspecialty Examination *Mikaela Raddatz*, University of Kentucky; *Kenneth D. Royal*, American Board of Family Medicine; *Jessica Pennington*, University of Kentucky
- An Oral History of the Influence of Shirley K. Morgenthaler's Wisdom and Works on Early Childhood Education *Lauren Wellen*, Concordia University-Chicago

Chair            Anne George, *Saint Xavier University*  
Discussant     Penny Soboleski, *Bowling Green State University*

**T.0800.RO      Exploring the Use of Structured Academic Supports**  
J - Postsecondary Education --- Paper Session  
Thursday, 8:00 AM to 9:20 AM --- Rogers

PRESENTATIONS

- Predicting Academic Success in Tertiary Education: Exploring the Impact of Academic Support Programming. *Edward J. Magiste*, Cleveland State University; *Regina Giraldo-Garcia*, Cleveland State University
- Studying the Impact of Structured Learning Assistance on English Language Learners *Edward J. Magiste*, Cleveland State University; *Christine Vodicka*, Cleveland State University; *Abdullah Alghatani*, Cleveland State University

Chair            Katrina Daytner, *Western Illinois University*  
Discussant     Tom Cody, *Western Illinois University*

**T.0930.HI      Presidential Keynote Address**  
MWERA Annual Meeting --- Alternative Session  
Thursday, 9:30 AM to 10:30 AM --- Hinman Auditorium

PRESENTATION

Presenter      *Cynthia Campbell*, Northern Illinois University  
Chair            *David A. Walker*, Northern Illinois University

ABSTRACT

**Dr. Cynthia Campbell**  
*Northern Illinois University*

“MWERA: Looking Back 35 Years”

*In honor of the Mid-Western Educational Research Association's 35th year as an organization, current President, Cynthia Campbell, will present her content review of MWERA's archived conference programs that reveal a rich and cutting edge history of era-based research initiatives.*



**T.1040.HI      Follow-Up Discussion from the Presidential Keynote Address**  
MWERA Annual Meeting --- Special Event  
Thursday, 10:40 AM to 12:00 PM --- Hinman Auditorium

PRESENTATION

Attendees      *Gordon Brooks*, Ohio University; *Doug Feldmann*, Northern Kentucky University; *Janet K Holt*, Southern Illinois University-Edwardsville; *Craig Mertler*, Lynn University; *Will Place*, University of Dayton; *Sharon A. Valente*, University of St. Thomas-Houston

Chair            *David A. Walker*, Northern Illinois University

ABSTRACT

*As a follow-up, Dr. Campbell will moderate a past Presidents' panel. Former MWERA presidents will return to share their unique experiences and engage in conversation about the future of the organization.*

**T.1040.CU Exploring Contexts, Techniques, and Interventions for College Student Success**

E - Counseling & Human Development --- Paper Session

Thursday, 10:40 AM to 12:00 PM --- Cummings

PRESENTATIONS

- Effects of a Relaxation Training Technique in Helping College Students Succeed in Academic Field *Xi Zhao*, Miami University
- Evaluation of the Conditioned Emotion Intervention Technique: A Study of Chinese College Students with English Learning Anxiety *Weili Jin*, Miami University; *Aimin Wang*, Miami University
- Exploring the Influence of Individual Context on the Transition into College Culture *Nicole Ruth Rivera*, North Central College/ Northern Illinois University
- Role of Shyness in PIU among Undergraduate Students from China and America *Xiaowei Zhang*, Miami University; *Zhen Ren*, Miami University; *Aimin Wang*, Miami University

Chair *Angeline Stuckey*, *State University of New York-Oswego*  
Discussant *Tom Cody*, *Western Illinois University*

**T.1040.HO Studies of Identity and Self-Efficacy**

G - Social Context of Education --- Paper Session

Thursday, 10:40 AM to 12:00 PM --- Holgate

PRESENTATIONS

- Academically Gifted Adolescents Transferring to an Independent Gifted School: Effects on Academic Identity *Vanessa Anne Lancaster*, Eastern Michigan University
- Layers of Inquiry, Identity, and Change: A Study of K-8 Transition into High School *Anne Galletta*, Cleveland State University; *Jacqueline Lamb*, Cleveland State University; *Regina Giraldo-Garcia*, Cleveland State University; *Keelan Quinn*, Cleveland State University; *Tiffany R. Williams*, Cleveland State University; *Luyen T. Thai*, Texas A & M University
- School-Based and Home-Based Identities of a Latina 5th Grade Student: Conflicting Versions of Self. *Simeon Stumme*, Concordia University-Chicago

Chair *Xiaodan Huang*, *Shawnee State University*  
Discussant *Xiaodan Huang*, *Shawnee State University*

**T.1040.HA Understanding and Promoting the Development of Undergraduate Learners**

J - Postsecondary Education --- Research in Progress Session

Thursday, 10:40 AM to 12:00 PM --- Haven

PRESENTATIONS

- Phenomenology Exploring the Twin Relationship and Student Development among Twins in College Together *Dimana Spudich*, Saint Louis University
- Phenomenology of Twins' Same Careers: Exploring Influences of Adult Twins' Relationship on Their Same Careers *Christine Spudich*, Saint Louis University
- Difficult Conversations: One University Tackles Difference Through Small Group Discussion *Debra Miretzky*, Western Illinois University; *Sharon Stevens*, Western Illinois University

Chair *Katrina Daytner*, *Western Illinois University*  
Discussant *Katrina Daytner*, *Western Illinois University*

**T.1040.JA Challenging Misconceptions at the Onset of Teacher Preparation Programs**

K - Teaching and Teacher Education --- Paper Session

Thursday, 10:40 AM to 12:00 PM --- James

PRESENTATIONS

- An Analysis of University Student Academic Self-Entitlement: Levels of Entitlement, Academic Year, and Gender  
*Tiffany B. Hartman*, Eastern Michigan University; *Patricia A. Pokay*, Eastern Michigan University
- Exploring Preservice Teachers' Attitudes Toward Content Area Literacy Requirement in Teacher Preparation Programs: An Application of Bolman and Deal's (2008) Four Frames  
*Florence Eniye Omachonu*, University of Wisconsin-Platteville
- Investigating Prospective Teachers' Knowledge of Scientific Theories and the Nature of Science  
*Patrick L Brown*, Fort Zumwalt School District; *James Concannon*, Westminster College

Chair Amy Allen, *The University of Toledo*

Discussant Penny Soboleski, *Bowling Green State University*

**T.1040.RO Education Policy and Issues in Finance**

L - Educational Policy and Politics --- Paper Session

Thursday, 10:40 AM to 12:00 PM --- Rogers

PRESENTATIONS

- Merit Pay: Examples of Fair Evaluation and Equitable Compensation  
*Tony Durr*, Augustana College; *Stephanie Johnson*, Augustana College
- The Relationship between Components of the Ohio Local District Report Card and the Outcome of a School Tax Levy.  
*Vicki Wheatley*, Ashland University
- A Critical Analysis of Football Bowl Subdivision Coaching Contract Components  
*Justin K. Nichols*, University of Kentucky

Chair Spencer Pasero, *Fermilab Education Office*

Discussant Ting Li, *Miami University*

**T.1200.GL MWERA Association Council Meeting**

MWERA Annual Meeting --- Alternative Session

Thursday, 12:00 PM to 1:30 PM --- Globe Private Dining Room

Chair Cynthia Campbell, *Northern Illinois University*

Attendees Kelly Bradley, *University of Kentucky*; Gordon Brooks, *Ohio University*; Tom Cody, *Western Illinois University*; Jessica Cunningham, *Georgetown College*; Dustin Derby, *Palmer College of Chiropractic*; Beverly J. Dretzke, *University of Minnesota*; Doug Feldmann, *Northern Kentucky University*; Francis Ebenezer Godwyll, *Ohio University*; Eric Mansfield, *Western Illinois University*; Cornelius McKenna, *Kishwaukee College*; Sharon McNeely, *Argosy University*; Greg Montalvo, *Western Illinois University*; David Newman, *Florida Atlantic University*; James Olive, *Ashland University*; Jonnie Jill Phipps, *The University of Akron*; Thomas J. Smith, *Northern Illinois University*; Angeline Stuckey, *State University of New York - Oswego*; Bridget Stuckey-Danner, *Olive-Harvey College*; Brandelyn Tosolt, *Northern Kentucky University*; Sharon A. Valente, *University of St. Thomas-Houston*; David A. Walker, *Northern Illinois University*; Aimin Wang, *Miami University*; Judith Zimmerman, *Bowling Green State University*

ABSTRACT

*All current MWERA Association Council members and MWERA officers should attend. Lunch will be served.*

**T.0140.HA New Member and New Student Member Welcome**

MWERA Annual Meeting --- Special Event

Thursday, 1:40 PM to 3:00 PM --- Haven

Chair Thomas J. Smith, *Northern Illinois University*

ABSTRACT

*All new and existing MWERA members and student members are invited to attend this welcome session. Come and meet each other and find out what MWERA collegiality is all about!*

**T.0140.CU Engagement and Achievement**  
C - Learning and Instruction --- Paper Session  
Thursday, 1:40 PM to 3:00 PM --- Cummings

PRESENTATIONS

- Five Shows a Day Five Days a Week: Humor and Engagement in High School Science *Diana Janet Zaleski*, Northern Illinois University; *Elena Lyutykh*, Concordia University-Chicago
- The Influence of Momentary Classroom Goal Structures and Instructional Practices in High School Science *Diana Janet Zaleski*, Northern Illinois University
- Effect of the Use of Smart Boards on Students' Interaction in Learning Mathematical Concepts *Doaa Hazem*, American University in Cairo
- Understanding Predictors and Correlates of Mathematics Achievement Levels: A Discriminant Function Analysis Approach *John K. Rugutt*, Illinois State University; *Caroline C. Chemosit*, Illinois State University; *Guy Joseph Banicki*, Illinois State University

Chair Karen Brown, *Nazareth Academy*  
Discussant Witriani Soegijardjo, *University of Missouri-Columbia*

**T.0140.HO Innovative Education Methodology**  
D - Measurement and Research Methodology --- Paper Session  
Thursday, 1:40 PM to 3:00 PM --- Holgate

PRESENTATIONS

- The Effect of Standard Setting Judge Variance on Known Assessment Cut Scores Using Simulation Techniques *William James Trapp*, Riverside Publishing
- The Use of Mixed Methods Principles Incorporating Item Response Theory: An Alternative Item Development Perspective *Emily Price*, Ohio University; *Shannon David*, Ohio University; *John Hitchcock*, Ohio University
- Using Hierarchical Generalized Linear Modeling in Factorial Differential Item Functioning Analysis *Deyu Xu*, Ohio University; *Gordon Brooks*, Ohio University

Chair Kathryn Shirley Akers, *Kentucky Department of Education/ Kentucky P20 Data Collaborative*  
Discussant Kathryn Shirley Akers, *Kentucky Department of Education/ Kentucky P20 Data Collaborative*

**T.0140.JA Social and Moral Issues in Education**  
G - Social Context of Education --- Paper Session  
Thursday, 1:40 PM to 3:00 PM --- James

PRESENTATIONS

- Incorporation of the Empirically-Defined Notion of Morality to Current Moral Education *Yuki Hasebe*, Western Illinois University
- Prosocial Behavior Exhibited in Preschool-Aged Children through Nature-Based Activities *Ibrahim H. Acar*, University of Nebraska-Lincoln; *Julia Torquati*, University of Nebraska-Lincoln
- You Get What You Expect: The Role of Social Reproduction Theory in American and British Schooling *Margaret Schauer*, Cleveland State University; *Jesse Bach*, Cleveland State University; *Carly Evans*, Cleveland State University; *Carrie Love*, Cleveland State University
- Social Comparison and its Impacts on Academic Performance of American and Chinese Students *Wenshu Li*, Miami University; *Ding Huang*, Miami University; *Aimin Wang*, Miami University

Chair Xiaodan Huang, *Shawnee State University*  
Discussant Xiaodan Huang, *Shawnee State University*

**T.0140.RO Evaluation of Arts Integration Projects**  
H - Research, Evaluation, & Assessment in Schools --- Paper Session  
Thursday, 1:40 PM to 3:00 PM --- Rogers

PRESENTATIONS

- Integrating the Arts to Improve Student Learning *Debra Ingram*, University of Minnesota; *Cynthia Weiss*, Columbia College-Chicago
- How Practice and Evaluation Shape Each Other: An Example from an Arts Integration Project *Elizabeth Radzicki*, Columbia College-Chicago; *Beverly J. Dretzke*, University of Minnesota
- Summer School Partnerships of Literary Artists and Sixth-Grade Reading Teachers *Beverly J. Dretzke*, University of Minnesota; *Judy L. Meath*, University of Minnesota; *Susan R. Rickers*, University of Minnesota

Chair Ting Li, *Miami University*

Discussant Sharon A. Valente, *University of St. Thomas-Houston*

**T.0140.MU Implementing Pedagogical Changes to Improve Learning**

J - Postsecondary Education --- Paper Session  
Thursday, 1:40 PM to 3:00 PM --- Mulford

PRESENTATIONS

- Clinic Abroad: The Development and Pilot Assessment of a Co-Curricular Chiropractic Clinical Abroad Program *Dustin Derby*, Palmer College of Chiropractic; *Julie Schrad*, Palmer College of Chiropractic
- Engaging Diverse Learners: Measuring the Impact of Electronic Instructional Aides on Students' Appraisal of Course Outcomes *Dustin Derby*, Palmer College of Chiropractic
- Integrating the Research: Co-Teaching to Prepare Reading Specialists to be Specialists in Research *Amanda Mulcahy Maddocks*, Concordia University-Chicago; *Dara Soljaga*, Concordia University-Chicago

Chair Tracey Stuckey-Mickell, *The Ohio State University*

Discussant Gary Daytner, *Western Illinois University*

**T.0310.RO Shift Happens: What We Learn from Teacher Leaders**

A - Administration, Organization, & Leadership --- Symposium  
Thursday, 3:10 PM to 4:30 PM --- Rogers

Presenters *JoAnn Hohenbrink*, Ohio Dominican University; *Marlissa Stauffer*, Ohio Dominican University; *Ted Zigler*, Wright State University

Chair Ting Li, *Miami University*

ABSTRACT

*This Symposium will bring to light how the new Teacher Leader Endorsement in Ohio creates time and space to allow teachers to be a part of the continuation of a shift happening in education. One aspect we will discuss is how school teachers and university teachers learn to collaborate and influence one another. Another point of discussion will be how K-12 teachers and particular issues influence one another. The last part of the symposium will entail a conversation about how once in the 'shift', how compelling it is to stay there.*

**T.0310.CU Exploring Social Tolerance Through Survey Research Design and Factor Analysis**

D - Measurement and Research Methodology --- Research in Progress Session  
Thursday, 3:10 PM to 4:30 PM --- Cummings

PRESENTATIONS

- Differences in Social Tolerance Among College Undergraduates: An Exploratory Study *Christine Baker Mitton*, Cleveland State University; *Molly Nackley Schott*, Cleveland State University
- Instrument Piloting in a Cross-Cultural Context: Lessons Learned *Briju Thankachan*, Ohio University; *Emily Price*, Ohio University; *John Hitchcock*, Ohio University
- Validating an Instrument to Measure Understanding of LGBTQ Issues in Education *Brandelyn Tosolt*, Northern Kentucky University; *Timothy G. Larrabee*, Oakland University

Chair Beverly J. Dretzke, *University of Minnesota*

Discussant Beverly J. Dretzke, *University of Minnesota*



**T.0310.HO      Studies of Student Academic Achievement**  
G - Social Context of Education --- Paper Session  
Thursday, 3:10 PM to 4:30 PM --- Holgate

PRESENTATIONS

- Differences in Visual Mental Image Generated by Verbal Instruction between English and Chinese Native Speakers. *Han Han*, Miami University; *Aimin Wang*, Miami University
- The Influence of Class Humor on Students' Engagement, Students' Perception, and Students' Achievement *Lu Zhao*, Miami University
- The Seven Secrets of Successful Urban School Students: The Evidence Continues to Grow *Frederick M. Hampton*, Cleveland State University
- Welcoming Newcomers: How Non-Compulsory Tutoring Programs can Help ESL Students with Limited Formal Schooling Make Academic and Personal Gains *Sally A. Lamping*, Wright State University

Chair            Mohamed A. Nur-Awaleh, *Illinois State University*  
Discussant     Romena Marie Holbert, *Wright State University*

**T.0310.JA      Interventions for Improving Attendance and Cognitive Performance**  
H - Research, Evaluation, & Assessment in Schools --- Paper Session  
Thursday, 3:10 PM to 4:30 PM --- James

PRESENTATIONS

- After School Programs and Performance Scores *Ximena Burgin*, Northern Illinois University; *Alexis Ball*, Northern Illinois University
- Eighth Grade Algebra and Physical Science: Impact of Rigorous Curriculum in an Urban Setting *Christopher L. Broughton*, Cleveland Metropolitan School District; *Russell C. Brown*, Cleveland Metropolitan School District
- Staying Power: Assessing the Impact of the be@school Program on Student Attendance Behavior *Timothy D. Sheldon*, University of Minnesota

Chair            Spencer Pasero, *Fermilab Education Office*  
Discussant     Janet K. Holt, *Southern Illinois University-Edwardsville*

**T.0310.MU      Understanding Undergraduate Education at Private Universities**  
J - Postsecondary Education --- Paper Session  
Thursday, 3:10 PM to 4:30 PM --- Mulford

PRESENTATIONS

- Students of Color in a Small, Faith-Based University: Space, Micro-Aggressions, and Resistance. *Simeon Stumme*, Concordia University-Chicago; *Gregory Michie*, Concordia University-Chicago; *Laila McCloud*, Concordia University-Chicago; *Andrew Pollom*, Concordia University-Chicago
- The Global Perspective of Graduating Seniors at a Private Four-Year University *Lynda Leavitt*, Lindenwood University
- Undergraduate Conditional Admission as Related to Student Achievement in Higher Education *Joseph A. Parisi*, Lindenwood University; *Graham Weir*, Lindenwood University; *Sherrie Wisdom*, Lindenwood University

Chair            Sharon Stevens, *Western Illinois University*  
Discussant     Debra Miretzky, *Western Illinois University*

**T.0310.HA Effective Mentoring and Nurturing of Pre-Service Teachers: Addressing Preconceptions in the Early Childhood Classroom**

K - Teaching and Teacher Education --- Paper Session  
Thursday, 3:10 PM to 4:30 PM --- Haven

PRESENTATIONS

- A Transformative Space for Coaches of Early Care and Education Providers *Helene Arbouet Harte*, The University of Cincinnati, Blue Ash College; *Jaesook Gilbert*, Northern Kentucky University
- Developmentally Appropriate Practice and Religious/Spiritual Instruction –What do Preservice Teachers Believe? *Anne George*, Saint Xavier University
- The Effects of Continued Education on Preschool Teachers' Efficacy *Amy Allen*, The University of Toledo; *Ruslan Slutsky*, The University of Toledo; *Cynthia Richard*, The University of Toledo

Chair Michelle Cosmah, *University of Cincinnati*

Discussant Michelle Cosmah, *University of Cincinnati*

**T.0440.MU Examinations of School Achievement**

A - Administration, Organization, & Leadership --- Paper Session  
Thursday, 4:40 PM to 6:00 PM --- Mulford

PRESENTATIONS

- Principal Stability and Building Grade Span's Relationship to Ohio Elementary Achievement (2004 - 2011) *Thomas R. Cusack*, Cleveland State University
- Rapid Change: The Transformation of a Urban STEM High School in 90 Days *Eugene Sanders*, The Sanders Transformation Group, LLC; *Judy Jackson May*, Bowling Green State University; *Connie Hathorn*, Youngstown City Schools; *Diane Rollins*, Youngstown City Schools; *Jennifer Erin May*, The Sanders Transformation Group, LLC

Chair Carla Edlefsen, *Ashland University*

Discussant Mohamed A. Nur-Awaleh, *Illinois State University*

*Please note that Divisions will have their POSTER SESSIONS together at 4:40 PM in the Conference Center Foyer on the 9th floor*

**T.0440.CF Division B Posters**

B - Curriculum Studies --- Poster Session  
Thursday, 4:40 PM to 6:00 PM --- Conference Center Foyer

PRESENTATIONS

- How do You Get Them to Listen? Effective Communication in the Online Classroom *Nancy G. Saunders*, Indiana Wesleyan University
- A Study on Resiliency and Coping Strategies of International Students at a Midwestern University *Phoebe Fui-Yee Chin*, Southern Illinois University-Carbondale
- Criteria for Guiding and Evaluating the Use of Native American Folklore and Culture *Christopher Meidl*, Saint Norbert College; *Sarah Christensen*, Saint Norbert College; *Patty McConnell*, Saint Norbert College; *Katie Sixel*, Saint Norbert College; *Miranda Zygiel*, Saint Norbert College

**T.0440.CF Division G Poster**

G - Social Context of Education --- Poster Session  
Thursday, 4:40 PM to 6:00 PM --- Conference Center Foyer

PRESENTATIONS

- Fourth Grade Girls' Perceptions of Writing: Two Case Studies *Hannah Chai*, Wright State University

**T.0440.CF****Division J Poster**

J - Postsecondary Education --- Poster Session

Thursday, 4:40 PM to 6:00 PM --- Conference Center Foyer

## PRESENTATION

- Exploring Bullying in Doctoral Programs: Reducing Negative Peer Relationships *Keelan Quinn*, Cleveland State University; *Tiffany R. Williams*, Cleveland State University; *Brittan Davis*, Cleveland State University; *Sneha Pitre*, Cleveland State University; *Joshua Bagakas*, Cleveland State University

**T.0440.CF****Division K Poster**

K - Teaching and Teacher Education --- Poster Session

Thursday, 4:40 PM to 6:00 PM --- Conference Center Foyer

## PRESENTATION

- Educational Research for Teachers on Facebook *Tony Durr*, Augustana College

**T.0440.CF****Division L Posters**

L - Educational Policy and Politics --- Poster Session

Thursday, 4:40 PM to 6:00 PM --- Conference Center Foyer

## PRESENTATIONS

- SES Inequality and Achievement *Gregory J. Marchant*, Ball State University; *Sharon E. Paulson*, Ball State University
- The Effectiveness of Privatization in Maintaining Program Adherence in School Support Programs *Marlon Cummings*, University of Illinois-Chicago

**T.0440.JA****Real World Issues in Education Informed by Research Methodology**

D - Measurement and Research Methodology --- Paper Session

Thursday, 4:40 PM to 6:00 PM --- James

## PRESENTATIONS

- Earning the Right: Teaching and Learning Community-Based Ethnography *Laura Ruth Johnson*, Northern Illinois University; *Anne Almburg*, Founders Elementary School, DeKalb, IL; *Amy Brodeur*, University of St. Francis; *Nicole Ruth Rivera*, North Central College/ Northern Illinois University; *Colleen Stribling*, Elgin Community College
- Five Year Longitudinal RCT Impact Study of the Reading Growth on Low-Achieving Incarcerated Youth *William Loadman*, The Ohio State University
- Development of A Codebook for Examination of Program Evaluations that Uses Qualitative Techniques *Hongjing Liao*, Ohio University; *John Hitchcock*, Ohio University

Chair

Linda Fraser Jacobsen, *University of Missouri-St. Louis*

Discussant

Amanda Mulcahy Maddocks, *Concordia University-Chicago*

**T.0440.CU**      **Preparing Culturally Responsive Teachers**  
K - Teaching and Teacher Education --- Paper Session  
Thursday, 4:40 PM to 6:00 PM --- Cummings

PRESENTATIONS

- Technology in Mathematics and Science: Comparing Instructional Use in the United States and Asia (Taiwan) *Ervin F. Sparapani*, Saginaw Valley State University; *Patricia S. Calahan*, Saginaw Valley State University
- The Closing the Math Achievement Gap of Native American Students Identified as Learning Disabled *Judith Elaine Hanks*, University of Wisconsin-Oshkosh; *Skoning Stacey*, University of Wisconsin-Oshkosh; *Gerald Fast*, University of Wisconsin-Oshkosh
- Using Critical Self-Reflection and Resistance Strategies in Preparing Culturally Responsive Teachers *Winston E. Vaughan*, Xavier University

Chair                Xiaodan Huang, *Shawnee State University*  
Discussant        Greg Montalvo, *Western Illinois University*

**T.0440.HO**      **Division L Research in Progress**  
L - Educational Policy and Politics --- Research in Progress Session  
Thursday, 4:40 PM to 6:00 PM --- Holgate

PRESENTATIONS

- New Teachers, Same School: Students' Perspectives of School Turnaround *Jennifer D. Olson*, University of Illinois-Chicago
- Urban Early Childhood Educators' Perceptions of the Impact of NCLB on their Literacy Practices *Terry Husband*, Illinois State University

Chair                Francis Atuahene, *West Chester University of Pennsylvania*  
Discussant        Francis Atuahene, *West Chester University of Pennsylvania*

**T.0600.HB**      **President's Cracker Barrel Social**  
MWER Annual Meeting --- Special Event  
Thursday, 6:00 PM to 7:30 PM --- Heritage Ballroom

ABSTRACT

*Join us for some fun and fellowship! Hor d'oeuvres and a cash bar will be available while you enjoy the conversation with other members.*

*Please join us at the*

## **President's Cracker Barrel Social**

*Entertainment by: Tom Holland & the Shuffle Kings*

**6:00 – 7:30 PM in the Heritage Ballroom**

## Friday, November 9, 2012

### F.0800.HA Initiatives for Educational Improvement

A - Administration, Organization, & Leadership --- Paper Session

Friday, 8:00 AM to 9:20 AM --- Haven

#### PRESENTATIONS

- Examining the Use of Data for School Improvement in Ghana *Michael Amakyi*, Institute for Educational Planning Administration, University of Cape Coast-Ghana
- Portraits of Successful African Immigrant Faculty in U.S. Campuses *Zipporah Wanjira Abla*, Bowling Green State University
- Social Media and Marketing of Higher Education: A Review of the Literature *Josiah Zachary Nyangau*, Kent State University

Chair Susan J. Katz, *Roosevelt University*

Discussant Laura Clarke, *Ball State University*

### F.0800.NO An Introduction to R: Monte Carlo Simulation

D - Measurement and Research Methodology --- Workshop

Friday, 8:00 AM to 9:20 AM --- North Shore

Presenters *Emily Price*, Ohio University; *Marsha Lewis*, Ohio University; *Leslie Vanessa Rosales de Veliz*, Ohio University; *Danielle McElhiney*, Ohio university; *Shannon David*, Ohio University, *Gordon Brooks*, Ohio University

#### ABSTRACT

*The primary purpose of this workshop is to introduce a free and powerful software package, R, and to prepare workshop participants to use R in Monte Carlo simulations for methodological research. In particular, the workshop will be divided into three main parts: (a) data generation in R, (b) basic Monte Carlo programming (e.g., loops), and (c) running simulations (e.g., investigating Type I errors). The workshop assumes basic operational knowledge of R. **Participants should bring their own computers either with R installed or a CD-ROM drive (a CD will be provided during the workshop from which R can be run).** The R installation program can be downloaded at <http://cran.case.edu/> or other mirror sites available via the CRAN link at <http://www.r-project.org/>. Handouts will be provided during the workshop.*

### F.0800.CU Easing Transitions and Crises for Adolescents

E - Counseling & Human Development --- Paper Session

Friday, 8:00 AM to 9:20 AM --- Cummings

#### PRESENTATIONS

- Meaning-Making with Early Adolescents about Participatory Action Research and Transition into High School *Anne Galletta*, Cleveland State University; *Keelan Quinn*, Cleveland State University; *Tiffany R. Williams*, Cleveland State University
- Wisdom and Ego-Identity among Korean Adolescents *Hyeyoung Bang*, Bowling Green State University

Chair Wenshu Li, *Miami University*

Discussant Tracey Stuckey-Mickell, *The Ohio State University*

### F.0800.MU Ethnic Issues in School and Institution

G - Social Context of Education --- Research in Progress Session

Friday, 8:00 AM to 9:20 AM --- Mulford

#### PRESENTATIONS

- The Lived Experiences of Faculty of Color who Left a Predominantly White Institution *Brandelyn Tosolt*, Northern Kentucky University; *Willie Elliott*, Northern Kentucky University; *Brittanie Dudley*, Northern Kentucky University; *Jamilah Hackworth*, Northern Kentucky University; *Georgia Turner*, Northern Kentucky University
- The Whitestreaming of American Indian Students in Public Schools *Stephanie Masta Zywicki*, Iowa State University

Chair Hannah Chai, *Wright State University*

Discussant Hannah Chai, *Wright State University*

**F.0800.HO Promoting Student Success in Graduate Programs**

J - Postsecondary Education --- Paper Session

Friday, 8:00 AM to 9:20 AM --- Holgate

PRESENTATIONS

- Exploring Student Success in a Doctoral Program: The Power of Mentorship and Research Engagement *Joshua Bagakas*, Cleveland State University; *Natale N. Badillo*, Cleveland State University; *Irina Bransteter*, Cleveland State University; *Sarah Rispinto*, Cleveland State University
- Improving Student Retention in a Curriculum and Instruction Doctoral Program *Mary Beth Henning*, Northern Illinois University; *Elizabeth Wilkins*, Northern Illinois University

Chair Amanda Mulcahy Maddocks, *Concordia University-Chicago*

Discussant Greg Montalvo, *Western Illinois University*

**F.0800.JA Motivation and Support to Improve Instruction**

K - Teaching and Teacher Education --- Paper Session

Friday, 8:00 AM to 9:20 AM --- James

PRESENTATIONS

- Changes in a Writer's Identity: Reframing the Positionality of an Elementary School Writing Teacher *Mary Kate - Patterson*, The Ohio State University; *Adrian Rodgers*, The Ohio State University
- The Development of Pre-Service Teachers' Self-Efficacy Beliefs *Catherine L. Polydore*, Eastern Illinois University; *Stephen E. Lucas*, Eastern Illinois University
- The Importance of Physical Education in Today's Schools *Kenneth D. Brubaker, Jr.*, Ashland University
- The New Teacher Academy: Easing the Transition *Delane Bender-Slack*, Xavier University; *Teresa Young*, Xavier University

Chair Eric Mansfield, *Western Illinois University*

Discussant Sharon A. Valente, *University of St. Thomas-Houston*

**F.0800.RO Current Issues in Education Policy**

L - Educational Policy and Politics --- Paper Session

Friday, 8:00 AM to 9:20 AM --- Rogers

PRESENTATIONS

- The New Discourse of Otherness: A Postcolonial Analysis of the Media-Represented Chinese "Tiger Mom" *Ting Li*, Miami University
- Widening Access: An Examination of the Structures of Inequality and the Challenges Facing Public Universities in Ghana *Francis Atuahene*, West Chester University of Pennsylvania; *Anthony Owusu-Ansah*, Albany State University
- Thirty Years Since "A Nation at Risk": Educational Reform and the Transformation of Schools Reform *Eugene Sanders*, The Sanders Transformation Group, LLC; *Judy Jackson May*, Bowling Green State University

Chair Lynda Leavitt, *Lindenwood University*

Discussant Lynda Leavitt, *Lindenwood University*

**F.0930.JA MWERA Business Meeting**  
MWERA Annual Meeting --- Alternative Session  
Friday, 9:30 AM to 10:30 AM --- James  
Chair Cynthia Campbell, *Northern Illinois University*  
Attendees Kelly Bradley, *University of Kentucky*; Gordon Brooks, *Ohio University*; Tom Cody, *Western Illinois University*;  
Jessica Cunningham, *Georgetown College*; Dustin Derby, *Palmer College of Chiropractic*; Beverly J. Dretzke,  
*University of Minnesota*; Doug Feldmann, *Northern Kentucky University*; Francis Ebenezer Godwyll, *Ohio*  
*University*; Eric Mansfield, *Western Illinois University*; Cornelius McKenna, *Kishwaukee College*; Sharon  
McNeely, *Argosy University*; Greg Montalvo, *Western Illinois University*; David Newman, *Florida Atlantic*  
*University*; James Olive, *Ashland University*; Jonnie Jill Phipps, *The University of Akron*; Thomas J. Smith,  
*Northern Illinois University*; Angeline Stuckey, *State University of New York - Oswego*; Bridget Stuckey-  
Danner, *Olive-Harvey College*; Brandelyn Tosolt, *Northern Kentucky University*; Sharon A Valente, *University*  
*of St. Thomas-Houston*; David A. Walker, *Northern Illinois University*; Aimin Wang, *Miami University*; Judith  
Zimmerman, *Bowling Green State University*

**ABSTRACT**

*Nominations for next year's officers and other general business matters will be addressed. All current officers and Association Council members are expected to attend and all MWERA members are encouraged to attend.*

**F.1040.MU Division A Meeting**  
MWERA Annual Meeting --- Special Event  
Friday, 10:40 AM to 11:15 AM --- Mulford  
Chair Dustin Derby, *Palmer College of Chiropractic*

**ABSTRACT**

*All conference participants interested in Division A - Administration, Organization, and Leadership - are encouraged to participate in this session.*

**F.1040.NO Division C Meeting**  
MWERA Annual Meeting --- Special Event  
Friday, 10:40 AM to 11:15 AM --- North Shore  
Chair Marilyn Petty Glick, *Indiana University-Kokomo*

**ABSTRACT**

*All conference participants interested in Division C - Learning and Instruction - are encouraged to participate in this session.*

**F.1040.RO Division E Meeting**  
MWERA Annual Meeting --- Special Event  
Friday, 10:40 AM to 11:15 AM --- Rogers  
Chair Tracey Stuckey-Mickell, *The Ohio State University*

**ABSTRACT**

*All conference participants interested in Division E - Counseling and Human Development- are encouraged to participate in this session.*

**F.1040.HA Division F Meeting**  
MWERA Annual Meeting --- Special Event  
Friday, 11:20 AM to 11:55 AM --- Haven  
Chair Thomas Smith, *Northern Illinois University*

**ABSTRACT**

*All conference participants interested in Division F - History and Historiography - are encouraged to participate in this session.*

**F.1040.HO Division K Meeting**  
MWERA Annual Meeting --- Special Event  
Friday, 10:40 AM to 11:15 AM --- Holgate  
Chair Jonnie Jill Phipps, *The University of Akron*

**ABSTRACT**

*All conference participants interested in Division K - Teaching and Teacher Education - are encouraged to participate in this session.*

**F.1040.CU**                      **Division H Meeting**  
MWERA Annual Meeting --- Special Event  
Friday, 10:40 AM to 11:55 AM --- Cummings  
Presenter            Lorrie Beaumont, *Evergreene Research and Evaluation*  
Chair                 Janet K Holt, *Southern Illinois University-Edwardsville*

**ABSTRACT**

*All conference participants interested in Division H - Research, Evaluation, and Assessment in Schools - are encouraged to participate in this session. **Dr. Lorrie Beaumont, from Evergreene Research and Evaluation, will be the Division's featured speaker. The title of her presentation is: Audience Research in Informal Learning Institutions.***



**Dr. Lorrie Beaumont**

**F.1040.JA**                      **Division J Meeting**  
MWERA Annual Meeting --- Special Event  
Friday, 10:40 AM to 11:55 AM --- James  
Presenters            Debra Miretzky, *Western Illinois University*; Sharon Stevens, *Western Illinois University*  
Chair                 Katrina Daytner, *Western Illinois University*



**Dr. Debra Miretzky**



**Dr. Sharon Stevens**

**ABSTRACT**

*All conference participants interested in Division J - Postsecondary Education - are encouraged to participate in this session. **Dr. Sharon Stevens and Dr. Debra Miretzky from Western Illinois University will be the Division's featured speakers. The title of their presentation is: Constructing Difficult Conversations.***

**F.1120.HO**                      **Division B Meeting**  
MWERA Annual Meeting --- Special Event  
Friday, 11:20 AM to 11:55 AM --- Holgate  
Chair                 Sharon A. Valente, *University of St. Thomas-Houston*

**ABSTRACT**

*All conference participants interested in Division B - Curriculum Studies - are encouraged to participate in this session.*

**F.1120.RO**                      **Division D Meeting**  
MWERA Annual Meeting --- Special Event  
Friday, 11:20 AM to 11:55 AM --- Rogers  
Chair                 Kathryn Shirley Akers, *Kentucky Department of Education/ Kentucky P20 Data Collaborative*

**ABSTRACT**

*All conference participants interested in Division D - Measurement and Research Methodology- are encouraged to participate in this session.*



**F.1120.MU**      **Division G Meeting**  
MWERA Annual Meeting --- Special Event  
Friday, 11:20 AM to 11:55 AM --- Mulford  
Chair  
Xi Zhao, *Miami University*

ABSTRACT

*All conference participants interested in Division G - Social Context of Education - are encouraged to participate in this session.*

**F.1120.NO**      **Division I Meeting**  
MWERA Annual Meeting --- Special Event  
Friday, 11:20 AM to 11:55 AM --- North Shore  
Chairs  
Anne George, *Saint Xavier University*; Penny Soboleski, *Bowling Green State University*

ABSTRACT

*All conference participants interested in Division I - Education in the Professions - are encouraged to participate in this session.*

**F.1120.HA**      **Division L Meeting**  
MWERA Annual Meeting --- Special Event  
Friday, 11:20 AM to 11:55 AM --- Haven  
Chair  
Francis Ebenezer Godwyll, *Ohio University*

ABSTRACT

*All conference participants interested in Division L - Educational Policy and Politics - are encouraged to participate in this session.*

**F.1200.GR****Luncheon Keynote Address**

MWERA Annual Meeting --- Special Event  
 Friday, 12:00 PM to 1:30 PM --- Grand Ballroom  
 Presenter Larry V. Hedges, *Northwestern University*  
 Chair Cynthia Campbell, *Northern Illinois University*

Presenter

Chair

ABSTRACT

**Dr. Larry V. Hedges***Northwestern University***“The Crisis in Education Research Capacity”**

The education industry is a surprisingly large segment of the national economy. Yet, we have historically underinvested in systematic research on the functioning of education. This includes the development of basic data on students, schools, and classrooms. It also includes funding for the development of systems to make better use of the data that is collected. I argue that data limitations, profound as they may be, are not the limiting factor in what might be accomplished in improving education through research. Human capital poses an even more serious limitation. There are simply too few well trained education researchers to meet the demand of a serious attempt to reform American education. Although there has been recent progress in improving funding for both education research and research training, the capacity of American graduate schools is barely adequate to compensate for natural attrition. It could not accommodate the needed substantial expansion of the education research enterprise.

Larry V. Hedges is the Board of Trustees Professor of Statistics and Professor of Educational and Social Policy at Northwestern University. His research interests include the development of statistical methods for educational and social research, the use of statistical concepts in social and cognitive theory, the demography of talent and academic achievement, and educational policy analysis. Major areas of his methodological work include the development of statistical methods for combining evidence from multiple empirical research studies (meta-analysis) and the design and interpretation of social experiments. He is currently co-editor of the *Journal of Research on Educational Effectiveness*, was Editor of the *Journal of Educational and Behavioral Statistics*, was Quantitative Methods Editor of *Psychological Bulletin*, and served on the editorial boards of the *American Journal of Sociology*, the *Review of Educational Research*, and *Psychological Bulletin*. His books include *Statistical Methods for Meta-Analysis* (with Ingram Olkin) and *The Handbook of Research Synthesis and Meta-Analysis* (with Harris Cooper and Jeff Valentine) and *The Social Organization of Schooling* (with Barbara Schneider).

**F.0140.GR****Follow-Up Discussion from the Luncheon Keynote Address**

MWERA Annual Meeting --- Special Event  
 Friday, 1:40 PM to 3:00 PM --- Grand Ballroom  
 Presenter Larry V. Hedges, *Northwestern University*  
 Chair David A. Walker, *Northern Illinois University*

Presenter

Chair

ABSTRACT

*This follow-up session to Larry V. Hedges' Luncheon Keynote Address will provide participants an opportunity to pose questions and interact with Dr. Hedges.*

**F.0140.CU Innovative Curriculum in Early Childhood and Middle School**

B - Curriculum Studies --- Paper Session

Friday, 1:40 PM to 3:00 PM --- Cummings

PRESENTATIONS

- STEM Explore: A Summer Program for Middle School Students Engaging in STEM Activities and Careers *Kathleen Leslie Cripe*, Youngstown State University
- Teachers' Perspectives: Factors that Impact Implementation of Integrated Curriculum in K-3 Classrooms *Yao Fu*, Shawnee State University
- Integrating 21st Century Skills into the Curriculum *Areej Ahmed Ahmed*, Ohio University; *Dianne M. Gut*, Ohio University

Chair Sharon A. Valente, *University of St. Thomas-Houston*

Discussant Sharon A. Valente, *University of St. Thomas-Houston*

**F.0140.HA Student Learning and Creativity**

C - Learning and Instruction --- Paper Session

Friday, 1:40 PM to 3:00 PM --- Haven

PRESENTATIONS

- Investigating the Vocabulary Demands of the Textbook and Student Learning in Middle School Science *Patrick L. Brown*, Fort Zumwalt School District; *James Concannon*, Westminster College
- The Perception of Student Creativity and the Implementation of Constructivism in a University Setting *Lynda Leavitt*, Lindenwood University; *Chryssa Sharp*, Lindenwood University
- The Research (and Practice) Behind Using Humor to Improve Learning *Peter Mark Jonas*, Cardinal Stritch University

Chair Penny Soboleski, *Bowling Green State University*

Discussant Penny Soboleski, *Bowling Green State University*

**F.0140.JA Counseling Interventions to Enhance Student Well-Being and Success**

E - Counseling & Human Development --- Paper Session

Friday, 1:40 PM to 3:00 PM --- James

PRESENTATIONS

- Conditioned Emotional Intervention for a Middle School Student with Obsessive-Compulsive Disorder *Wenshu Li*, Miami University; *Han Han*, Miami University; *Xiaoqian Ding*, Liaoning Normal University; *Hongyuan Jin*, Liaoning Normal University; *Aimin Wang*, Miami University
- Technology and Shyness: Examining the Potential for a Counseling Approach *John L Rausch*, John Carroll University; *Katrice Cain*, John Carroll University; *Danielle Goldstein*, John Carroll University
- The Usage of Conditioned Emotional Intervention Technique in the Treatment of Panic Disorder: A Case Series *Han Han*, Miami University; *Wenshu Li*, Miami University; *He Zhang*, Liaoning Normal University; *Hongyuan Jin*, Liaoning Normal University; *Aimin Wang*, Miami University

Chair Tracey Stuckey-Mickell, *The Ohio State University*

Discussant Angeline Stuckey, *State University of New York-Oswego*

**F.0140.RO Education Changes World**

G - Social Context of Education --- Paper Session

Friday, 1:40 PM to 3:00 PM --- Rogers

PRESENTATIONS

- Borrowing Educational Practices to Confront Societal Dilemmas in the Unfinished Egyptian Revolution *Ana Gil-Garcia*, Northeastern Illinois University
- Educational Planning and Brain Drain in Africa in the Wake of Globalization *Francis Ebenezer Godwyll*, Ohio University

Chair Hanbing Yu, *Miami University*

Discussant Witriani Soegijardjo, *University of Missouri-Columbia*

**F.0140.HO Correlates of Cognitive Performance and Attitudes in Various Cultural Contexts**

H - Research, Evaluation, & Assessment in Schools --- Paper Session

Friday, 1:40 PM to 3:00 PM --- Holgate

PRESENTATIONS

- Reading Achievement Tests: Predicting Achievement and Language Growth for English Language Learners  
*Margaret Berrios-Brown*, Cleveland Metropolitan School District; *Russell C. Brown*, Cleveland Metropolitan School District
- School Context and Teacher Practices on Students' Mathematics Self-Efficacy in Kenya *Joshua Bagakas*, Cleveland State University
- Student Perceptions of Classroom Mathematics Activities: A Cross-Cultural Examination *Thomas J. Smith*, Northern Illinois University; *Wei-Chen Hung*, Northern Illinois University; *Cornelius McKenna*, Kishwaukee College

Chair Beverly J. Dretzke, *University of Minnesota*

Discussant Beverly J. Dretzke, *University of Minnesota*

**F.0310.NO Evidence, Attitudes, and Predictors of Leadership**

A - Administration, Organization, & Leadership --- Paper Session

Friday, 3:10 PM to 4:30 PM --- North Shore

PRESENTATIONS

- Attitudes of School Leadership in the Era of No Child Left Behind *Peggy Thurow*, Argosy University
- Coupling Changing Student Demographics with Evidence-Based Leadership Practices: Leading Hispanic Friendly Learning Organizations *Tod Allen Farmer*, Tarleton State University, Texas A&M University System
- Humility as a Predictor of Transformational Leadership: A Study of Teachers' Perceptions of Principals *Brenda Oyer*, Bowling Green State University

Chair Michelle Cosmah, *University of Cincinnati*

Discussant Ted Zigler, *Wright State University*

**F.0310.CU Supporting Students with Various Cultural Backgrounds to Succeed**

G - Social Context of Education --- Paper Session

Friday, 3:10 PM to 4:30 PM --- Cummings

PRESENTATIONS

- Care and Culture: Supporting Latino Success Through Teacher-Student Relationships *Amy Roberts*, Roosevelt University; *Alyson Lavigne*, Roosevelt University; *Tammy Oberg De La Garza*, Roosevelt University
- Cross-Cultural Adaptation of International College Students in the United States *Yikang Wang*, Miami University; *Aimin Wang*, Miami University
- The Power of Perception on Practice: A Cross-Cultural Comparison of Parental Involvement in Middle and Secondary School in the United States and Taiwan *Pamela Louise Ross McClain*, Saginaw Public School District; *Ervin Sparapani*, Saginaw Valley State University

Chair Yikang Wang, *Miami University*

Discussant Mohamed A. Nur-Awaleh, *Illinois State University*

**F.0310.HO Evaluation Research in Progress**

H - Research, Evaluation, & Assessment in Schools --- Research in Progress Session  
Friday, 3:10 PM to 4:30 PM --- Holgate

PRESENTATIONS

- Be an Artist with Your Words: Integrating Instruction in Language Arts and Visual Arts *Debra Ingram*, University of Minnesota; *Alice George*, Columbia College-Chicago
- Analyses for Improvement of Charter Schools *JongKoo Hong*, Ball State University
- Outcomes-Based Decision-Making with Some Data-Based Decision-Making: A Case Study of an Urban Elementary School Using Data *Leanne Kallemeyn*, Loyola University-Chicago
- Prevention of Indonesian Students' Academic Procrastination: A Preliminary Study *Asteria Devy Kumalasari*, Universitas Padjadjaran, Bandung, Indonesia; *Witriani Soegijardjo*, University of Missouri-Columbia

Chair Han Han, *Miami University*

Discussant Han Han, *Miami University*

**F.0310.JA The Impact of Institutional Climate**

J - Postsecondary Education --- Paper Session  
Friday, 3:10 PM to 4:30 PM --- James

PRESENTATIONS

- Assessing Institutional Climate via Mixed Methods in Higher Education: Administering the NILIE-PACE Climate Instrument at a Private University in Central China *Linda Fraser Jacobsen*, University of Missouri-St. Louis
- Year Two: University Transition from NAIA to NCAA D-II Sports Classification *Graham Weir*, Lindenwood University; *Sherrie Wisdom*, Lindenwood University
- Muslim Women on the Catholic Campus: How Muslim Female Students Experience Campus Life *Cynthia Shafer*, University of Dayton

Chair Tom Cody, *Western Illinois University*

Discussant Eric Mansfield, *Western Illinois University*

**F.0310.RO Perceptions of Teachers and Different Instructional Approaches as Seen by Others in the Educational Community**

K - Teaching and Teacher Education --- Paper Session  
Friday, 3:10 PM to 4:30 PM --- Rogers

PRESENTATIONS

- Andragogy for the iGeneration *Sherri Wynn*, Indiana Wesleyan University; *Tammy Mahon*, Indiana Wesleyan University
- Project Based Learning and Invitations: A Comparison *Cheu-jey Lee*, Indiana University-Purdue University Fort Wayne
- Trust me! I Can Read: Building from Strengths in the High School English Classroom *Sally A. Lamping*, Wright State University

Chair Jonnie Jill Phipps, *The University of Akron*

Discussant Jonnie Jill Phipps, *The University of Akron*

**F.0310.HA Teacher Induction: Professional Development for the Newbie**

K - Teaching and Teacher Education --- Paper Session

Friday, 3:10 PM to 4:30 PM --- Haven

PRESENTATIONS

- Acting, Dressing, and Thinking Like a Professional *Amy L Brady*, Ashland University; *Sandra Gallagher*, Ashland University
- Induction and Mentoring Programs: Levels of Student Teacher Understanding *Elizabeth Wilkins*, Northern Illinois University; *Jeanne Okrasinski*, Eastern Illinois University
- Learning from Those Who are Preparing to be Teacher Leaders *Ginny McCormack*, Ohio Dominican University; *Marlissa Stauffer*, Ohio Dominican University

Chair Rachel J. Eells, *Concordia University-Chicago*

Discussant Mary Beth Henning, *Northern Illinois University*

**F.0440.HO University Partnerships: What Does that Really Look Like?**

A - Administration, Organization, & Leadership --- Symposium

Friday, 4:40 PM to 6:00 PM --- Holgate

Presenters Ted Zigler, *Wright State University*; JoAnn Hohenbrink, *Ohio Dominican University*; Marlissa Stauffer, *Ohio Dominican University*

Chair Michelle Lee Ruble, *Douglas County School System*

ABSTRACT

*This symposium will discuss the need for partnerships, which has been brought about in Ohio by the Race to the Top initiative and the influx of for-profit preparation programs. The session will look at what a good partnership looks like, what it is, and how it works---based on the examination of four models being used already by the authors: partnership between the university and an early-college school; partnership between the educational leadership program and a large urban district; the partnership of a university and the local educational service center to develop a principal preparation program, and, finally, the partnership between multiple small universities and their principal preparation programs."*

**F.0440.HA Valedictorians and Delinquents: Can Movies Influence the Success, Failure, and Incarceration of Young American Adults?**

G - Social Context of Education --- Alternative Session

Friday, 4:40 PM to 6:00 PM --- Haven

Presenters Jesse Bach, *Cleveland State University*; Carly Evans, *Cleveland State University*; Carrie Love, *Cleveland State University*; Margaret Schauer, *Cleveland State University*

ABSTRACT

*Films relay culture on a massive level and, as such, may be directly responsible for increasing stereotype effect and poor self-efficacy among urban students. Racial minorities, urban residents, and individuals of lower socioeconomic status are often portrayed in a negative fashion within film; thus, negatively influencing students' overall self-concept. The teacher-practitioner, as directly responsible for the education and socialization of youth, has a responsibility to investigate varying practices and interventions to ensure that students envision themselves and their associated racial, ethnic, and socioeconomic group in a positive manner. Through readily available resources, the teacher-practitioner can counter the negative imager, as shown in film, increasing self-concept and self-efficacy while decreasing the stereotype effect of the student.*

**F.0440.JA Comparison of Various Approaches to Program Evaluation: K-12 School Programs**

H - Research, Evaluation, & Assessment in Schools --- Alternative Session

Friday, 4:40 PM to 6:00 PM --- James

Presenters Laura Parman, *Illinois Community District 300*; Caroline Ogunbodede, *Illinois Community District 300*; James B. Duggan, *Illinois Community District 130*; Kelly Howard, *Illinois Community School District 35*; Nicolas Wade, *Illinois Community School District 323*; Peter Post, *Trinity Christian College*; Margaret Stemler, *National Louis University*; Sharon McNeely, *Argosy University*

ABSTRACT

*This session will present four methods that were used to conduct partial program evaluations in various K-12 schools. The presenters will discuss the rationale for their methodological choices and the results obtained. Comparisons will be made of the limitations of each choice and suggestions made for considering what might be reasonable approaches for program evaluations based on the type of program and the needs of the researcher.*

**F.0440.CU Improving Instruction for College Readiness**

K - Teaching and Teacher Education --- Symposium

Friday, 4:40 PM to 6:00 PM --- Cummings

Presenters Carla Edlefson, *Ashland University*; Chad J. Clark, *Ashland University*; Julie K. Blevins, *Ashland University*; Monica Perry Hummons, *Ashland University*

**ABSTRACT**

*States are preparing to implement the new Common Core Curriculum, focused on the College and Career Readiness anchor standards. High percentages of college students need remediation, which adds to the rising cost of higher education. K-12 teachers must be aware of the need to focus instruction on the higher level/critical thinking skills needed for success in college. Teacher preparation and professional development programs can encourage teachers to take the necessary risks to improve their instruction of higher level processing skills. The purpose of this symposium is to (a) validate a need for more effective instructional practices to improve college readiness; (b) identify research-based strategies and interventions to enhance instruction; (c) describe supports necessary for teachers to take risks with new instructional practices; and (d) present examples from practice in urban, suburban, high performing, and low performing schools.*

**F.0440.RO Research in Progress in Teacher and Teacher Education**

K - Teaching and Teacher Education --- Research in Progress Session

Friday, 4:40 PM to 6:00 PM --- Rogers

**PRESENTATIONS**

- Applying the Expert-Performance Approach to Teaching *Leah Johnson*, Indiana University-Purdue University Fort Wayne
- Perceptions and Practices in Using Technology During Field Experience *Mary Susan Love*, University of Wisconsin-La Crosse
- Self-Appraisal in the Wisconsin Professional Development Model *Christopher Meidl*, Saint Norbert College; *Michelle Marie LaLuzerne*, Saint Norbert College; *Catherine Toniolo*, Saint Norbert College

Chair Romena Marie Holbert, *Wright State University*

Discussant Romena Marie Holbert, *Wright State University*

**F.0440.MU Mid-Western Educational Researcher Journal Reviewers' Session**

MWERA Annual Meeting --- Special Event

Friday, 4:40 PM to 6:00 PM --- Mulford

Chairs Susan N. Kushner Benson, *The University of Akron*; Kristin L. K. Koskey, *The University of Akron*; Xin Liang, *The University of Akron*; Jennifer Milam, *The University of Akron*; Sandra Spickard Prettyman, *The University of Akron*

**ABSTRACT**

*All current reviewers and those interested in reviewing for the MWER journal are welcome.*

**F.0520.NO MWERA Division Chair Meeting (Orientation and Conference Feedback)**

MWERA Annual Meeting --- Alternative Session

Friday, 5:20 PM to 6:00 PM --- North Shore

Co-Chairs David A. Walker, *Northern Illinois University*; Francis Ebenezer Godwyll, *Ohio University*

Attendees Kathryn Shirley Akers, *Kentucky Department of Education/ Kentucky P20 Data Collaborative*; Katrina Daytner, *Western Illinois University*; Dustin Derby, *Palmer College of Chiropractic*; Anne George, *Saint Xavier University*; Marilyn Petty Glick, *Indiana University-Kokomo*; Janet K Holt, *Southern Illinois University-Edwardsville*; Lynda Leavitt, *Lindenwood University*; Thomas J. Smith, *Northern Illinois University*; Penny Soboleski, *Bowling Green State University*; Tracey Stuckey-Mickell, *The Ohio State University*; Sharon A. Valente, *University of St. Thomas-Houston*; Xi Zhao, *Miami University*

**ABSTRACT**

*All CURRENT Division Chairs and Co-Chairs from the 2012 Conference and all NEW Division Chairs and Co-Chairs for the 2013 Conference should attend this session. This session will provide an orientation for new Division Chairs and will provide an opportunity for current Division Chairs to provide feedback that will be integrated into the 2013 conference planning. An overview will be given of the conference program development process and of issues with which all Division Chairs should be familiar as they begin their service. New Division Chairs should attend even if they have been a Division Chair before so that they can become familiar with the processes to be used in the MWERA 2013 annual program development.*

**F.0600.JA**      **Voices of Young Latina Mothers**  
MWERA Annual Meeting --- Special Event  
Friday, 6:00 PM to 7:30 PM --- James  
Chair              Laura Ruth Johnson, *Northern Illinois University*

**ABSTRACT**

*This session will share the voices and perspectives of young Latina mothers enrolled in Pedro Albizu Campos High School, an alternative high school serving the educational, cultural, and social needs of youth in the Humboldt Park area, a predominately Puerto Rican community located on Chicago's Near Northwest Side. The young women will discuss their experiences as young mothers and address some of the challenges they have faced as mothers and students. They will also describe some of the civic engagement projects and initiatives they have been involved with through their participation in the school.*

*Please join us at for a special community-based session*

**Voices of Young Latina Mothers**

**6:00 – 7:30 PM in the James Room**

*Saturday, November 10, 2012*

**S.0800.HB**      **MWERA Board of Directors' Meeting**  
MWERA Annual Meeting --- Business Meeting  
Saturday, 8:00 AM to 12:00 PM --- Harris Board Room  
Chair              Doug Feldmann, *Northern Kentucky University*  
Discussants      Mark Beasley, *University of Alabama-Birmingham*; Susan N. Kushner Benson, *The University of Akron*; Gordon Brooks, *Ohio University*; Cynthia Campbell, *Northern Illinois University*; Tom Cody, *Western Illinois University*; Francis Ebenezer Godwyll, *Ohio University*; Sharon McNeely, *Argosy University*; Tracey Stuckey-Mickell, *The Ohio State University*; Thomas J. Smith, *Northern Illinois University*; David A. Walker, *Northern Illinois University*

**ABSTRACT**

*Breakfast will be served at 8:00, with the meeting starting promptly at 8:15. All current and newly elected Board members are expected to attend the entire meeting.*

***Start Planning Now for MWERA 2013!***

Check the ***www.mwera.org*** website early next year for the *Call for Proposals*.  
The meeting is scheduled for November, 2013 in Evanston, Illinois.  
We hope to see you there!

If you have questions, please feel free to contact the 2013 Program Chair,  
Francis Godwyll, at ***godwyll@ohio.edu*** or any member of the MWERA 2013  
Program Committee.



## *Cross-Index to Session Sponsors*

### **A - Administration, Organization, & Leadership**

- T.0310.RO Shift Happens: What We Learn from Teacher Leaders  
 T.0440.MU Examinations of School Achievement  
 T.0800.MU Navigating Parenting: Big Challenges in Schools  
 F.0310.NO Evidence, Attitudes, and Predictors of Leadership  
 F.0440.HO University Partnerships: What Does that Really Look Like?  
 F.0800.HA Initiatives for Educational Improvement

### **B - Curriculum Studies**

- T.0440.CF Division B Posters  
 T.0800.CU Innovative Approaches to Literacy Curriculum  
 F.0140.CU Innovative Curriculum in Early Childhood and Middle School

### **C - Learning and Instruction**

- W.0200.BO Laughing and Learning: An Alternative to Shut up and Listen  
 T.0140.CU Engagement and Achievement  
 T.0800.HO Teaching and Learning - Research in Progress  
 F.0140.HA Student Learning and Creativity

### **D - Measurement and Research Methodology**

- W.0400.BO Using Microsoft® Excel to Analyze Survey Data  
 W.0700.BO An Introduction to R: The Basics  
 T.0140.HO Innovative Education Methodology  
 T.0310.CU Exploring Social Tolerance through Survey Research Design and Factor Analysis  
 T.0440.JA Real World Issues in Education Informed by Research Methodology  
 F.0800.NO An Introduction to R: Monte Carlo Simulation

### **E - Counseling & Human Development**

- T.0800.HA Changing the Context for Students with Disabilities  
 T.1040.CU Exploring Contexts, Techniques, and Interventions for College Student Success  
 F.0140.JA Counseling Interventions to Enhance Student Well-Being and Success  
 F.0800.CU Easing Transitions and Crises for Adolescents

### **G - Social Context of Education**

- T.0140.JA Social and Moral Issues in Education

- T.0310.HO Studies of Student Academic Achievement  
 T.0440.CF Division G Poster  
 T.1040.HO Studies of Identity and Self-Efficacy  
 F.0140.RO Education Changes World  
 F.0310.CU Supporting Students with Various Cultural Backgrounds to Succeed  
 F.0440.HA Valedictorians and Delinquents: Can Movies Influence the Success, Failure and Incarceration of Young American Adults?  
 F.0800.MU Ethnic Issues in School and Institution  
**H - Research, Evaluation, & Assessment in Schools**  
 T.0140.RO Evaluation of Arts Integration Projects  
 T.0310.JA Interventions for Improving Attendance and Cognitive Performance  
 F.0140.HO Correlates of Cognitive Performance and Attitudes in Various Cultural Contexts  
 F.0310.HO Evaluation Research in Progress  
 F.0440.JA Comparison of Various Approaches to Program Evaluation: K-12 School Programs

### **I - Education in the Professions**

- T.0800.JA Research in Higher Education

### **J - Postsecondary Education**

- T.0140.MU Implementing Pedagogical Changes to Improve Learning  
 T.0310.MU Understanding Undergraduate Education at Private Universities  
 T.0440.CF Division J Poster  
 T.0800.RO Exploring the Use of Structured Academic Supports  
 T.1040.HA Understanding and Promoting the Development of Undergraduate Learners  
 F.0310.JA The Impact of Institutional Climate  
 F.0800.HO Promoting Student Success in Graduate Programs

### **K - Teaching and Teacher Education**

- W.0200.CU No Assembly Required: Methods and Materials for P-Project Policy Work  
 W.0400.CU Using Short, Humorous Videos (and Research) to Enhance Teaching  
 W.0700.CU Design Literacy for Non-Designers: Experience the Fundamentals of Design Practice to Enhance Curriculum Development and Content Delivery  
 T.0310.HA Effective Mentoring and Nurturing of Pre-Service Teachers: Addressing Preconceptions in the Early Childhood

T.0440.CU	Classroom Preparing Culturally Responsive Teachers	T.1200.GL	MWERA Association Council Meeting
T.0440.CF	Division K Poster	T.0140.HA	New Member and New Student Member Welcome
T.1040.JA	Challenging Misconceptions at the Onset of Teacher Preparation Programs	T.0600.HB	President's Cracker Barrel Social
F.0310.HA	Teacher Induction: Professional Development for the Newbie	F.0930.JA	MWERA Business Meeting
F.0310.RO	Perceptions of Teachers and Different Instructional Approaches as Seen by Others in the Educational Community	F.1040.CU	Division H Meeting
F.0440.CU	Improving Instruction for College Readiness	F.1040.HO	Division K Meeting
F.0440.RO	Research in Progress in Teacher and Teacher Education	F.1040.JA	Division J Meeting
F.0800.JA	Motivation and Support to Improve Instruction	F.1040.MU	Division A Meeting
<b>L - Educational Policy and Politics</b>		F.1040.NO	Division C Meeting
T.0440.CF	Division L Posters	F.1040.RO	Division E Meeting
T.0440.HO	Division L Research in Progress	F.1040.HA	Division F Meeting
T.1040.RO	Education Policy and Issues in Finance	F.1120.HA	Division L Meeting
F.0800.RO	Current Issues in Education Policy	F.1120.MU	Division G Meeting
<b>MWERA Annual Meeting</b>		F.1120.HO	Division B Meeting
T.0930.HI	Presidential Address	F.1120.NO	Division I Meeting
T.1040.HI	Follow-Up Discussion from the Presidential Address	F.1120.RO	Division D Meeting
		F.1200.GR	Luncheon Keynote Address
		F.0140.GR	Follow-Up Discussion from the Luncheon Keynote Address
		F.0440.MU	Mid-Western Educational Researcher Journal Reviewers' Session
		F.0520.NO	MWERA Division Chair Meeting (Orientation and Conference Feedback)
		F.0600.HI	Community Session
		S.0800.HB	MWERA Board of Directors' Meeting

# SUBJECT INDEX

## Academic Outcomes

*T.0310.HO, T.0800.RO, T.1040.CU, F.0440.HA*

## Accountability

*T.0440.HO, T.1040.RO*

## Achievement

*T.0140.CU, T.0310.HO, T.0310.JA, T.0440.MU, F.0310.HO, F.0310.NO*

## Achievement Gap

*T.0440.CU, T.0440.HE, T.0440.MU, F.0440.HA*

## Action Research

*T.1040.HO*

## Administration

*F.0800.HA*

## Admissions

*T.0310.MU, T.0440.HE, F.0800.HA*

## Adolescence

*T.0140.CU, T.0800.HA, T.0800.HO, T.1040.HO, F.0310.HO, F.0310.RO, F.0440.HA, F.0800.CU*

## Adult Education/Development

*T.0140.MU, T.0440.HE*

## Affective Education

*T.0440.HE*

## African-American Education

*T.0310.HO*

## Analysis of Change

*F.0310.HO*

## Arts Education

*T.0140.RO, T.0800.CU*

## Asian Education

*T.0440.CU, F.0310.CU, F.0310.HO, F.0800.RO*

## Assessment

*T.0140.MU, T.0310.JA, F.0140.HO, F.0310.HO, F.0310.JA*

## At-Risk Students

*T.0140.JA, T.0310.JA*

## Attitude

*T.0310.HA, T.0800.HA*

## Black Education

*F.0310.CU*

## Brain Research

*W.0200.BO*

## Bullying

*T.0440.HE*

## Career Development

*T.1040.HA*

## Case Studies

*T.0440.HE*

## Certification/Licensure

*T.0800.JA*

## Chaos and Complexity

*T.0440.MU*

## Charter School

*F.0310.HO*

## Classroom Management

*F.0310.RO*

## Classroom Research

*T.0800.HO, F.0140.RO*

## Clinical Education

*T.0140.MU*

## Cognition

*T.0310.HO, T.1040.CU*

## Collaboration

*T.0140.RO, T.0800.CU*

## Colleges

*F.0310.CU*

## Communication

*T.0440.HE*

## Communities

*T.0310.HO, T.0440.JA*

## Comparative Education

*F.0140.RO*

## Computer Applications

*F.0800.HI*

## Computers and Learning

*T.0140.CU*

## Cooperative Learning

*T.0800.RO*

## Counseling

*T.0800.HA, T.1040.CU, F.0140.JA*

## Creativity

*F.0140.HA*

## Critical Race Theory

*F.0800.MU*

## Critical Theory

*T.1040.HO, F.0800.MU*

## Critical Thinking

*F.0440.CU*

## Cross-Cultural Studies

*T.0140.JA, T.0310.CU, T.0310.HO, T.1040.CU, F.0310.CU*

## Cultural Capital

*F.0140.RO*

## Cultural Groups

*F.0310.JA*

## Culturally Responsive Teaching

*T.0440.CU, F.0310.CU*

## Curriculum

*T.0440.HE, F.0140.CU*

## Curriculum Design and Evaluation

*F.0800.HO*

## Curriculum Policy and Reform

*T.0310.MU*

## Curriculum Studies and Diversity

*T.0440.HE*

## Curriculum in Classroom

*F.0140.CU, F.0310.RO*

## Data Analysis

*W.0400.BO, W.0700.BO, F.0140.HO*

## Databases

*F.0140.HO*

## Differential Item Functioning

*T.0140.HO*

## Disparities

*F.0800.RO*

## Diversity

*T.0310.CU, T.1040.HA, F.0800.MU*

## Dropouts

*T.0310.JA*

## ESL/ENL

*T.0310.HO, T.0800.CU, T.0800.HO, T.0800.RO, T.1040.CU*

## Early Childhood

*T.0310.HA, T.0800.HO*

## Educational Policy

*T.0440.HE, T.0440.HO, T.1040.RO, F.0140.RO, F.0800.RO*

## Educational Reform

*T.1040.RO, F.0140.CU, F.0800.RO*

## Efficacy

*T.0310.HA, T.0440.CU, T.1040.HO, F.0140.HO, F.0310.RO*

## Elementary Schools

*T.0440.MU*

## Emotion/Emotional Regulation

*T.1040.CU*

## Engagement

*W.0200.BO, T.0140.CU, T.0310.HO*

## English Learner

*F.0140.HO*

## Equity

*T.0440.HE*

## Ethnicity

*F.0800.HA*

## Ethnography/Auto-Ethnography

*T.0440.JA*

## Evaluation

*T.0140.RO, T.0310.JA, T.0440.HE, T.0440.JA, F.0440.RO*

## Evidence Based Education

*F.0310.HO*

## Factor Analysis

*T.0310.CU*

## Faculty Development

*T.1040.JA*

## Faculty Issues

*T.0800.JA, F.0800.MU*

## Families

*T.1040.HA*

## Finance

*T.1040.RO*

## Gay/Lesbian Studies

*W.0200.CU*  
**Gender Studies**  
*T.0800.HO*  
**Gifted Education**  
*T.1040.HO*  
**Global Education**  
*T.0310.MU, F.0140.RO*  
**Hierarchical Modeling**  
*T.0440.MU*  
**Higher Education**  
*T.0140.MU, T.0310.MU, T.0800.JA, T.1040.CU, T.1040.HA, T.1040.JA, F.0310.RO, F.0800.HA, F.0800.RO*  
**Hispanic Education**  
*F.0310.NO*  
**History**  
*T.0800.JA*  
**Holistic Education**  
*F.0800.CU*  
**Human Development**  
*T.0140.JA, T.1040.CU, T.1040.HA, F.0140.JA*  
**Identity**  
*T.1040.HO, F.0800.CU, F.0800.JA*  
**Immigrants**  
*T.1040.HO*  
**Instructional Design/Development**  
*T.0140.MU*  
**Instructional Interventions**  
*T.0310.MU, T.0800.HO*  
**Instructional Practices**  
*W.0700.CU, T.0140.CU, T.0140.RO, T.0800.CU, T.0800.HO, F.0310.HO, F.0440.CU*  
**Instructional Technology**  
*T.0440.HE*  
**Inter-Cultural Education**  
*F.0310.JA*  
**International Education/Studies**  
*T.0310.CU, T.0440.HE, F.0310.JA*  
**Item Response Theory (IRT)**  
*T.0140.HO*  
**Language**  
**Comprehension/Development**  
*T.0310.HO, F.0310.CU*  
**Latino/a, or see Hispanic**  
*F.0310.CU*  
**Law/Legal**  
*T.1040.RO*  
**Leadership**  
*T.0440.MU, F.0310.NO, F.0800.RO*  
**Leadership Development**  
*F.0310.HA*  
**Learning Environments**  
*T.0800.RO, F.0140.HA*  
**Literacy**  
*W.0700.CU, T.0310.HO, T.0800.CU, T.0800.HO, F.0310.RO*  
**Literature**  
*T.0440.HE, T.0800.CU, F.0310.RO*  
**Longitudinal Studies**  
*T.0140.JA, T.0440.JA*  
**Mainstreaming**  
*T.0800.HA*  
**Mathematics Education**  
*T.0140.CU, T.0440.CU, F.0140.HO*  
**Measurement**  
*T.0800.JA, F.0140.HO*  
**Media**  
*W.0400.CU, T.0140.RO*  
**Mentoring**  
*T.0310.HA, F.0310.HA, F.0800.HO*  
**Meta-Analysis**  
*T.0440.JA*  
**Metacognition**  
*W.0700.CU*  
**Middle Schools**  
*F.0140.CU*  
**Mixed Methods**  
*T.0140.HO, T.0440.HE, T.1040.JA*  
**Moral Education/Development**  
*T.0140.JA, T.0800.HO*  
**Motivation**  
*T.0140.CU, T.1040.HO, F.0310.HO*  
**Multicultural Education**  
*T.0440.CU*  
**Multiculturalism**  
*T.0440.HE*  
**Music Education**  
*T.0800.HO*  
**No Child Left Behind**  
*T.0440.HO, F.0310.NO*  
**Organization Theory/Change**  
*T.0440.HE, F.0310.JA*  
**Parental Involvement**  
*F.0800.RO*  
**Peace Education**  
*T.0800.HO*  
**Peer Interaction/Friendship**  
*T.0140.JA, T.0440.HE*  
**Performance Assessment**  
*T.0310.JA*  
**Physical Education**  
*F.0800.JA*  
**Planning**  
*T.1040.RO*  
**Policy**  
*W.0200.CU, F.0800.CU, F.0800.RO*  
**Politics**  
*T.0440.HE*  
**Postsecondary Education**  
*T.0310.MU, T.0440.HE, T.1040.CU, F.0310.JA, F.0800.HO*  
**Preschool**  
*T.0140.JA*  
**Principals**  
*F.0310.NO*  
**Problem-based Learning**  
*F.0140.CU, F.0310.RO*  
**Professional Development**  
*F.0310.HA, F.0440.CU, F.0440.RO, F.0800.JA*  
**Program Evaluation**  
*T.0310.JA, F.0310.JA, F.0440.JA, F.0800.JA*  
**Psychometrics**  
*F.0800.HI*  
**Qualitative Research**  
*T.0310.MU, T.0440.CU, T.0440.JA, T.0800.JA, T.1040.CU, T.1040.HO, F.0140.JA, F.0800.MU*  
**Queer Theory**  
*T.0310.CU*  
**Race**  
*T.0310.MU, T.1040.HO, F.0800.MU*  
**Reading**  
*T.0140.MU, T.0440.JA, T.0800.HO*  
**Research Methodology**  
*T.0140.HO, T.0140.MU, T.0440.JA, T.0800.JA*  
**Research Utilization**  
*T.0440.HE*  
**Retention**  
*T.0310.JA, T.0800.JA, F.0800.HA*  
**School Choice**  
*T.0440.HE*  
**School Reform**  
*T.0440.HO, F.0800.HA*  
**Science Education**  
*T.0140.CU, F.0140.CU*  
**Self-Concept**  
*T.1040.HO*  
**Situated Learning**  
*T.0440.JA*  
**Social Context**  
*T.0140.JA, T.0440.HE, T.1040.HA, F.0140.RO, F.0310.CU*  
**Social Stratification**  
*T.0140.JA*  
**Sociology**  
*T.0310.CU*  
**Special Education**  
*T.0440.CU, T.0800.HA*  
**Sports**  
*T.1040.RO, F.0310.JA*  
**Standard Setting**  
*T.0140.HO*  
**Statistics**  
*W.0700.BO, F.0800.HI*  
**Student Behavior/Attitude**  
*T.0440.HO, T.1040.CU, F.0310.HO*  
**Student Knowledge**  
*F.0800.CU*  
**Student Teaching**

*F.0310.HA*  
**Survey Research**  
*W.0400.BO, T.0140.HO, T.0310.CU,*  
*F.0310.JA*  
**Teacher Assessment**  
*T.1040.RO*  
**Teacher Characteristics**  
*F.0440.RO*  
**Teacher Education/Development**  
*W.0200.CU, T.0310.HA, T.0440.CU,*  
*T.1040.JA, F.0140.CU, F.0310.HA,*  
*F.0310.RO, F.0440.RO, F.0800.HO,*  
*F.0800.JA*  
**Teacher Induction**

*F.0310.HA, F.0800.JA*  
**Teacher Knowledge**  
*T.0310.HA, T.0440.HE, T.1040.JA*  
**Teacher Quality**  
*F.0310.RO, F.0440.RO*  
**Teacher Research**  
*F.0800.JA*  
**Teaching and Learning**  
*W.0200.BO, W.0400.CU, T.0140.CU,*  
*T.0310.HO, T.0440.CU, T.0800.CU,*  
*T.0800.JA, F.0310.CU, F.0310.RO,*  
*F.0440.RO, F.0800.JA*  
**Technology**  
*W.0400.CU, T.0440.CU*

**Test Theory/Development**  
*T.0140.HO*  
**Testing**  
*T.0140.HO*  
**Tutoring**  
*T.0800.RO*  
**Universities**  
*T.1040.RO, F.0800.HA*  
**Urban Education**  
*T.0140.RO, T.0310.HO, T.0440.HO,*  
*T.0800.RO, F.0310.HO, F.0800.HO*  
**Writing**  
*T.0440.HE, F.0800.JA*

## *Index of Session Participants*

### A

Abla, Zipporah Wanjira.....F.0800.HA  
 Acar, Ibrahim H.....T.0140.JA  
 Ahmed, Areej Ahmed .....F.0140.CU  
 Akers, Kathryn Shirley..... T.0140.HO,  
 F.1120.RO, F.0520.HI  
 Alghatani, Abdullah.....T.0800.RO  
 Allen, Amy .....T.0310.HA, T.1040.JA  
 Almburg, Anne .....T.0440.JA  
 Amakyi, Michael .....F.0800.HA  
 Angelova, Maria .....T.0800.CU  
 Atuahene, Francis ..T.0440.HO, F.0800.RO

### B

Bach, Jesse .....T.0140.JA, F.0440.HA  
 Badillo, Natale N.....F.0800.HO  
 Bagakas, Joshua ... T.0440.HE, F.0800.HO,  
 F.0140.HO  
 Ball, Alexis.....T.0310.JA  
 Bang, Hyeyoung ....T.0800.HA, F.0800.CU  
 Banicki, Guy Joseph .....T.0140.CU  
 Beasley, Mark.....S.0800.HA  
 Beaumont, Lorrie.....F.1040.CU  
 Bender-Slack, Delane.....F.0800.JA  
 Berrios-Brown, Margaret .....F.0140.HO  
 Blevins, Julie K.....F.0440.CU  
 Bradley, Kelly .....T.1200.HE, F.0930.HE  
 Brady, Amy L.....F.0310.HA  
 Bransteter, Irina .....F.0800.HO  
 Brodeur, Amy.....T.0440.JA  
 Brooks, Gordon ... W.0600.BO,T.0140.HO,  
 T.1040.HI, T.1200.HE, F.0800.NO,  
 F.0930.HE, S.0800.HA  
 Broughton, Christopher L.....T.0310.JA  
 Brown, Karen .....T.0140.CU  
 Brown, Patrick L.....T.1040.JA, F.0140.HA  
 Brown, Russell C....T.0310.JA, F.0140.HO  
 Brubaker, Jr., Kenneth D.....F.0800.JA  
 Burgin, Ximena .....T.0310.JA

### C

Cain, Katrice.....F.0140.JA  
 Calahan, Patricia S.....T.0440.CU  
 Campbell, Cynthia .. T.0930.HI, T.1040.HI,  
 F.1200.GR, S.0800.HA  
 Castro, Salvador.....W.0600.BO  
 Chae, YeonHee.....T.0800.HO  
 Chai, Hannah.....T.0440.HE, F.0800.MU  
 Chemosit, Caroline C.....T.0140.CU  
 Chin, Phoebe Fui-Yee .....T.0440.HE  
 Christensen, Sarah .....T.0440.HE  
 Clark, Chad J.....F.0440.CU  
 Clarke, Laura.....F.0800.HA  
 Cody, Tom .....T.0800.RO, T.1040.CU,  
 T.1200.HE, F.0310.JA, F.0930.HE,  
 S.0800.HA  
 Concannon, James ..T.1040.JA, F.0140.HA

Cosmah, Michelle.. T.0310.HA, F.0310.NO  
 Cripe, Kathleen Leslie .....F.0140.CU  
 Cummings, Marlon.....T.0440.HE  
 Cunningham, JessicaT.1200.HE, F.0930.HE  
 Cusack, Thomas R.....T.0440.MU

### D

David, Shannon... W.0600.BO, T.0140.HO,  
 F.0800.NO  
 Davis, Brittan .....T.0440.HE  
 Daytner, Gary.....T.0140.MU, T.0800.HO  
 Daytner, Katrina...T.0800.RO, T.1040.HA,  
 F.0520.HI, F.1040.JA  
 Derby, Dustin.....T.0140.MU, T.1200.HE,  
 F.0520.HI, F.0930.HE, F.1040.MU  
 Ding, Xiaoqian.....F.0140.JA  
 Dretzke, Beverly J.W.0400.BO, T.0140.RO,  
 T.0310.CU, T.1200.HE, F.0140.HO,  
 F.0930.HE  
 Dudley, Brittanie.....F.0800.MU  
 Duggan, James B. ....F.0440.JA  
 Durr, Tony .....T.0440.HE, T.1040.RO

### E

Edlefson, Carla.....T.0440.MU, F.0440.CU  
 Eells, Rachel J.....F.0310.HA  
 Elliott, Willie .....F.0800.MU  
 Evans, Carly.....T.0140.JA, F.0440.HA

### F

Farmer, Tod Allen.....F.0310.NO  
 Fast, Gerald.....T.0440.CU  
 Feldmann, Doug...T.10400.HI, T.1200.HE,  
 F.0930.HE  
 Fu, Yao.....F.0140.CU

### G

Gallagher, Sandra.....F.0310.HA  
 Galletta, Anne .....T.1040.HO, F.0800.CU  
 Gardner, Emily.....T.0800.HO  
 George, Alice.....F.0310.HO  
 George, Anne .....T.0310.HA, T.0800.JA,  
 F.0520.HI, F.1120.NO  
 Gil-Garcia, Ana.....F.0140.RO  
 Gilbert, Jaesook.....T.0310.HA  
 Giraldo-Garcia, Regina.....T.0800.RO,  
 T.1040.HO  
 Glick, Marilyn Petty F.0520.HI, F.1040.NO  
 Godwyll, Francis Ebenezer .....T.1200.HE,  
 F.1120.HA, F.0140.RO, F.0930.HE,  
 S.0800.HA  
 Goldman, Susan R. ....T.0800.CU  
 Goldstein, Danielle.....F.0140.JA  
 Gut, Dianne M.....F.0140.CU

### H

Hackworth, Jamilah .....F.0800.MU  
 Hall, Allison .....T.0800.CU  
 Hampton, Frederick M. ....T.0310.HO  
 Han, HanT.0310.HO, F.0140.JA, F.0310.HO  
 Hankes, Judith Elaine.....T.0440.CU  
 Harte, Helene Arbouet.....T.0310.HA  
 Hartman, Tiffany B. ....T.1040.JA  
 Hasebe, Yuki .....T.0140.JA  
 Hathorn, Connie.....T.0440.MU  
 Hazem, Doaa .....T.0140.CU  
 Hedges, Larry V.... F.0140.GR, F.1200.GR  
 Henning, Mary Beth F.0800.HO, F.0310.HA  
 Hitchcock, John ....T.0140.HO, T.0310.CU,  
 T.0440.JA  
 Hogan, Maggie .....T.0800.HO  
 Hohenbrink, JoAnn T.0310.RO, F.0440.HO  
 Holahan, Maeve.....T.0800.HO  
 Holbert, Romena Marie.....T.0310.HO,  
 F.0440.RO  
 Holt, Janet K.....T.0310.JA, T.1040.HI,  
 F.0520.HI, F.1040.CU  
 Hong, JongKoo.....F.0310.HO  
 Howard, Kelly.....F.0440.JA  
 Huang, Ding .....T.0140.JA  
 Huang, Xiaodan....T.0140.JA, T.0440.CU,  
 T.1040.HO  
 Hummons, Monica Perry.....F.0440.CU  
 Hung, Wei-Chen.....F.0140.HO  
 Husband, Terry .....T.0440.HO

### I

Ingram, Debra.....T.0140.RO, F.0310.HO

### J

Jackson May, Judy T.0440.MU, F.0800.RO  
 Jacobsen, Linda Fraser .....T.0800.MU,  
 T.0440.JA, F.0310.JA  
 Jin, Hongyuan.....F.0140.JA  
 Jin, Weili.....T.1040.CU  
 Johnson, Laura Ruth .....T.0440.JA,  
 F.0600.GR  
 Johnson, Leah.....F.0440.RO  
 Johnson, Stephanie.....T.1040.RO  
 Jonas, Peter MarkW.0200.BO, W.0400.CU,  
 F.0140.HA

### K

Kallemeyn, Leanne .....F.0310.HO  
 Katz, Susan J. ....F.0800.HA  
 Konkol, Pamela .....W.0200.CU  
 Koskey, Kristin L. K. ....F.0440.MU  
 Kumalasari, Asteria Devy.....F.0310.HO  
 Kushner Benson, Susan N. ....F.0440.MU,  
 S.0800.HA  
 Kwarteng, Seth Amponsah.....T.0800.HA

## L

LaLuzerne, Michelle Marie ..... F.0440.RO  
Lamb, Jacqueline ..... T.1040.HO  
Lamping, Sally A... T.0310.HO, F.0310.RO  
Lancaster, Vanessa Anne..... T.1040.HO  
Larrabee, Timothy G. .... T.0310.CU  
Lavigne, Alyson..... F.0310.CU  
Leavitt, Lynda ..... T.0310.MU, F.0800.RO,  
F.0140.HA, F.0520.HI  
Lee, Carol D. .... T.0800.CU  
Lee, Cheu-jey ..... F.0310.RO  
Lewis, Marsha ..... W.0600.BO, F.0800.NO  
Li, Ting T.0140.RO, T.0310.RO, T.1040.RO,  
F.0800.RO  
Li, Wenshu ..... T.0140.JA, F.0140.JA,  
F.0800.CU  
Liang, Xin ..... F.0440.MU  
Liao, Hongjing..... T.0440.JA  
Loadman, William ..... T.0440.JA  
Love, Carrie..... T.0140.JA, F.0440.HA  
Love, Mary Susan..... F.0440.RO  
Lucas, Stephen E. .... F.0800.JA  
Lyutykh, Elena ..... T.0140.CU

## M

Maddocks, Amanda Mulcahy .. T.0140.MU,  
T.0440.JA, F.0800.HO  
Magiste, Edward J..... T.0800.RO  
Mahon, Tammy ..... F.0310.RO  
Malone, Terrence..... T.0800.MU  
Mansfield, Eric ..... T.1200.HE, F.0310.JA,  
F.0800.JA, F.0930.HE  
Marchant, Gregory J. .... T.0440.HE  
Masta Zywicki, Stephanie ..... F.0800.MU  
May, Jennifer Erin ..... T.0440.MU  
McCloud, Laila..... T.0310.MU  
McConnell, Patty ..... T.0440.HE  
McCormack, Ginny..... F.0310.HA  
McElhiney, Danielle ..... W.0600.BO,  
F.0800.NO  
McKenna, Cornelius T.1200.HE, F.0140.HO,  
F.0930.HE  
McNeely, Sharon ... T.1200.HE, F.0440.JA,  
F.0930.HE, S.0800.HA  
Meath, Judy L. .... T.0140.RO  
Meidl, Christopher T.0440.HE, T.0800.HO,  
F.0440.RO  
Meidl, Tynisha..... T.0800.HO  
Meiners, Erica ..... W.0200.CU  
Mertler, Craig ..... T.1040.HI  
Michie, Gregory..... T.0310.MU  
Milam, Jennifer..... F.0440.MU  
Miretzky, Debra... T.0310.MU, T.1040.HA,  
F.1040.JA  
Mitton, Christine Baker..... T.0310.CU  
Montalvo, Greg..... T.0440.CU, T.1200.HE,  
F.0800.HO, F.0930.HE

## N

Newman, David..... T.1200.HE, F.0930.HE  
Nichols, Justin K..... T.1040.RO

Nunez, Isabel ..... W.0200.CU  
Nur-Awaleh, Mohamed A..... T.0310.HO,  
T.0440.MU, T.0800.JA, F.0310.CU  
Nyangau, Josiah Zachary ..... F.0800.HA

## O

Oberg De La Garza, Tammy .... F.0310.CU  
Ogunbodede, Caroline ..... F.0440.JA  
Okrasinski, Jeanne..... F.0310.HA  
Olive, James..... T.1200.HE, F.0930.HE  
Olson, Jennifer D..... T.0440.HO  
Omachonu, Florence Eniye ..... T.1040.JA  
Owusu-Ansah, Anthony..... F.0800.RO  
Oyer, Brenda..... F.0310.NO

## P

Parisi, Joseph A..... T.0310.MU  
Parman, Laura ..... F.0440.JA  
Pascoe, Alicia..... T.0800.HA  
Pasero, Spencer ..... T.0310.JA, T.0800.CU,  
T.1040.RO  
Patterson, Mary Kate ..... F.0800.JA  
Paulson, Sharon E..... T.0440.HE  
Payne, Michael John..... T.0800.HO  
Pennington, Jessica..... T.0800.JA  
Phipps, Jonnie Jill.. T.0800.CU, T.1200.HE,  
F.0310.RO, F.0930.HE, F.1040.HO  
Pitre, Sneha..... T.0440.HE  
Place, Will ..... T.1040.HI  
Pokay, Patricia A..... T.1040.JA  
Pollom, Andrew ..... T.0310.MU  
Polydore, Catherine L..... F.0800.JA  
Post, Peter ..... F.0440.JA  
Price, Emily ..... W.0600.BO, T.0140.HO,  
T.0310.CU, F.0800.NO

## Q

Quinn, Keelan ..... T.1040.HO, T.0440.HE,  
F.0800.CU  
Quinn, Therese..... W.0200.CU

## R

Raddatz, Mikaela..... T.0800.JA  
Radzicki, Elizabeth..... T.0140.RO  
Ragan, Moira..... W.0600.BO  
Rausch, John L..... T.0800.HA, F.0140.JA  
Ren, Zhen ..... T.1040.CU  
Richard, Cynthia ..... T.0310.HA  
Richardson, Robyn ..... W.0700.CU  
Rickers, Susan R. .... T.0140.RO  
Rispinto, Sarah..... F.0800.HO  
Rivera, Nicole Ruth T.0440.JA, T.0800.HA,  
T.1040.CU  
Roberts, Amy ..... F.0310.CU  
Rodgers, Adrian ..... F.0800.JA  
Rollins, Diane ..... T.0440.MU  
Rosales de Veliz, Leslie Vanessa  
..... W.0600.BO, F.0800.NO  
Ross McClain, Pamela Louise... F.0310.CU  
Royal, Kenneth D..... T.0800.JA

Ruble, Michelle Lee..... F.0440.HO  
Rugutt, John K..... T.0140.CU

## S

Sanders, Eugene.... T.0440.MU, F.0800.RO  
Saunders, Nancy G..... T.0440.HE  
Schauer, Margaret... T.0140.JA, F.0440.HA  
Schott, Molly Nackley ..... T.0310.CU  
Schrad, Julie ..... T.0140.MU  
Schroer, Joseph Earl..... T.0800.HO  
Shafer, Cynthia..... F.0310.JA  
Sharp, Chryssa ..... F.0140.HA  
Sheldon, Timothy D..... T.0310.JA  
Sixel, Katie..... T.0440.HE  
Slutsky, Ruslan..... T.0310.HA  
Smith, Elizabeth..... W.0600.BO  
Smith, Thomas J. . T.1200.HE, T.0140.HA,  
F.0930.HE, F.1120.MU, F.0140.HO,  
F.0520.NO, S.0800.HA  
Soboleski, Penny..... T.0800.JA, T.1040.JA,  
F.1120.NO, F.0140.HA, F.0520.HI  
Soegijardjo, Witriani..... T.0140.CU,  
F.0140.RO, F.0310.HO  
Soljaga, Dara ..... T.0140.MU  
Sosa, Teresa..... T.0800.CU  
Sparapani, Ervin F.. T.0440.CU, F.0310.CU  
Spickard Prettyman, Sandra..... F.0440.MU  
Spudich, Christine.. T.0800.CU, T.1040.HA  
Spudich, Dimana... T.0800.CU, T.1040.HA  
Stacey, Skoning ..... T.0440.CU  
Stauffer, Marliisa.. T.0310.RO, F.0310.HA,  
F.0440.HO  
Stemler, Margaret ..... F.0440.JA  
Stevens, Sharon ... T.1040.HA, T.0310.MU,  
F.1040.JA  
Stribling, Colleen..... T.0440.JA  
Stuckey, Angeline. T.1040.CU, T.1200.HE,  
F.0140.JA, F.0930.HE  
Stuckey-Danner, Bridget ..... T.1200.HE,  
F.0930.HE  
Stuckey-Mickell, Tracey ..... T.0140.MU,  
F.0140.JA, F.0520.HI, F.0800.CU,  
F.1040.RO  
Stumme, Simeon... T.0310.MU, T.1040.HO

## T

Thai, Luyen T. .... T.1040.HO  
Thankachan, Brijun..... T.0310.CU  
Thurrow, Peggy ..... F.0310.NO  
Toniolo, Catherine ..... F.0440.RO  
Torquati, Julia..... T.0140.JA  
Tosolt, Brandelyn . T.0310.CU, T.1200.HE,  
F.0800.MU, F.0930.HE  
Trapp, William James ..... T.0140.HO  
Turner, Georgia ..... F.0800.MU

## V

Valente, Sharon A.. T.0140.RO, T.1040.HI,  
T.1200.HE, F.0140.CU, F.0520.HI,  
F.0800.JA, F.0930.HE, F.1120.HO  
Vaughan, Winston E. .... T.0440.CU

Vodicka, Christine .....T.0800.RO

## W

Wade, Nicolas.....F.0440.JA

Walker, David A. .... T.0930.HI, T.1040.HI,  
T.1200.NO, F.0140.GR, F.0930.HI,  
F.0520.NO, S.0800.HA

Wang, Aimin ..... T.0140.JA, T.0310.HO,  
T.1040.CU, T.1200.HE, F.0140.JA,  
F.0310.CU, F.0930.HE, S.0800.HA

Wang, Yikang..... F.0310.CU

Weir, Graham ..... T.0310.MU, F.0310.JA

Weiss, Cynthia.....T.0140.RO

Wellen, Lauren ..... T.0800.JA

Wheatley, Vicki.....T.1040.RO

Wilberschied, Lee..... T.0800.CU

Wilkins, Elizabeth. F.0310.HA, F.0800.HO

Williams, Tiffany R.T.1040.HO, T.0440.HE,  
F.0800.CU

Wingfield, Tuwana T..... T.0800.JA

Wisdom, Sherrie..... T.0310.MU, F.0310.JA

Wynn, Sherri..... F.0310.RO

## X

Xu, Deyu ..... T.0140.HO

## Y

Young, Teresa..... F.0800.JA

Yu, Hanbing ..... F.0140.RO

## Z

Zaleski, Diana Janet ..... T.0140.CU

Zhang, He..... F.0140.JA

Zhang, Xiaowei ..... T.1040.CU

Zhao, Lu..... T.0310.HO

Zhao, Xi T.1040.CU, F.0520.HI, F.1120.HI

Zigler, Ted..... T.0310.RO, F.0310.NO,  
F.0440.HO

Zimmerman, Judith.T.1200.HE, F.0930.HE

Zygiel, Miranda ..... T.0440.HE

Please complete a Conference Evaluation to help us improve the conference in 2013!  
If you are in need of an evaluation, please contact the Member-at-Large representative,  
Tom Smith, at [tjsmith@niu.edu](mailto:tjsmith@niu.edu)



## *Directory of Conference Participants*

- Abla, Zipporah Wanjira** *znyaga@bgsu.edu*  
Bowling Green State University
- Acar, Ibrahim H.** *ihacar@gmail.com*  
University of Nebraska-Lincoln
- Ahmed, Areej Ahmed** *aa239707@ohio.edu*  
Ohio University
- Akers, Kathryn Shirley** *kate.akers@education.ky.gov*  
Kentucky Department of Education/ Kentucky P20 Data Collaborative
- Alghatani, Abdullah** *a.alghatani@csuohio.edu*  
Cleveland State University
- Allen, Amy** *amy.allen@utoledo.edu*  
The University of Toledo
- Almburg, Anne** *anne.almburg@dist428.org*  
Founders Elementary School, DeKalb, IL
- Amakyi, Michael** *mamakyi@yahoo.com*  
Institute for Educational Planning Administration, University of Cape Coast-Ghana
- Angelova, Mariam** *angelova@csuohio.edu*  
Cleveland State University
- Atuahene, Francis** *fatuahene@wcupa.edu*  
West Chester University of Pennsylvania
- Bach, Jesse** *jesse.e.bach@gmail.com*  
Cleveland State University
- Badillo, Natale N.** *jnbadillo@sbcglobal.net*  
Cleveland State University
- Bagakas, Joshua** *j.bagakas@csuohio.edu*  
Cleveland State University
- Ball, Alexis** *aball4@niu.edu*  
Northern Illinois University
- Bang, Hyeyoung** *hbang@bgsu.edu*  
Bowling Green State University
- Banicki, Guy Joseph** *gbanick@ilstu.edu*  
Illinois State University
- Beasley, Mark T.** *mbeasley@uab.edu*  
University of Alabama at Birmingham
- Beaumont, Lorrie** *lbeaumont@evergreeneresearch.com*  
Evergreene Research and Evaluation
- Bender-Slack, Delane** *benderslackd@xavier.edu*  
Xavier University
- Berrios-Brown, Margaret** *Margaret.berrios.brown@gmail.com*  
Cleveland Metropolitan School District
- Blevins, Julie K.** *jblevin1@ashland.edu*  
Ashland University
- Bradley, Kelly** *kbrad2@uky.edu*  
University of Kentucky
- Brady, Amy L** *abrady@ashland.edu*  
Ashland University
- Bransteter, Irina** *bransteter@aol.com*  
Cleveland State University
- Brodeur, Amy** *abrodeur@stfrancis.edu*  
University of St. Francis
- Brooks, Gordon** *brooksg@ohio.edu*  
Ohio University
- Broughton, Christopher L.** *christopher.l.broughton@cmsdnet.net*  
Cleveland Metropolitan School District
- Brown, Karen** *kbrown@nazarethacademy.com*  
Nazareth Academy
- Brown, Patrick L** *plbtfc@gmail.com*  
Fort Zumwalt School District
- Brown, Russell C.** *russell.c.brown@cmsdnet.net*  
Cleveland Metropolitan School District
- Brubaker, Jr., Kenneth D.** *kbrubake@ashland.edu*  
Ashland University
- Burgin, Ximena** *xrecald1@niu.edu*  
Northern Illinois University
- Cain, Katrice** *essence1597@gmail.com*  
John Carroll University
- Calahan, Patricia S.** *djst@svsu.edu*  
Saginaw Valley State University
- Campbell, Cynthia** *ccampbell@niu.edu*  
Northern Illinois University
- Castro, Salvador** *ft122319@ohio.edu* Ohio University
- Chae, YeonHee** *yhae1@sycamores.indstate.edu*  
Indiana State University
- Chai, Hannah** *chaihannah@hotmail.com*  
Wright State University
- Chemosit, Caroline C.** *ccchemosit@ilstu.edu*  
Illinois State University
- Chin, Phoebe Fui-Yee** *fuiyeechin@hotmail.com*  
Southern Illinois University-Carbondale
- Christensen, Sarah** *sarah.christensen@snc.edu*  
Saint Norbet College
- Clark, Chad J.** *clark@wcohs.org*  
Ashland University
- Clarke, Laura** *lscarle@bsu.edu*  
Ball State University
- Cody, Tom** *tj-cody@wiu.edu*  
Western Illinois University
- Concannon, James** *Jim.Concannon@westminster-mo.edu*  
Westminster College
- Cosmah, Michelle** *cosmah@gmail.com*  
University of Cincinnati
- Cripe, Kathleen Leslie** *mlcripe@ysu.edu*  
Youngstown State University
- Cummings, Marlon** *micummings@sbcglobal.net*  
University of Illinois-Chicago
- Cunningham, Jessica** *Jessica.d.cunningham@gmail.com*  
Georgetown College
- Cusack, Thomas R.** *thomasrcusack@gmail.com*  
Cleveland State University
- David, Shannon** *sd156409@ohio.edu*  
Ohio University
- Davis, Brittan** *brittanleedavis@gmail.com*  
Cleveland State University
- Daytner, Gary** *GT-Daytner@wiu.edu*  
Western Illinois University
- Daytner, Katrina** *KM-Daytner@wiu.edu*  
Western Illinois University
- Derby, Dustin** *dustin.derby@palmer.edu*  
Palmer College of Chiropractic
- Ding, Xiaoqian** *liw7@muohio.edu*  
Liaoning Normal University
- Dretzke, Beverly J.** *dretz001@umn.edu*  
University of Minnesota
- Dudley, Brittanie** *dudleyb1@nku.edu*  
Northern Kentucky
- Duggan, James B.** *JDuggan@district130.org*  
Illinois Community District 130
- Durr, Tony** *tdurr@augie.edu*  
Augustana College

**Edlefson, Carla** *cedlefs@ashland.edu*  
Ashland University

**Eells, Rachel J.** *Rachel.Eells@cuchicago.edu*  
Concordia University-Chicago

**Elliott, Willie** *elliott@nku.edu*  
Northern Kentucky University

**Evans, Carly** *csevans19@hotmail.com*  
Cleveland State University

**Farmer, Tod Allen** *farmer@tarleton.edu*  
Tarleton State University, Texas A&M University System

**Fast, Gerald** *fast@uwosh.edu*  
University of Wisconsin-Oshkosh

**Feldmann, Doug** *feldmann1@nku.edu*  
Northern Kentucky University

**Fu, Yao** *fuyao861122@gmail.com*  
Shawnee State University

**Gallagher, Sandra** *sgallagh@ashland.edu*  
Ashland University

**Galletta, Anne** *a.galletta@csuohio.edu*  
Cleveland State University

**Gardner, Emily** *emily.gardner@snc.edu*  
Saint Norbert College

**George, Alice** *aliceg@speakeasy.net*  
Columbia College-Chicago

**George, Anne** *george@sxu.edu*  
Saint Xavier University

**Gil-Garcia, Ana A-Serafin** *aneu.edu*  
Northeastern Illinois University

**Gilbert, Jaesook** *gilbertj2@nku.edu*  
Northern Kentucky University

**Giraldo-Garcia, Regina** *reginagiraldo@gmail.com*  
Cleveland State University

**Glick, Marilyn Petty** *mpglick@iuk.edu*  
Indiana University-Kokomo

**Godwyll, Francis Ebenezer** *godwyll@ohio.edu*  
Ohio University

**Goldman, Susan R.** *sgoldman@uic.edu*  
University of Illinois-Chicago

**Goldstein, Danielle** *dgoldstein11@jcu.edu*  
John Carroll University

**Gut, Dianne M** *Gut@ohio.edu*  
Ohio University, McCracken 313, Athens, OH 45701

**Hackworth, Jamilah** *hackworthj4@nku.edu*  
Northern Kentucky University

**Hall, Allison** *allison.h.hall@gmail.com*  
University of Illinois-Chicago

**Hampton, Frederick M.** *f.hampton@csuohio.edu*  
Cleveland State University

**Han, Han** *hanh2@muohio.edu*  
Miami University

**Hankes, Judith Elaine** *hankes@uwosh.edu*  
University of Wisconsin-Oshkosh,

**Harte, Helene Arbouet** *harteh1@gmail.com*  
The University of Cincinnati, Blue Ash College

**Hartman, Tiffany B.** *thartma3@emich.edu*  
Eastern Michigan University

**Hasebe, Yuki** *Y-hasebe@wiu.edu*  
Western Illinois University

**Hathorn, Connie** *connie.hathorn@youngstown.k12.oh.us*  
Youngstown City Schools

**Hazem, Doaa** *doaa\_12@hotmail.com*  
American University-Cairo

**Hedges, Larry V.** *l-hedges@northwestern.edu*  
Northwestern University

**Henning, Mary Beth** *mhenning@niu.edu*  
Northern Illinois University

**Hitchcock, John** *hitchcoc@ohio.edu*  
Ohio University

**Hogan, Maggie** *maggie.hogan@snc.edu*  
Saint Norbert College

**Hohenbrink, JoAnn** *hohenbrj@ohiodominican.edu*  
Ohio Dominican University

**Holahan, Maeve** *maeve.holahan@snc.edu*  
Saint Norbert College

**Holbert, Romena Marie** *romenaholbert@yahoo.com*  
Wright State University

**Holt, Janet K.** *janholt@siue.edu*  
Southern Illinois University-Edwardsville

**Hong, JongKoo** *jkhong@bsu.edu*  
Ball State University

**Howard, Kelly** *KellyAnnHoward@hotmail.com*  
Argosy University

**Huang, Ding** *huangd@muohio.edu*  
Miami University

**Huang, Xiaodan** *xhuang@shawnee.edu*  
Shawnee State University

**Hummons, Monica Perry** *mperry@ashland.edu*  
Ashland University

**Hung, Wei-Chen** *whung@niu.edu*  
Northern Illinois University

**Husband, Terry** *thusban@ilstu.edu*  
Illinois State University

**Ingram, Debra** *d-ingram@umn.edu*  
University of Minnesota

**Jackson May, Judy** *judyjac@bgsu.edu*  
Bowling Green State University

**Jacobsen, Linda Fraser** *lff@globalvisionstrategies.com*  
University of Missouri-St. Louis

**Jin, Hongyuan** *hanh2mu@gmail.com*  
Liaoning Normal University

**Jin, Weili** *jinw@muohio.edu*  
Miami University

**Johnson, Laura Ruth** *lrjohnson70@gmail.com*  
Northern Illinois University

**Johnson, Leah** *johnsol@ipfw.edu*  
Indiana University-Purdue University Fort Wayne

**Johnson, Stephanie** *Stephanie.Johnson@k12.sd.us*  
Augustana College

**Jonas, Peter Mark** *pmjonas@att.net*  
Cardinal Stritch University

**Kallemeyn, Leanne** *lkallemeyn@luc.edu*  
Loyola University-Chicago

**Katz, Susan J.** *skatz@roosevelt.edu*  
Roosevelt University

**Konkol, Pamela** *pamela.konkol@cuchicago.edu*  
Concordia University-Chicago

**Koskey, Kristin L. K.** *koskey@uakron.edu*  
The University of Akron

**Kumalasari, Asteria Devy** *asteria\_devy@yahoo.com*  
Universitas Padjadjaran, Bandung, Indonesia

**Kushner Benson, Susan N.** *snk@uakron.edu*  
The University of Akron

**Kwarteng, Seth Amponsah** *skwarteng@ucc.edu.gh*  
University of Cape Coast-Ghana

**LaLuzerne, Michelle Marie** *michelle.laluzerne@snc.edu*  
St. Norbert College

**Lamb, Jacqueline** *jacquelinelamb07@yahoo.com*  
Cleveland State University

**Lamping, Sally A.** *sally.lamping@wright.edu*  
Wright State University

**Lancaster, Vanessa Anne** *vlancast@emich.edu*  
Eastern Michigan University

**Larrabee, Timothy G.** *larrabee@oakland.edu*  
Oakland University, 470 G Pawley Hall, Rochester, MI 48309

**Lavigne, Alyson** *allavigne@roosevelt.edu*  
Roosevelt University

**Leavitt, Lynda** *lleavitt@lindenwood.edu*  
Lindenwood University

**Lee, Carol D.** *cdlee@northwestern.edu*  
Northwestern University

**Lee, Cheu-jei** *leecg@ipfw.edu*  
Indiana University-Purdue University Fort Wayne

**Lewis, Marsha** *lewism5@ohio.edu*  
Ohio University

**Li, Ting** *lit@muohio.edu*  
Miami University

**Li, Wenshu** *liwenshu1988@gmail.com*  
Miami University

**Liang, Xin** *liang@uakron.edu*  
The University of Akron

**Liao, Hongjing** *hl346309@ohio.edu*  
Ohio University

**Loadman, William** *loadman.1@osu.edu*  
The Ohio State University

**Love, Carrie** *clove04@jcu.edu*  
Cleveland State University

**Love, Mary Susan** *mlove@uwlax.edu*  
University of Wisconsin-La Crosse

**Lucas, Stephen E.** *selucas@eiu.edu*  
Eastern Illinois University

**Lyutykh, Elena** *elyutykh@gmail.com*  
Concordia University-Chicago

**Maddocks, Amanda Mulcahy** *amanda.maddocks@cuchicago.edu*  
Concordia University-Chicago

**Magiste, Edward J.** *e.j.magiste@csuohio.edu*  
Cleveland State University

**Mahon, Tammy** *tammy.mahon@indwes.edu*  
Indiana Wesleyan University

**Malone, Terrence** *malone\_t@summitcds.org*  
The Summit Country Day School

**Mansfield, Eric** *ea-mansfield@wiu.edu*  
Western Illinois University

**Marchant, Gregory J.** *gmarchant@bsu.edu*  
Ball State University

**Masta Zywicki, Stephanie** *smasta@iastate.edu*  
Iowa State University

**May, Jennifer Erin** *mayxje01@gmail.com*  
The Sanders Transformation Group, LLC

**McCloud, Laila** *Laila.mccloud@cuchicago.edu*  
Concordia University-Chicago

**McConnell, Patty** *patty.mcconnell@snc.edu*  
Saint Norbert College

**McCormack, Ginny** *mccormav@ohiodominican.edu*  
Ohio Dominican University

**McElhiney, Danielle** *Dm356310@ohio.edu*  
Ohio University

**McKenna, Cornelius** *neal@corncountry.net*  
Kishwaukee College

**McNeely, Sharon** *smcneeley@argosy.edu*  
Argosy University

**Meath, Judy L.** *meath@umn.edu*  
University of Minnesota

**Meidl, Christopher** *christopher.meidl@snc.edu*  
Saint Norbert College

**Meidl, Tynisha** *tynisha.meidl@snc.edu*  
Saint Norbert College

**Meiners, Erica** *e-meiners@neiu.edu*  
Northeastern Illinois University

**Mertler, Craig** *cmertler@lynn.edu*  
Lynn University

**Michie, Gregory** *gregory.michie@cuchicago.edu*  
Concordia University-Chicago

**Milam, Jennifer** *jmilam@uakron.edu*  
The University of Akron

**Miretzky, Debra** *d-miretzky@wiu.edu*  
Western Illinois University

**Mitton, Christine Baker** *c.mitton@csuohio.edu*  
Cleveland State University

**Montalvo, Greg** *gp-montalvo@wiu.edu*  
Western Illinois University

**Newman, David** *dnewma14@fau.edu*  
Florida Atlantic University

**Nichols, Justin K.** *jnichols4life@yahoo.com*  
University of Kentucky

**Nunez, Isabel** *isabel.nunez@cuchicago.edu*  
Concordia University-Chicago

**Nur-Awaleh, Mohamed A.** *manuraw@ilstu.edu*  
Illinois State University

**Nyangau, Josiah Zachary** *jnyangau@kent.edu*  
Kent State University

**Oberg De La Garza, Tammy** *tobergdelagarza@roosevelt.edu*  
Roosevelt University

**Ogunbodede, Caroline** *caroline.ogunbodede@d300.org*  
Argosy University

**Okrasinski, Jeanne** *jeokrasinski@eiu.edu*  
Eastern Illinois University

**Olive, James** *jolive@ashland.edu*  
Ashland University

**Olson, Jennifer D.** *jolson21@uic.edu*  
University of Illinois-Chicago

**Omachonu, Florence Eniye** *Omachonuf@uwplatt.edu*  
University of Wisconsin-Platteville

**Owusu-Ansah, Anthony** *Anthony.Owusu-Ansah@asurams.edu*  
Albany State University

**Oyer, Brenda** *oyerb@bgsu.edu*  
Bowling Green State University

**Parisi, Joseph A.** *jparisi@lindenwood.edu*  
Lindenwood University

**Parman, Laura** *laura.parman@d300.org*  
Lakewood School Carpentersville Community District 300

**Pascoe, Alicia** *leelah828@yahoo.com*  
John Carroll University

**Pasero, Spencer** *pasero@gmail.com*  
Fermilab Education Office

**Patterson, Mary Kate** *teachmkp@columbus.rr.com*  
The Ohio State University

**Paulson, Sharon E.** *spaulson@bsu.edu*  
Ball State University

**Payne, Michael John** *payne.34@wright.edu*  
Wright State University

**Pennington, Jessica** *jessicagrewe@hotmail.com*  
University of Kentucky

**Phipps, Jonnie Jill** *Phipps@uakron.edu*  
The University of Akron

**Pitre, Sneha** *snehapitre2@gmail.com*  
Cleveland State University

**Place, Will** *will.place@notes.udayton*  
University of Dayton

**Pokay, Patricia A.** *ppokay@emich.edu*  
Eastern Michigan University

**Pollom, Andrew** *andrew.pollom@cuchicago.edu*  
Concordia University-Chicago

**Polydore, Catherine L** *cpolydore@eiu.edu*  
Eastern Illinois University

**Post, Peter** *Pete.Post@trnty.edu*  
Trinity Christian College

**Price, Emily** *ep311508@ohio.edu*  
Ohio University

**Quinn, Keelan** *keelan.quinn@gmail.com*  
Cleveland State University

**Quinn, Therese** *tquinn@saic.edu*  
School of the Art Institute of Chicago

**Raddatz, Mikaela** *mikaelaraddatz@hotmail.com*  
University of Kentucky

**Radzicki, Elizabeth** *eparrott@colum.edu*  
Columbia College-Chicago

**Ragan, Moira** *mr143312@ohio.edu* Ohio University

**Rausch, John L** *jrausch@jcu.edu*  
John Carroll University

**Ren, Zhen** *renz3@muohio.edu*  
Miami University

**Richard, Cynthia** *cynthia.richard@utoledo.edu*  
The University of Toledo

**Richardson, Robyn** *rarichar@scad.edu*  
Savannah College of Art and Design

**Rickers, Susan R.** *rick0053@umn.edu*  
University of Minnesota

**Rispinto, Sarah** *michalosscom@gmail.com*  
Cleveland State University

**Rivera, Nicole Ruth** *nicolerivera@hotmail.com*  
North Central College/ Northern Illinois University

**Roberts, Amy** *aroberts06@roosevelt.edu*  
Roosevelt University

**Rodgers, Adrian** *roddgers.50@osu.edu*  
The Ohio State University

**Rollins, Diane** *diane.rollins@youngstown.k12.oh.us*  
Youngstown City Schools

**Rosales de Veliz, Leslie Vanessa** *lr236007@ohio.edu*  
Ohio University

**Ross McClain, Pamela Louise** *prossmclain@spsd.net*  
Saginaw Public School District

**Royal, Kenneth D.** *kroyal@theabfm.org*  
American Board of Family Medicine

**Ruble, Michelle Lee** *michelle.ruble@douglas.k12.ga.us*  
Douglas County School System

**Rugutt, John K.** *jkrugut@ilstu.edu*  
Illinois State University

**Sanders, Eugene** *genesanders11@gmail.com*  
The Sanders Transformation Group, LLC

**Saunders, Nancy G.** *nancy.saunders@indwes.edu*  
Indiana Wesleyan University

**Schauer, Margaret** *mschauer@luthermemorialschool.org*  
Cleveland State University

**Schott, Molly Nackley** *mollynschott@gmail.com*  
Cleveland State University

**Schrad, Julie** *schrad\_j@palmer.edu*  
Palmer College of Chiropractic

**Schroer, Joseph Earl** *schroerj@pnc.edu*  
Purdue University-North Central

**Shafer, Cynthia** *cshafer1@udayton.edu*  
University of Dayton

**Sharp, Chryssa** *cdsharp@lindenwood.edu*  
Lindenwood University

**Sheldon, Timothy D.** *sheld005@umn.edu*  
University of Minnesota

**Sixel, Katie** *katie.sixel@snc.edu*  
Saint Norbert College

**Slutsky, Ruslan** *ruslan.slutsky@utoledo.edu*  
The University of Toledo

**Smith, Elizabeth** *ls208410@ohio.edu* Ohio University

**Smith, Thomas J.** *tjsmith@niu.edu*  
Northern Illinois University

**Soboleski, Penny** *pennys@bgsu.edu*  
Bowling Green State University

**Soegijardjo, Witriani** *wshxd@mail.missouri.edu*  
University of Missouri-Columbia

**Soljaga, Dara** *dara.soljaga@cuchicago.edu*  
Concordia University-Chicago

**Sosa, Teresa** *tsosa2@uic.edu*  
University of Illinois-Chicago

**Sparapani, Ervin F.** *efs@svsu.edu*  
Saginaw Valley State University

**Spickard Prettyman, Sandra** *ssandra@uakron.edu*  
The University of Akron

**Spudich, Christine** *cspudich@slu.edu*  
Saint Louis University

**Spudich, Dimana** *dspudich@slu.edu*  
Saint Louis University

**Stacey, Skoning** *skonings@uwosh.edu*  
University of Wisconsin-Oshkosh

**Stauffer, Marlissa** *stauffem@ohiodominican.edu*  
Ohio Dominican University

**Stemler, Margaret** *margaret.stemler@nl.edu*  
National Louis University

**Stevens, Sharon** *SR-Stevens2@wiu.edu*  
Western Illinois University

**Stribling, Colleen** *colleen.stribling@mchsi.com*  
Elgin Community College

**Stuckey, Angeline** *angeline.stuckey@oswego.edu*  
State University of New York-Oswego,

**Stuckey-Danner, Bridget** *bstuckey@ccc.edu*  
Olive-Harvey College

**Stuckey-Mickell, Tracey** *stuckey-mickell.1@osu.edu*  
The Ohio State University

**Stumme, Simeon** *simeon.stumme@cuchicago.edu*  
Concordia University-Chicago

**Thai, Luyen T.** *luyen.t.thai@gmail.com*  
Texas A & M University

**Thankachan, Briju** *bt284107@ohio.edu*  
Ohio University

**Thurrow, Peggy** *Peggy.Thurrow@d300.org*  
Argosy University & District 300

**Toniolo, Catherine** *katie.toniolo@snc.edu*  
Saint Norbert College

**Torquati, Julia** *jtorguati1@unl.edu*  
University of Nebraska-Lincoln

**Tosolt, Brandelyn** *tosoltb1@nku.edu*  
Northern Kentucky University

**Trapp, William James** *w\_trapp@yahoo.com*  
Riverside Publishing

**Turner, Georgia** *turnerg3@nku.edu*  
Northern Kentucky University

**Valente, Sharon A.** *valents@stthom.edu*  
University of St. Thomas-Houston

**Vaughan, Winston E.** *vaughan@xavier.edu*  
Xavier University

**Vodicka, Christine** *c.vodicka@csuohio.edu*  
Cleveland State University

**Wade, Nicolas** *nicolasdwade@gmail.com*  
Winnebago Community Unit School District 323

**Walker, David A.** *mwera2012@niu.edu*  
Northern Illinois University

**Wang, Aimin** *wanga@muohio.edu*  
Miami University

**Wang, Yikang** *wangy33@muohio.edu*  
Miami University

**Weir, Graham** *gweir@lindenwood.edu*  
Lindenwood University

**Weiss, Cynthia** *cweiss@colum.edu*  
Columbia College-Chicago

**Wellen, Lauren** *lauren.wellen@cuchicago.edu*  
Concordia University-Chicago

**Wheatley, Vicki** *vickiwheatley@sbcglobal.net*  
Ashland University

**Wilberschied, Lee I.** *wilberschied@csuohio.edu*  
Cleveland State University

**Wilkins, Elizabeth** *ewilkins@niu.edu*  
Northern Illinois University

**Williams, Tiffany R.** *tiffany.williams1982@gmail.com*  
Cleveland State University

**Wingfield, Tuwana T.** *twingfi@ilstu.edu*  
Illinois State University

**Wisdom, Sherrie** *swisdom@lindenwood.edu*  
Lindenwood University

**Wynn, Sherri** *sherri.wynn@indwes.edu*  
Indiana Wesleyan University

**Xu, Deyu** *dx296905@ohio.edu*  
Ohio University

**Young, Teresa** *youngt3@xavier.edu*  
Xavier University

**Yu, Hanbing** *crystalyu874@gmail.com*  
Miami University

**Zaleski, Diana Janet** *DZaleski07@gmail.com*  
Northern Illinois University

**Zhang, He** *hhan26@126.com*  
Liaoning Normal University

**Zhang, Xiaowei** *zhangx12@muohio.edu*  
Miami University

**Zhao, Lu** *zhaol4@muohio.edu*  
Miami University

**Zhao, Xi** *zhaox3@muohio.edu*  
Miami University

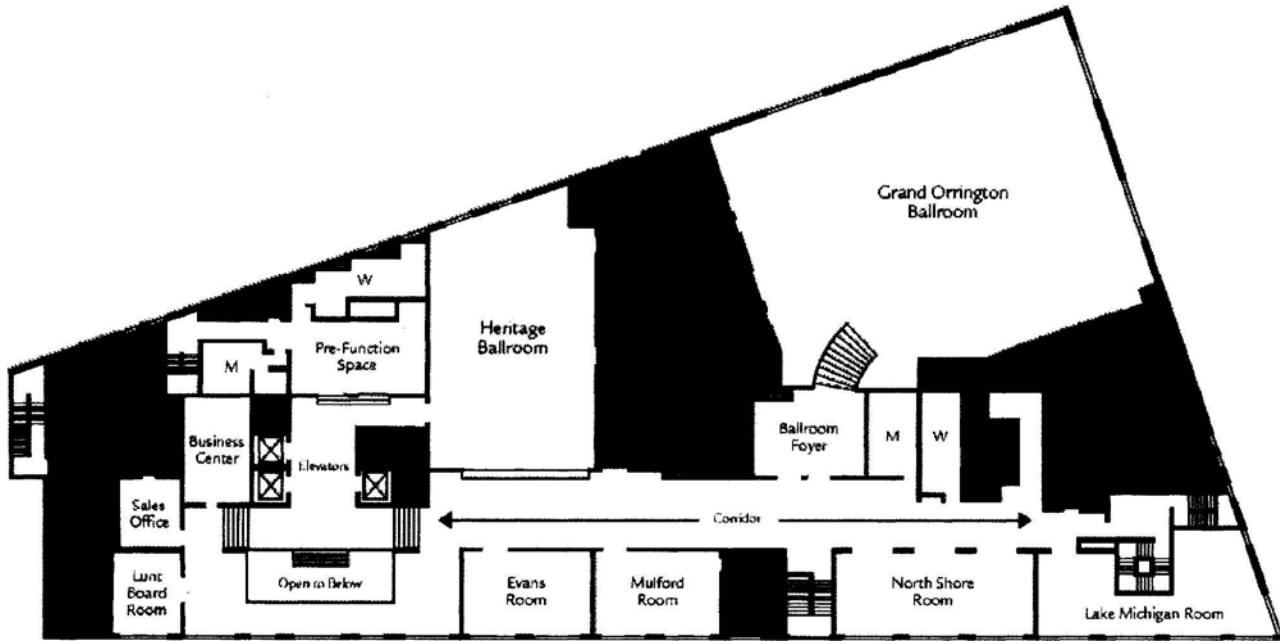
**Zigler, Ted** *ted.zigler@wright.edu*  
Wright State University

**Zimmerman, Judith** *judithz@bgsu.edu*  
Bowling Green State University

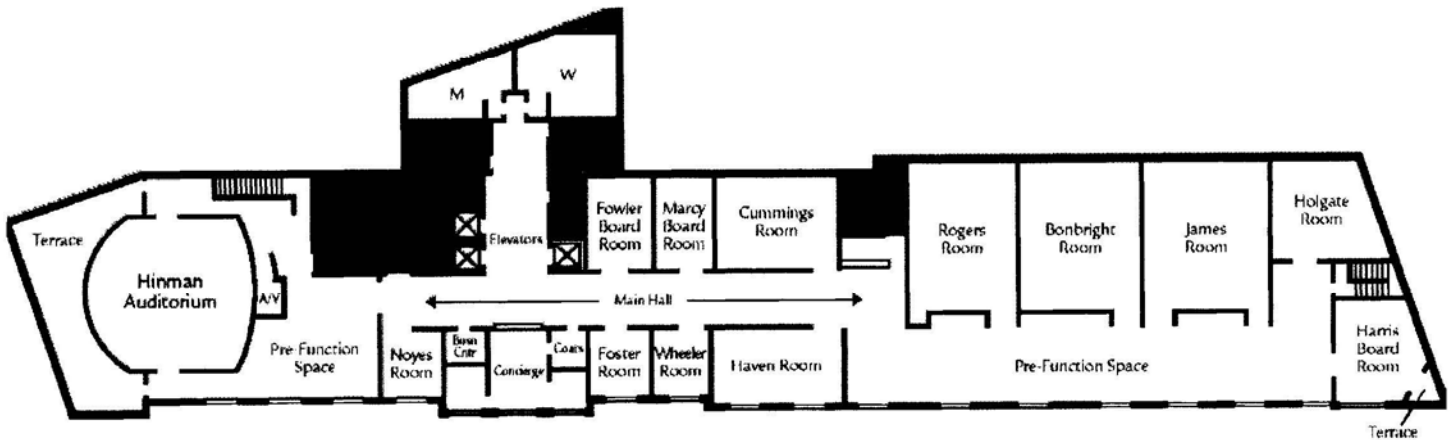
**Zygiel, Miranda** *miranda.zygiel@snc.edu*  
Saint Norbert College

# Hotel Orrington

## Second Floor



## Conference Center 9<sup>th</sup> Floor



## 2012 MWERA Conference At-a-Glance

<i>Wednesday November 7, 2012</i>			
<b>LOCATION</b>			
<b>TIME</b>	<b>Bonbright</b>	<b>Cummings</b>	<b>Harris Board Room</b>
<b>2:00 PM</b>	Laughing and Learning: An Alternative to Shut up and Listen	No Assembly Required: Methods and Materials for P-Project Policy Work	
<b>4:00 PM</b>	Using Microsoft® Excel to Analyze Survey Data	Using Short, Humorous Videos (and Research) to Enhance Teaching	
<b>6:00 PM</b>	An Introduction to R: The Basics	Design Literacy for Non-Designers: Experience the Fundamentals of Design Practice to Enhance Curriculum Development and Content Delivery	

**Thursday November 8, 2012**

**LOCATION**

<b>TIME</b>	<b>Cummings</b>	<b>Hinman Auditorium</b>	<b>Haven</b>	<b>Heritage Ballroom</b>	<b>Holgate</b>	<b>James</b>	<b>Mulford</b>	<b>North Shore</b>	<b>Rogers</b>
<b>8:00 AM</b>	Innovative Approaches to Literacy Curriculum		Changing the Context for Students with Disabilities		Teaching and Learning - Research in Progress	Research in Higher Education	Navigating Parenting: Big Challenges in Schools		Exploring the Use of Structured Academic Supports
<b>9:30 AM</b>		Presidential Address							
<b>10:40 AM</b>	Exploring Contexts, Techniques, and Interventions for College Student Success	Presidential Address Follow-Up	Understanding and Promoting the Development of Undergraduate Learners		Studies of Identity and Self-Efficacy	Challenging Misconceptions at the Onset of Teacher Preparation Programs			Education Policy and Issues in Finance
<b>12:00 PM</b>									
<b>1:40 PM</b>	Engagement and Achievement		New Member and New Student Member Welcome		Innovative Education Methodology	Social and Moral Issues in Education	Implementing Pedagogical Changes to Improve Learning		Evaluation of Arts Integration Projects
<b>3:10 PM</b>	Exploring Social Tolerance Through Survey Research Design and Factor Analysis		Effective Mentoring and Nurturing of Pre-Service Teachers: Addressing Preconceptions in the Early Childhood Classroom		Studies of Student Academic Achievement	Interventions for Improving Attendance and Cognitive Performance	Understanding Undergraduate Education at Private Universities		Shift Happens: What We Learn from Teacher Leaders
<b>4:40 PM</b>	Preparing Culturally Responsive Teachers				Division L Research in Progress	Real World Issues in Education Informed by Research Methodology	Examinations of School Achievement		
<b>6:00 PM</b>				President's Cracker Barrel Social					



**Friday November 9, 2012**

**LOCATION**

<b>TIME</b>	<b>Cummings</b>	<b>Grand Ballroom</b>	<b>Haven</b>	<b>Hinman Auditorium</b>	<b>Holgate</b>	<b>James</b>	<b>Mulford</b>	<b>North Shore</b>	<b>Rogers</b>
<b>8:00 AM</b>	Easing Transitions and Crises for Adolescents		Initiatives for Educational Improvement		Promoting Student Success in Graduate Programs	Motivation and Support to Improve Instruction	Ethnic Issues in School and Institution	Introduction to R: Monte Carlo Simulation	Current Issues in Education Policy
<b>9:30 AM</b>						MWERA Business Meeting			
<b>10:40 AM</b>	Division H Meeting		Division F Meeting		Division K Meeting	Division J Meeting	Division A Meeting	Division C Meeting	Division E Meeting
<b>11:20 AM</b>	Division H Meeting		Division L Meeting		Division B Meeting	Division J Meeting	Division G Meeting	Division I Meeting	Division D Meeting
<b>12:00 PM</b>		Luncheon Keynote Address							
<b>1:40 PM</b>	Innovative Curriculum in Early Childhood and Middle School	Follow-Up Discussion from the Luncheon Keynote Address	Student Learning and Creativity		Correlates of Cognitive Performance and Attitudes in Various Cultural Contexts	Counseling Interventions to Enhance Student Well-Being and Success			Education Changes World
<b>3:10 PM</b>	Supporting Students with Various Cultural Backgrounds to Succeed		Teacher Induction: Professional Development for the Newbie		Evaluation Research in Progress	The Impact of Institutional Climate		Evidence, Attitudes, and Predictors of Leadership	Perceptions of Teachers and Different Instructional Approaches as Seen by Others in the Educational Community
<b>4:40 PM</b>	Improving Instruction for College Readiness		Valedictorians and Delinquents: Can Movies Influence the Success, Failure, and Incarceration of Young American Adults?		University Partnerships: What Does that Really Look Like?	Comparison of Various Approaches to Program Evaluation: K-12 School Programs	Mid-Western Educational Researcher Journal Reviewers' Session		Research in Progress in Teacher and Teacher Education
<b>5:20 PM</b>								MWERA Division Chair Meeting (Orientation and Conference Feedback)	
<b>6:00 PM</b>						Voices of Young Latina Mothers			

***Mid-Western Educational Researcher***  
**Call for Manuscripts**  
**2012-2013**

*Mid-Western Educational Researcher* is a peer-reviewed scholarly journal that publishes book reviews, point-counterpoints, and articles related to educational issues, practice, and research. Although the journal considers work based on action research, this work must be relevant to MWER readership and demonstrate rigor according to standard research conventions and practices. Membership in MWERA is not required to submit a manuscript for review. If your manuscript is accepted for publication, membership in MWERA is required. *MWER* (ISSN 1056-3887) is published quarterly by Mid-Western Educational Research Association through The Ohio State University. Additional special issues are published as needed.

The journal is inviting manuscripts for review not submitted for consideration or published elsewhere in the following four sections:

***Book Reviews***

---

Reviews of newly released or forthcoming books or other media (e.g., film, documentary, blog, software program) are of interest to *MWER* readership. Reviews should include: a complete citation in APA format, a rationale for why a review of the book or media is warranted, a summary of the book or media, an analysis of strengths and weaknesses, and a statement about the significance of the book or media for educational researchers and/or practitioners. A brief summary of the reviewer's background and reasons for interest in the book or media should be included in a separate paragraph. Reviews should be between 5-10 pages. Questions regarding this section should be directed to Susan Kushner Benson at [snk@uakron.edu](mailto:snk@uakron.edu).

***Point-Counterpoint***

---

In this section issues of educational, pedagogical, or methodological significance will be explored from different viewpoints. Submissions should include two related manuscripts. The author(s) of the first manuscript presents a point of view on an issue and the author(s) of the second manuscript provides a different point of view on the same issue. To submit an idea for the Point-Counterpoint section, please submit a short proposal outlining the topic to be discussed, its significance, and who will be writing the point and counterpoint. Once the proposal is accepted, the point and counterpoint must be submitted as one document to the Editors within 60 days for peer review. Each manuscript should be no more than 15 pages in length including the title page and references. Questions regarding this section should be directed to Sandra Spickard Prettyman at [ssandra@uakron.edu](mailto:ssandra@uakron.edu).

***Research***

---

This section seeks research-based manuscripts addressing diverse issues in education. The journal does not subscribe to any particular methodology, and publishes quantitative, qualitative, mixed methods, and meta-analysis studies. Manuscripts should include an abstract of 150 words or less and be no more than 30 pages in length including title page, abstract, references, tables, and figures. All tables and figures must be in a workable text format. Questions regarding this section should be directed to Xin Liang at [liang@uakron.edu](mailto:liang@uakron.edu) or Jennifer Milam at [jenn.milam@uakron.edu](mailto:jenn.milam@uakron.edu).

***Graduate Student Scholarship***

---

This section is devoted to publishing graduate student research, literature reviews, and theoretical and methodological discussions. The journal does not subscribe to any particular methodology, and publishes quantitative, qualitative, mixed methods and meta-analysis studies. To submit a work to this section, the graduate student must be the sole or primary author of the work and must be a graduate student at the time of submission. Verification of graduate student status will be required if the manuscript is accepted for publication. Manuscripts should include an abstract of 150 words or less and be no more than 30 pages in length including title page, abstract, references, tables, and figures. All tables and figures must be in a workable text format. Questions regarding this section should be directed to Kristin Koskey at [koskey@uakron.edu](mailto:koskey@uakron.edu).

## General Formatting Guidelines

All submissions must follow the following set of guidelines:

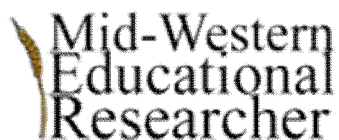
- All submissions must be a WORD document
- Inclusion of a title page consisting of the author's name, affiliation, address, e-mail, phone, and fax. This information should ONLY be provided on the title page.
- Headings, citations, tables, digital object identifier names (doi; see ch. 7.01), and figures should conform to the *Publication Manual of the American Psychological Association* (6th ed.)
- All text should be double spaced in 12-point Times New Roman font (tables can be in no less than 10-point font)
- 1<sup>1/2</sup> margins on all sides
- 3-5 suggested keywords
- If human subjects were used, provide a statement indicating IRB approval

**Submit all materials via e-mail to:**

[mwer@uakron.edu](mailto:mwer@uakron.edu)

The subject line must include MWER followed by the section submitting to (e.g., MWER Book Review). Submissions will be subjected to a peer review process.

All manuscripts will be acknowledged electronically upon receipt. Please note that authors are responsible to submit manuscripts that are free of grammatical and mechanical errors. Manuscripts will be initially screened for format and fit. Appropriate manuscripts will be subjected to blind peer review. Reviews take approximately 4-8 weeks from the time of submission. The Editors reserve the right to make minor modifications to produce a more concise and clear article. Authors acknowledge by virtue of their submission to the journal that they will consent to have their work available internationally through the EBSCO portal, as per agreement with MWERA.



Non-profit postage paid at Columbus, Ohio, with permission of David Andrews, Dean, College of Education and Human Ecology, The Ohio State University.  
Send address change to: Aimin Wang at [wanga@muohio.edu](mailto:wanga@muohio.edu)

# GIVE A GIFT MEMBERSHIP

---

## The Mid-Western Educational Research Association

I am providing a one-year gift membership to a colleague, student, or friend. If this is a student, I am herein verifying student status. I have filled in the recipient's contact information and my information. I have enclosed a check, made out to MWERA, for \$60 for a professional membership, or \$30 for a student membership, or \$30 for a retired membership.

**Please mail this to: Gordon Brooks, MWERA Executive Director, PO Box 702, Athens, OH 45701**

Recipient's Contact Information:

Name \_\_\_\_\_

Address \_\_\_\_\_

City, State, Zip Code \_\_\_\_\_

Affiliation \_\_\_\_\_ Email \_\_\_\_\_

Gift is given by:

Name: \_\_\_\_\_

Email: \_\_\_\_\_