

# **MWERA 2014 Conference Program**

November 12-15, 2014

Hilton Orrington Hotel

Evanston, Illinois

**[www.mwera.org](http://www.mwera.org)**



Ryals School of Public Health Building- University of Alabama at Birmingham

# MWERA 2014 Conference Program

## Table of Contents

<b>Welcome to MWERA 2014</b>	<b>3</b>
<b>Conference Events and Highlights</b>	<b>5</b>
<b>General Information</b>	<b>6</b>
<b>MWERA Leadership</b>	<b>9</b>
<b>Proposal Reviewers</b>	<b>12</b>
<b>Conference Registration and Hotel Reservation</b>	<b>14</b>
<b>General Guidelines</b>	<b>15</b>
<b>Conference Registration</b>	<b>16</b>
<b>Hilton Orrington Hotel Reservations</b>	<b>17</b>
<b>Directions to the Hilton Orrington Hotel</b>	<b>18</b>
<b>Chronological Listing of Sessions</b>	
<b>Thursday</b>	<b>20</b>
<b>Presidential Address (David Walker, Northern Illinois University)</b>	<b>23</b>
<b>Division Chairs &amp; Co-Chairs Luncheon</b>	<b>23</b>
<b>President's Cracker Barrel Social</b>	<b>29</b>
<b>Friday</b>	<b>30</b>
<b>MWERA Poster Session</b>	<b>32</b>
<b>MWERA Division Association Council Breakfast Meeting</b>	<b>33</b>
<b>MWERA General Business Meeting</b>	<b>33</b>
<b>Keynote Address (Dr. Simone Conceição)</b>	<b>34</b>
<b>Saturday</b>	
<b>MWERA Board of Directors' Meeting</b>	<b>39</b>
<b>References</b>	
<b>Index of Session Participants</b>	<b>40</b>
<b>Cross Index to Session Sponsors</b>	<b>42</b>
<b>Subject Index</b>	<b>44</b>
<b>Address Directory of Conference Participants</b>	<b>46</b>
<b>Hotel Floor Plan</b>	<b>52</b>
<b>Guidelines, Responsibilities, &amp; Evaluation</b>	
<b>Expectations of Presenters</b>	<b>53</b>
<b>Responsibilities of Session Chairs</b>	<b>54</b>
<b>Responsibilities of Session Discussants</b>	<b>55</b>
<b>Copy of Session Report for Chairs and Discussants</b>	<b>56</b>

## *Welcome to MWERA 2014!*

### The Changing Roles of Institutes of Learning: The Transformative Power of Technology



On behalf of the Board of Directors, officers, and Program Committee, I am pleased to welcome you to the 2014 Annual Meeting of the Mid-Western Educational Research Association (MWERA). With the hard work of the conference planning committee we have put together a program featuring insightful, challenging, and exciting themes for this year. The variety of choices participants have range from keynote addresses and invited speakers. Additionally, we have a thought provoking and quality array of research-based papers, workshops, poster sessions, alternative sessions, best practices fora, special events, research in progress, and symposia, all of which went through a rigorous peer-review process. I wish to offer my sincere gratitude to all chairs and co-chairs, reviewers, conference chairs and discussants, who have made this program possible.

The conference will feature dynamic speakers of interest to both researchers and practitioners. Teachers, administrators, and other school personnel are especially invited to come and share their school-based research and experiences at the 2014 MWERA conference. Noteworthy are the so many varied topics and session formats that fit the theme of the conference: ***“The Changing Roles of Institutes of Learning: The Transformative Power of Technology.”***

The growing trend in online education provides the promise of more convenience and wider access for potential learners. Technology has changed the way we communicate and cyber-based resources have the potential to revolutionize our ability to educate and transform the way students learn. The transition from a brick-and-mortar classroom to cyberspace course implementation presents challenges and opportunities for the online experience and considerations for creating online educational resources. Yet, questions remain about whether online education in its current state actually “delivers” on these potential promises and how these issues impact the future of the educational process.

Education has been the means for empowerment for developing and building capacities of individuals, institutions, and communities to make them part of the main stream society. Access to equitable and affordable educational opportunities has gradually enhanced opportunities for children and youth, yet we have more work to do. The conference will create the space for dialoging, discussing and sharing our research, experiences, thoughts, ideas and work about the theme within the broad context of our educational systems, organizations, and communities. MWERA would encourage submissions from a range of intellectual, practical and activist perspectives for a meaningful dialogue and dissemination of high quality research. The various themes unifying the educational discipline would provide insights into theory, practice, methodology or field work on contemporary research practices.

We will continue early Thursday morning at 8am with a variety of sessions. We are honored to host **Dr. David Walker**, Professor of Educational Technology, Research, and Assessment at Northern Illinois University, for his Presidential Keynote Address – which will be delivered on Thursday, November 13 at 11:00 AM in the Grand Ballroom

We are extremely privileged to host the Luncheon Keynote Address, which will feature **Dr. Simone Conceição**. She is Professor for the University of Wisconsin-Milwaukee (UWM) School of Education Department of Administrative Leadership and holds a Ph.D. in Adult Learning and Distance Education from the University of Wisconsin-Madison. Her address will focus on the Conference Theme and is titled “**Educate, Motivate, and Support: Meeting the Needs of 21<sup>st</sup> Century Tech-Savvy Learners,**” the Keynote Address will be held Friday, November 14 at 12:00 PM in the Grand Ballroom. Dr. Conceição will be available after the address to have a follow-up discourse with interested participants

I invite you to renew and establish friendships as well as enrich your professional knowledge. Please visit with me during the conference if there is anything that I can do to enhance your experience.

Cordially,

T. Mark Beasley, Ph.D.  
MWERA Vice-President and 2014 Program Chair

## *Conference Events and Highlights*

Wednesday at 12 noon On-site registration begins on the **9th floor (foyer area)** of the Hilton Orrington Hotel.

On Thursday at 11:00 AM, **Dr. David Walker** will present his Presidential Keynote Address in the Grand Ballroom Auditorium. Dr. Walker will be available for further discussion following the Keynote Address.

The **MWERA Association Council** will hold its annual meeting over breakfast on Friday at 8:00 AM in the Holgate Room. All current Association Council members are expected to attend.

The highlight of Thursday evening will be the **President's Cracker Barrel Social**, scheduled from 6:00 to 8:00 PM in the Hinnman Foyer. Your host will be the current president of MWERA, **Dr. David Walker**. The social is a great way to unwind and catch up with your colleagues. There will be a cash bar for members 21 years of age and older.

Everyone available is encouraged to attend the annual **MWERA General Business Meeting** scheduled on Friday from 9:30 to 10:30 AM in the Grand Ballroom. President David Walker will preside over an agenda of issues critically important to the association. Your input is both needed and welcome! Please note that as a result of the importance of the all-members meeting no other session is scheduled during this period to allow all members to be able to attend.

Another unique feature of this year's conference is the stand alone poster session on Friday morning at 8am. To ensure maximum participation in the poster sessions no other session was scheduled concurrently with it. All the poster sessions of the Divisions will take place at the same time and all conference participants are encouraged to be in attendance. Come to support, interact and learn from the wonderful array of poster presentations at the MWERA 2014 conference.

In an effort to keep members from having to choose between Division meetings and presentation sessions, most **Division Business Meetings** have been scheduled between 10:40AM to 11:50 on Friday morning. While the business meetings are shorter chairs and co-chairs are expected to conduct these meeting to either elect new chairs and co-chairs or confirm current ones. They are also expected to elicit the support of members of the Division to explore ways of increasing membership and other ideas about growing the Division. Three Divisions--namely, D, H & L have elected to have invited speakers in their Business Meeting sessions, we have therefore provided them extra time (1 hour 20 minutes) at different times to enable them accommodate the speakers as well as carry out regular Division business. Remember that participation in a Division is an important part of MWERA membership. Please acquaint yourself with some of your colleagues in a Division and become active, including helping to recruit new members and assisting in the planning of next year's conference.

At the **Friday Luncheon Keynote Address**, we are honored to have **Dr. Simone Conceição** as our speaker. Dr. Conceição's address is titled "**Educate, Motivate, and Support: Meeting the Needs of 21<sup>st</sup> Century Tech-Savvy Learners.**" *Remember, you must pre-register for the conference in order to be guaranteed a seat at the luncheon.* Following the luncheon, Dr. Conceição will be available for questions in the Grand Ballroom beginning at 1:40 PM.

Division Chairs and Co-Chairs should attend the **Division Chair Luncheon Meeting** on Thursday at 12:00 PM in the Holgate Room.

**Dr. Mark Beasley**, the 2014 Program Chair, and the entire organization are very interested in your feedback. Please complete a conference evaluation so that necessary changes can be made for the 2015 Annual Meeting in Evanston, IL.

## *General Information*

The 2014 Annual Meeting of the Mid-Western Educational Research Association will be held from Wednesday, November 12 to Saturday, November 15 at the Hilton Orrington Hotel in Evanston, Illinois. On Wednesday, conference registration will begin at 12:00 PM. Thursday and Friday will consist of research papers presented in a variety of format sessions, as well as other workshops, invited speakers, meetings, and social events. The conference will conclude following the Board of Directors' meeting at 12:00 PM on Saturday.

**Meeting Registration** is expected of everyone attending or participating in the 2014 Annual Meeting of the Mid-Western Educational Research Association. Advance payment for full registration for the meeting, as well as current MWERA membership dues, is expected of everyone. Registrants are provided a MWERA-2014 name tag, which must be worn at all times during the conference. Those planning to attend MWERA-2014 are strongly encouraged to pre-register for the conference and the pre-conference workshops and also make hotel reservations as soon as possible. Both conference pre-registrations and hotel reservations must be received by October 12, 2014. Conference registrations after October 16th may not be received in time for processing. On-site payment in the form of cash or a personal check will be required. **On-site registration and packet pick-up will be available at the registration desk on the 9th floor (foyer area) of the Hilton Orrington Hotel at the following times:**

<b>Wednesday, November 12: 4:00 PM - 7:00 PM</b>
<b>Thursday, November 13: 7:00 AM - 6:00 PM</b>
<b>Friday, November 14: 7:00 AM - 12:00 PM</b>

**Membership** in the Mid-Western Educational Research Association provides reduced conference registration fees and access to the *Mid-Western Educational Researcher*, the official MWERA publication. Attendees are encouraged to join. **Conference participants must be paid members for 2014.**

### **Expectations of Presenters**

All persons, including graduate students, presenting at the 2014 Annual Meeting are expected to be **members in good standing** and **to register for the full meeting**.

Presenters whose papers have been accepted to a session with a Session Chair and/or Session Discussant are **expected to upload** a completed version of their conference paper through the MWERA website **no later than October 16, 2014**. Papers not uploaded to the website by this date may be dropped from the program. Presenters should provide copies of their papers in either paper or electronic form to attendees at their sessions.

LCD projectors and screens will be provided by MWERA in presentation rooms. Presenters needing additional computer or audio-visual equipment must make their own arrangements for such equipment (rental from the hotel may be possible at the presenter's own expense).

MWERA reserves the right to reproduce and distribute

summaries and abstracts of all accepted proposals, including making such works available in a printed

Program Abstract, through the MWERA website, and in press releases promoting the Annual Meeting and the organization. *As a condition of acceptance, all authors of papers accepted to the 2014 Annual Meeting explicitly grant MWERA the right to reproduce their work's summary and/or abstract in these ways.* Such limited distribution does not preclude any subsequent publication of the work by the author(s).

## Session Formats

### *Paper Presentation*

Paper sessions are intended to allow presenters the opportunity to make short, relatively formal presentations in which they summarize their papers to an audience. Typically, three to four, and in some instances two, individual papers dealing with related topics are grouped into a single session running 1 hour and 20 minutes. Each paper presentation is allowed approximately 15 minutes (depending on the number of presentations in a given session) to present the highlights of the paper. A Session Discussant is also allowed 10-15 minutes, following all papers, for comments, synthesis, and/or constructive feedback. A Session Chair moderates the entire session. Ideally, presenters should provide complete copies of their papers to all interested audience members or, if not feasible, should bring a one-page summary of the study highlights along with their contact information.

All presenters for individual paper sessions are expected to upload their completed paper(s) through [www.mwera.org](http://www.mwera.org) by **October 16th**.

Discussants who do not have complete papers by the due date may elect not to include that paper in the discussion.

### *Poster*

Poster sessions are intended to provide opportunities for interested individuals to participate in a dialogue with the presenter(s). Presenters are provided an area in which to display a table-top poster, ancillary handouts, or other audio/visual materials. Ideally, presenters should provide complete copies of their papers to all interested audience members or, if not feasible, should bring a one-page summary of the study highlights along with their contact information.

### *Symposium*

A symposium is intended to provide an opportunity for examination of specific problems from a variety of perspectives. Symposium organizers are expected to identify the topic or issue, identify and ensure the participation of individual speakers who will contribute to the session, prepare any necessary materials, and facilitate the session. A Session Chair moderates the entire session. It is suggested, that the speakers or symposium organizer will provide interested individuals with one (or more) papers relevant to and/or drawn from the symposium.

### *Workshop*

Workshops are intended to provide an extended period of time during which the workshop leader helps participants develop or improve their ability to perform some process (e.g., how to provide clinical supervision or conduct an advanced statistical analysis). Organizers may request from 1 to 2 hours, and are responsible for providing all necessary materials for participants. Most workshops are scheduled for Wednesday afternoon and evening, although others may be scheduled throughout the conference.

### *Alternative Session*

The form, topics, and format of alternative sessions are limited only by the imagination and creativity of the organizer. These options are intended to afford the most effective method or approach to disseminating scholarly work of a variety of types. The organizer of alternative sessions is responsible for all major participants or speakers, developing and providing materials, and chairing the session.

### ***Research in Progress***

Research in Progress is a new session format this year that affords individual researchers, particularly graduate students and early-career scholars, the opportunity to submit evidence-based works that are not fully realized and/or completed, but have enough progression and fidelity to warrant dissemination and discussion among peers. A Session Discussant is also allowed 10-15 minutes, following all papers, for comments, synthesis, and/or constructive feedback. A Session Chair moderates the entire session.

### ***Best Practices Forum***

The Best Practices sessions provide opportunities for individuals or groups to present “best” or “promising” practices impacting both K-12 and higher education. These sessions highlight unique and innovative programs that have demonstrated promise for improving and enhancing educational practice. Presenters will be grouped by similar topics to facilitate discussion among the groups and audience.

### ***MWERA Distinguished Paper Award***

Each year the State and Regional Educational Research Association (SRERA) special interest group of American Educational Research Association (AERA) invites its member state and regional affiliates to each present one distinguished paper at the annual spring AERA meeting. These papers are automatically accepted for presentation and do not undergo additional review. MWERA will recognize one overall distinguished paper from its exemplary manuscripts to submit for presentation at AERA, which is being held in Chicago in spring 2015. The award recipient is expected to present the paper at AERA and will receive a \$150 stipend to defray the cost of registration. See. [www.mwera.org](http://www.mwera.org) for more details.



**The Hilton Orrington Hotel**



## **MWERA Leadership**

### **MWERA Board of Directors**

- **President:** David A. Walker, Northern Illinois University [dawalker@niu.edu](mailto:dawalker@niu.edu)
- **President-Elect:** Francis Godwyll, University of North Florida, [francis.godwyll@unf.edu](mailto:francis.godwyll@unf.edu)
- **Vice President:** T. Mark Beasley, University of Alabama Birmingham, [mbeasley@uab.edu](mailto:mbeasley@uab.edu)
- **Vice President Elect:** Aimin Wang, Miami University, [wanga@muohio.edu](mailto:wanga@muohio.edu)
- **Vice President Elect Elect:** Kate S. Akers, Kentucky Center for Education and Workforce Statistics, [Kate.Akers@ky.gov](mailto:Kate.Akers@ky.gov)
- **Secretary:** Tracey Stuckey-Mickell, The Ohio State University, [stuckey-mickell.1@osu.edu](mailto:stuckey-mickell.1@osu.edu)
- **Immediate Past President:** Cynthia Campbell, Northern Illinois University, [ccampbell@niu.edu](mailto:ccampbell@niu.edu)
- **Member-at-Large:** Dustin C. Derby, Palmer College of Chiropractic, [dustin.derby@palmer.edu](mailto:dustin.derby@palmer.edu)
- **Executive Director (ex officio):** Gordon Brooks, Ohio University, [mwera.ed@gmail.com](mailto:mwera.ed@gmail.com)
- **Historian (ex officio):** Tom Cody, Western Illinois University, [tj-cody@wiu.edu](mailto:tj-cody@wiu.edu)
- **Webmaster:** Thomas J. Smith, Northern Illinois University, [tjsmith@niu.edu](mailto:tjsmith@niu.edu)

### **Editorial Team 2013-2016 (ex officio):**

- **Debra Miretzky**, Western Illinois University, [D-Miretzky@wiu.edu](mailto:D-Miretzky@wiu.edu)
- **Sharon Stevens**, Western Illinois University, [sr-stevens2@wiu.edu](mailto:sr-stevens2@wiu.edu)
- **Katrina Daytner**, Western Illinois University, [km-daytner@wiu.edu](mailto:km-daytner@wiu.edu)
- **Sarah Schoper**, Western Illinois University, [se-schoper@wiu.edu](mailto:se-schoper@wiu.edu)

### **2012-2014 Association Council Members**

- **Delane Bender- Slack**, Xavier University
- **Katie Cripe**, Youngstown State University
- **John Hitchcock**, University of Indiana Bloomington
- **Theodore J. Kowalski.**, University of Dayton
- **Cheu-jey Lee**, Indiana University- Purdue/University of Fort Wayne
- **Real Moore**, The Ohio University
- **Larry Tinnerman**, Indiana State University

### **2013-2015 Association Council Members**

- **Kate S. Akers**, Kentucky Center for Education and Workforce Statistics
- **Gary Daytner**, Western Illinois University
- **Janet Holt**, Illinois Education Research Council
- **Ting Li**, Miami University Ohio
- **Timothy Sheldon**, University of Minnesota
- **Sharon Stevens**, Western Illinois University
- **Angelina Stuckey**, Oswego State University

### **2014-2016 Newly Elected Association Council Members**

- **Tawanda Gipson**, Northern Illinois University
- **Han Han**, Miami University
- **Marsha Lewis**, Ohio University
- **Wenshu Li**, University of Tennessee
- **Greg Montalvo**, Western Illinois University
- **Penny Sobeleski**, Bowling Green State University
- **Brandelyn Tosolt**, Northern Kentucky University
- **Winston Vaughan**, Xavier University

## **2014 MWERA Program Committee**

### **Program Chair**

T. Mark Beasley, University of Alabama Birmingham, [mbeasley@uab.edu](mailto:mbeasley@uab.edu)

### **A - Administration, Organization, & Leadership**

Division Chair: Mohamed Nur-Awaleh; Illinois State University  
[manuraw@ilstu.edu](mailto:manuraw@ilstu.edu)

### **B - Curriculum Studies**

Division Chair: Eurvine Williams; Illinois State University  
[ewillia@ilstu.edu](mailto:ewillia@ilstu.edu)

### **C - Learning & Instruction**

Division Chair: Joe Schroer; Miami University  
[schroerje@miamioh.edu](mailto:schroerje@miamioh.edu)

### **D - Measurement & Research Methodology**

Division Chair: Tracey Stuckey-Mickell; The Ohio State University  
[stuckey-mickell.1@osu.edu](mailto:stuckey-mickell.1@osu.edu)

### **E - Counseling & Human Development**

Division Chair: Elena Lyutykh; Concordia University Chicago  
[Elena.Lyutykh@cuchicago.edu](mailto:Elena.Lyutykh@cuchicago.edu)

### **F - History & Historiography**

Division Co-Chairs:  
Mohamed Nur-Awaleh; Illinois State University  
[manuraw@ilstu.edu](mailto:manuraw@ilstu.edu)

Melissa Pitcock; Illinois State University  
[mepitco@ilstu.edu](mailto:mepitco@ilstu.edu)

### **G - Social Context of Education**

Division Chair: Yikang Wang; Miami University  
[wangy33@miamioh.edu](mailto:wangy33@miamioh.edu)

### **H - Research, Evaluation, & Assessment in Schools**

Division Chair: Spencer Pasero; Fermilab Education Office  
[spasero@fnal.gov](mailto:spasero@fnal.gov)   [pasero@gmail.com](mailto:pasero@gmail.com)

### **I - Education in the Professions**

Division Co-Chairs:  
Penny Soboleski; Bowling Green State University  
[pennys@bgsu.edu](mailto:pennys@bgsu.edu)

Anne George; Saint Xavier University  
[george@sxu.edu](mailto:george@sxu.edu)

***J - Postsecondary Education***

Division Co-Chairs:

Katrina Daytner; Western Illinois University  
[KM-Daytner@wiu.edu](mailto:KM-Daytner@wiu.edu)

Eric Mansfield; Western Illinois University  
[EA-Mansfield@wiu.edu](mailto:EA-Mansfield@wiu.edu)

Brandon Hensley; Illinois State University  
[bohensl@ilstu.edu](mailto:bohensl@ilstu.edu)

***K - Teaching & Teacher Education***

Division Co-Chairs:

Laney Bender-Slack; Xavier University  
[benderslackd@xavier.edu](mailto:benderslackd@xavier.edu)

Teresa Young; Xavier University  
[youngt3@xavier.edu](mailto:youngt3@xavier.edu)

***L – Educational Policy & Politics***

Division Chair: Ting Li; Miami University  
[lit@muohio.edu](mailto:lit@muohio.edu)

## ***Proposal Reviewers***

The 2014 Program Committee wishes to express its appreciation to the following individuals who donated their time to assist in the process of reviewing **205 proposals**

---

### **A**

Acar, Ibrahim, *University of Nebraska-Lincoln*  
Ahwireng, Doreen, *Ohio University*  
Akers, Kate, *Kentucky Center for Education and Workforce Statistics*  
Anandappa, Suzanne, *University of Kentucky*

### **B**

Beasley, Mark, *UAB*  
Brooks, Gordon, *Ohio University*  
Bender-Slack, Delane, *Xavier University*

### **C**

Cody, Tom, *Western Illinois University*  
Chai, Hannah H., *Wright State University*

### **D**

David, Shannon, *North Dakota State University*  
Davidson, Jennifer, *Illinois State University*  
Daytner, Gary, *Western Illinois University*  
Daytner, Katrina, *Western Illinois University*  
Derby, Dustin C., *Palmer College of Chiropractic*  
Dretzke, Beverly J., *University of Minnesota*

### **E**

Eells, Rachel J, *Concordia University - Chicago*

### **G**

George, Anne, *Saint Xavier University*  
Gipson, Tawanda, *Northern Illinois University*  
Godwyll, Francis, *University of North Florida*  
Goffena, Jordan, *Miami University*

### **H**

Ha, Kyong, *Ohio State University*  
Hartlep, Nicholas D, *Illinois State University*  
Hensley, Brandon O., *Illinois State University*  
Holt, Janet, *Illinois Education Research Council*  
Hyde, Andrea Marie, *Western Illinois University*

### **J**

Jaramillo, Nadia V., *Iowa State University*

### **K**

Kandalec, Katherine R., *North Carolina State University & University of Georgia*  
Klostermann, Brenda, *Illinois Education Research Council*  
Kushner Benson, Susan N., *University of Akron*  
Kyei-Blankson, Lydia, *Illinois State University*

### **L**

Lee, Cheu-je, *Indiana University-Purdue University, Fort Wayne*  
Leone, Suzanna, *Washington Local Schools*  
Li, Ting, *Miami University*  
Lichtenberger, Eric, *Illinois Education Research Council*  
Lindsey, Jill L., *Wright State University*  
Lyutykh, Elena, *Concordia University Chicago*

### **M**

Mansfield, Eric, *Western Illinois University*  
McElhiney, Danielle, *Ohio University*  
Miller, Angela Maria, *University of Cincinnati- Blue Ash*  
Miretzky, Deb, *Western Illinois University*  
Montalvo, Greg, *Western Illinois University*

### **N**

Nur-Awaleh, Mohamed A, *Illinois State University*

### **O**

Olive, James, *Ashland University*

### **P**

Pasero, Spencer, *Fermi National Accelerator Laboratory*  
Peterson, Jennifer Lynn, *Illinois State University*  
Pitcock, Melissa, *Illinois State University*

### **R**

Rugutt, John, *Illinois State University*  
Ruhil, Anirudh Virender Singh, *Ohio University*

**S**

Sanders, Khahlia, *University of Cincinnati*  
Schroer, Joseph E, *Miami University*  
Sellen, Joanne Eileen, *Western Illinois University*  
Sharma, Rashmi, *Ohio University*  
Smith, Gabor D., *The University of Akron*  
Smith, Thomas J, *Northern Illinois University*  
Soboleski, Penny, *Bowling Green State University*  
Spudich, Christine, *Southwestern Illinois College*  
Spudich, Dimana, *Southwestern Illinois College*  
Stevens, Sharon, *Western Illinois University*  
Stuckey-Mickell, Tracey, *The Ohio State University*

**T**

Thomas, Elizabeth, *North Carolina State University*  
Thompson, Cynthia Lucretia, *Illinois State University*  
Townsend, Robert T, *Indiana Wesleyan University*

**V**

Vaughan, Winston E, *Xavier University*

**W**

Walker, David A., *Northern Illinois University*  
Wang, Yikang, *Miami University*  
Wilber, Danielle, *Miami university*  
Williams, Eurvine J, *Illinois State University*  
Williams, Nicole, *The University of Findlay*  
Williams, Ron, *Western Illinois University*

**Y**

Yan, Lu., *Iowa State University*  
Young, Teresa, *Xavier University*

## *Conference Registration and Hotel Reservations*

### **Hilton Orrington Hotel**

1710 Orrington Ave, Evanston, IL 60201 (Phone: 847-866-8700)

[www.hotelorrington.com](http://www.hotelorrington.com)

Attending MWERA begins with registering for the conference and reserving a room at the Orrington. These two steps require the completion of two different forms.



**DO NOT SEND YOUR CONFERENCE REGISTRATION TO THE HOTEL OR SEND YOUR HOTEL RESERVATION IN WITH YOUR CONFERENCE REGISTRATION!** This can delay your registration/reservation or result in not being registered for the conference and/or not having a place to stay in Evanston.

### ***Pre-Registration and On-Site Registration***

MWERA allows both pre-registration and on-site registration; however, pre-registration is strongly encouraged. Pre-registrants have first opportunity to enroll in workshops, to purchase materials, and to attend the catered luncheon on Friday. Pre-registration is also less expensive! To pre-register for the 2014 Annual Meeting, complete the form on the following page and return it, with your check or money order for payment in full to incoming MWERA Executive Officer Gordon Brooks.

**Pre-registrations must be postmarked by October 12, 2014 to qualify for the reduced rates.** On-site registration will be available at the registration desk on the 9th floor (foyer area) of the Hilton Orrington Hotel beginning at 12:00 PM on Wednesday, November 12 and continuing through 4:40 PM on Friday, November 14. November 12-15, 2014 is a busy time in Evanston. Hotel space could be tight for those who do not have confirmed reservations. Our conference hotel, the Hilton Orrington, is holding a block of rooms for MWERA attendees; however, they will only hold these rooms until October 16. To ensure that you have a place to stay, please make your reservations with the hotel early. The hotel must receive your reservations by October 12, 2014. **Participants in the conference are strongly urged to register at the Hilton Orrington since this directly affects the amount that MWERA will owe the hotel.** Please help us keep our costs low so that we can continue to provide a high-quality conference.

LCD projectors and screens will be provided by MWERA. **However, as was stated in the call for proposals, presenters who need additional audio/visual equipment, such as a laptop computer, are responsible for providing their own equipment or for arranging to rent these from the hotel at the presenter's own expense.** The hotel has a wide variety of A/V equipment for rent. Contact the hotel directly well before the meeting for your needs, rental pricing, availability, and payment.





**Membership and/or Conference Registration Form**  
**MWERA 2014 Conference dates: November 12-15, 2014**  
 Hilton Orrington Hotel, Evanston, IL

Your Name: \_\_\_\_\_  
 (First Name) (M.I.) (Last Name)

How should your name appear on your name tag? \_\_\_\_\_

What is your work or school affiliation? \_\_\_\_\_

Mailing Address: \_\_\_\_\_  
 (Street) (City, State, Zip)

Your email address: \_\_\_\_\_

Cell/Personal Phone: \_\_\_\_\_ Office Phone: \_\_\_\_\_

Which MWERA Divisions do you want to be listed as a member of? A B C D E F G H I J K L

Is this your first MWERA conference?  Yes  No

**Students:** Please tell us what professor told you about MWERA: \_\_\_\_\_

Provide email for a professor who can confirm your **student status**: \_\_\_\_\_

**2014-2015 MWERA Membership (September 1, 2014 – August 31, 2015)**

- \_\_\_\_\_ Regular member for one year \$ 60
- \_\_\_\_\_ Student member for one year \$ 30
- \_\_\_\_\_ Retired professional membership for one year \$ 30
- \_\_\_\_\_ Lifetime membership \$ 600

**2014 MWERA Conference Registration**

*(you must be an MWERA member to qualify for these rates -- non-members choose appropriate membership type above)*

	<b>Pre-Registration before 10/11/2014</b>	<b>On-Site Registration after 10/11/2014</b>
	Must be mailed or submitted at <a href="http://www.mvera.org">www.mvera.org</a>	Do not mail registration after 10/11/2014
_____ MWERA Professional Member WITH Friday Luncheon	\$ 150.00	\$ 175.00
_____ MWERA Professional Member – NO Friday Luncheon	\$ 140.00	\$ 165.00
_____ MWERA Student/Retired Member WITH Friday Luncheon	\$ 75.00	\$ 105.00
_____ MWERA Student/Retired Member – NO Friday Luncheon	\$ 70.00	\$ 100.00
_____ Additional Guest Ticket for Friday Luncheon	\$ 40.00	\$ 50.00
_____ Donation	\$ _____	\$ _____

**TOTAL Amount Enclosed (Membership & Registration):** \$ \_\_\_\_\_

We need an accurate count for our luncheon. If you are planning to attend the luncheon, please pre-register. If you want to bring someone with you to the luncheon, please buy an additional ticket in advance. If you are coming to the Friday luncheon will you require a vegetarian menu?  Yes  No  Other (explain)

Please see the online store at [www.mvera.org](http://www.mvera.org) for refund policies or to use a credit card. Contact the Executive Director at [mvera.ed@gmail.com](mailto:mvera.ed@gmail.com) if you have any questions. To pay by check or purchase order, mail to:

**MWERA, c/o Gordon Brooks, Executive Director, PO Box 702, Athens, OH 45701**



## Booking a Room at the Orrington

A block of rooms have been reserved for November 12, 2014 – November 15, 2014. The special room rate will be available until October 12, 2014 or until the group block is sold out, whichever comes first.

Booking a reservation from the Orrington site is easy. Go to [www.mwera.org](http://www.mwera.org) and click on the link for “2014 Annual Meeting” and then select the hotel reservation Link.



## *Directions to the Hilton Orrington*

**1710 Orrington Ave.  
Evanston, IL 60201  
Phone: 847-866-8700**

<http://www.hotelorrington.com/directions.html>

### **Driving Directions:**

#### **From Chicago:**

North on Lake Shore Drive to its end at Hollywood. Right onto Sheridan Road. Continue north into Evanston. (There are many turns. Watch for Sheridan Road signs). Left on Dempster Street to Chicago Avenue. Right on Chicago; four blocks to Davis Street. Left on Davis. One block to Orrington Avenue. Right on Orrington. 1-1/2 blocks to Hilton Orrington/Evanston on left.

#### **From Milwaukee and North:**

Take I-94 East to Dempster - EAST exit. Dempster into Evanston. Turn left on McCormick Blvd and right on Church Street. The Hilton is on the corner of Church Street and Orrington Avenue. The main entrance is on Orrington Avenue.

#### **From St. Louis and South:**

Take I-55 North to I-294 North to US 14 East to Dempster. Dempster into Evanston. Turn left on Dodge St. and right on Church Street. The Hilton is on the corner of Church Street and Orrington Avenue. The main entrance is on Orrington Avenue.

#### **From Cleveland and East:**

Take I-94 West to Dempster – exit 37B. Dempster into Evanston. Turn left on Dodge St. and right on Church Street. The Hilton is on the corner of Church Street and Orrington Avenue. The main entrance is on Orrington Avenue.

#### **From Iowa and West:**

Take I-88 East to I-294 North to US 14 East to Dempster. Dempster into Evanston. Turn left on Dodge St. and right on Church Street. The Hilton is on the corner of Church Street and Orrington Avenue. The main entrance is on Orrington Avenue.

### **Airport Driving Directions:**

#### **From O'Hare International Airport:**

From Arrivals Terminal, follow signs "To Chicago". Exit at I-294 North. Exit at Dempster East and continue east on Dempster approximately 15-20 minutes into Evanston. Turn left on McCormick Blvd, take McCormick to Church St and turn right onto Church St. Take Church to Orrington and turn left on Orrington. The Hilton is on the corner of Church & Orrington with the entrance on Orrington Avenue.

#### **To O'Hare International Airport:**

Start out going North on Orrington Ave toward Clark St. Turn Right onto Clark St. Turn Right onto Chicago Ave. Turn Right onto Dempster St. Merge onto I-94 E/ Edens Expy East toward Chicago. Take the Wilson Ave exit, Exit 43A. Turn Right onto W Wilson Ave. Turn Right onto N Cicero Ave/ IL-50. Turn Left onto W Lawrence Ave. Merge onto I-90 W/ Kennedy Expy W. Keep Right to take I-190 W via EXIT 78 toward I-294 S/ Indiana/ O'HARE. Turn Slight Left toward Arrival Terminals. End at 10000 Bessie Coleman Dr Chicago, IL 60666.

**From Midway International Airport:**

Start out going South on S Cicero Ave/IL-50 S toward W 59th St. Make a U-Turn at W 59th St. onto IL-50 N/S Cicero Ave. Merge onto I-55 N/Stevenson Expy N. Merge onto I-94 W via Exit 292A. Merge onto Dempster St. via Exit 37B. Turn Left onto Dodge Ave. Turn Right onto Church St. Turn Left onto Orrington Ave. The Hilton is on the corner of Church & Orrington with the entrance on Orrington Avenue.

**To Midway International Airport:**

Start out going North on Orrington Ave toward Clark St. Turn Right onto Clark St. Turn Right onto Chicago Ave. Turn Right onto Dempster St. Merge onto I-94 E toward Chicago. Merge onto I-55 S/Stevenson Expy S via Exit 53 toward St Louis. Take the Cicero Ave/IL-50 exit, Exit 286, toward Chicago Midway Airport. Turn Left onto IL-50 S/ S Cicero Ave. End at 5700 S Cicero Ave.

**Public Transportation:****CTA:**

Elevated Rapid Transit Train (the "EL") purple line to Davis Street. Three blocks east to Hilton Orrington/Evanston. NOTE: The "Evanston Express" Purple line runs from the Chicago Loop during weekdays at rush hours. At non-rush hour times, take the Red line north to Howard Street. Transfer to the Purple line (same platform).

**METRA Commuter Railroad:**

North Line from Northwestern Station to Davis Street. 3 1/2 blocks east to Hilton Orrington/Evanston. NOTE: If arriving in Chicago via Amtrak. Disembark at Union Station. Exit Union Station and cross street to Northwestern Station.

**Airport Transportation:****Continental Airport Express:**

Shared van service departs O'Hare every 10-15 minutes between 6:00 AM and 11:00 PM. Upon arrival at O'Hare, see ticket agents in baggage claim areas 1E and 3E and ask for a suburban shuttle. Cost is approximately \$31.00 per person and \$54.00 round trip (2nd and 3rd passengers are \$8.00 per person one way). They require a one day advance notice for return trips to O'Hare. Go to <https://airportexpress.hudsonltd.net/res?USERIDENTRY=OHE&LOGON=GO> to make a reservation or call 1-800-284-3826 and use the hotel code "OHE".

**303 TAXI:**

303 Taxis honor special flat rates from the airports to/from the Hilton Orrington less an additional \$2.00 discount by stating the account number, #4097. Should you wish to order a taxi from/to either Chicago O'Hare or Midway Airport please call 303 Taxi at 1-847-256-8294 and give the account number #4097 (Hilton Orrington Evanston) to make your reservation. Evanston rates are currently \$30-\$32 from O'Hare and \$51-\$53 from Midway. Should you be arriving at the airport with or without a reservation, call 303 for pickup upon gathering your luggage at 1-847-256-8294 account #4097 and the dispatcher will give you instructions how to meet your taxi. [www.taxiwithus.com](http://www.taxiwithus.com)

**[Pace Bus service](http://www.pacebus.com/sub/schedules/route_detail.asp?RouteNo=250)** to/from O'Hare airport (\$1.75 for one way trip)

**[http://www.pacebus.com/sub/schedules/route\\_detail.asp?RouteNo=250](http://www.pacebus.com/sub/schedules/route_detail.asp?RouteNo=250)**

**Public Parking Garages in Evanston:** <http://www.cityofevanston.org/parking/lots-garages/>

*Thursday – November 13, 2014*

**T.0800.BO Space and Place: Learning to Teach**

K - Teaching and Teacher Education -Paper Session

Thursday 8:00am to 9:20am 9th Bonbright Room

PRESENTATIONS

- Social Media, Social (In)Justice, and a Critical Sense of Place in Teacher Education  
*Jason R. Harshman*, University of Iowa
- Taking the Foundations to the Students: Online Teaching in Educational Studies  
*Pamela Konkol*, Center for Policy and Social Justice - Concordia University Chicago; *Isabel Nunez*, Center for Policy and Social Justice - Concordia University Chicago; *Andrew Tawfik*, Concordia University Chicago; *Sarah Militz Frielink*, Center for Policy and Social Justice - Concordia University
- The Preparation of Teacher Candidates for K-12 Online Learning Environments: A Case Study  
*Nicole Williams*, The University of Findlay;

Chair *Nicole Williams*, The University of Findlay

Discussant *Jenny Kilgore*, Indiana Wesleyan University, Miami University

**T.0800.JA Engaging in Literacy Practices to Increase Learning**

K - Teaching and Teacher Education Paper Session

Thursday 8:00am to 9:20am 9th James Room

PRESENTATIONS

- A Classroom Data Literacy Intervention for Pre-service Teachers  
*Todd Reeves*, Northern Illinois University; *Sheryl Honig*, Northern Illinois University
- Writing, Self-Efficacy, and Practice  
*Brett M Unruh*, Argosy University

Chair *Cynthia Geer*, Xavier University

**T.0800.HI Leadership roles and Change in P-12 and Higher Education**

A - Administration, Organization, & Leadership Paper Session

Thursday 8:00am to 9:20am 9th Hinman Auditorium

PRESENTATIONS

- Successful Organizational Change and the Role of Transformational Leadership  
*Jennifer Davidson*, Illinois State University
- The Role of the Principal in Cyber Schools  
*Jacob Jefferis*, Secondary Schools
- Principal Dispositions toward the Ohio Teacher Evaluation System  
*Theodore J Kowalski*, University of Dayton; *David Dolph*, University of Dayton
- The roles and responsibilities of Associate Deans in Illinois Public Universities.  
*Mohamed A. Nur-Awaleh*, Illinois State University

Chair *Jennifer Davidson*, Illinois State University

Discussant *John Wilson*, Illinois State University

**T.0800.HV Research in Education in the Professions**

I - Education in the Professions Paper Session  
Thursday 8:00am to 9:20am 9th Haven Room

PRESENTATIONS

- Gender, Length of Service and Practice Setting Among Ohio Disciplined Professional Licenses  
*Edward J. Magiste*, Cleveland State University; *Derek T. Menzies*, Cleveland State University
- Internet Self-Efficacy in a Second Language Learning Context  
Patrick Mose, Ohio University
- A phenomenographic study of variation in experiences of in-service teachers with online learning  
Nasiha Arif, Ohio University
- Science in Early Childhood- Too Much or Too Little?  
*Anne George*, St. Xavier University  
*Tamara Korenman*, St. Xavier University

Chair *Francis E. Godwyll*, University of North Florida

**T.0800.CU Preschool to College: Development and Well-Being in and outside the Classroom**

E - Counseling & Human Development Paper Session  
Thursday 8:00am to 9:20am 9th Cummings Room

PRESENTATIONS

- Making Meaning of God: The Faith Experiences of Preschool Children  
*Mimi Larson*, Concordia University-Chicago
- The Mirror of Erised: Exploring Identity Development in Gifted Students  
*Patricia Farrenkopf*, Concordia of Chicago, New Albany Plain Local Schools
- Language Learning Strategies and Multiple Intelligences: An Investigation of High School Learners of Mandarin Chinese. *Yan Lu*, Miami University; *Yuhan Zhao*, Miami University; *Aimin Wang*, Miami University

Chair *Elena Lyutykh*, Concordia University Chicago,

Discussant *Ting Li*, Miami University

**T.0800.RO How to Utilize Media Technology in Early Childhood Classrooms**

B - Curriculum Studies Best Practices Forum  
Thursday 8:00am to 9:20am 9th Rogers Room

This presentation is to discuss whether it is appropriate to utilize media technology for young children's learning and to share how to utilize media technology for developmentally appropriate practices in early childhood classrooms.

Session Organizer: *Taehyun Kim*, Indiana State University

### **T.0930.RO Attending to Diverse Student Populations**

K - Teaching and Teacher Education Paper Session

Thursday 9:30am to 10:50am 9th Rogers Room

#### **PRESENTATIONS**

- This is Ours and We Must Own It": Teacher Candidates Connecting History to Present Conditions  
*Tamara Coats*, Cleveland State University; *Anne Galletta*, Cleveland State University
- How Are We Doing? Studying an Afterschool Literacy Program  
*Robyn White*, Madisonville Education and Assistance Center; *Teresa Young*, Xavier University;  
*Lorelle Lentz*, University of Cincinnati
- Specific Human Capital: Teacher Retention in Rural Low-income Contexts  
*Grace Kibe*, University of Memphis

Chair/Discussant *Delane Bender-Slack*, Xavier University

### **T.0930.CU Innovative Course and Curriculum Evaluation**

H - Research, Evaluation, & Assessment in Schools Paper Session

Thursday 9:30am to 10:50am 9th Cummings Room

#### **PRESENTATIONS**

- Evaluating a Rural Kentucky University Introduction to Oral Health Course: A Component of the Appalachian Rural Dental Education. *Rachel Harrington*, University of Kentucky; *Joanna Aalboe*, University of Kentucky; *Suzanne Anandappa*, University of Kentucky
- Evaluation of an Arts Integration Program Implemented in Seventh- and Eighth-Grade Core Course Classrooms. *Beverly J. Dretzke*, University of Minnesota; *Maurya Orr*, Columbia College Chicago
- History becomes real for fifth grade students: An evaluation of a place-based curriculum  
*Susan N Kushner Benson*, University of Akron; *Kristin L. K. Koskey*, University of Akron  
*Toivo Motter*, Stan Hywet Hall & Gardens; *Katrina Halasa*, Akron Public Schools

Chair *Cynthia Lucretia Thompson*, Illinois State University

Discussant *Xiongyi Liu*, Cleveland State University

### **T.0930.HA Variety of Approaches to Conducting Research in Curriculum Development**

B - Curriculum Studies Paper Session

Thursday 9:30am to 10:50am 9th Haven Room

#### **PRESENTATIONS**

- Hybrid and Online format of doctoral higher education programs in a Midwestern University  
*Mohamed A. Nur-Awaleh*, Illinois State University; *Simon Taabu*, Illinois State University
- Self and Collective Efficacy Perceptions during Project-Based Learning Implementation  
*Chad Jeremy Clark*, Southwestern City Schools, Ashland University
- The Role of Technology in Second/Foreign Language Learning: Current Perspectives, Methodological Approaches and Assumptions, and Further Research and Implications  
*Nadia V. Jaramillo*, Iowa State University
- Three Cultural Examples of Ethics and Morality Explored Through Folklore Characters  
*Christopher Meidl*, St. Norbert College; *Jessi Nelson*, St. Norbert College

Chair *Ting Li*, Miami University

Discussant *Robert T Townsend*, Indiana Wesleyan University

**T.0930.BO Psychometrics in Practice: Measuring Humanitarian Constructs**

D - Measurement and Research Methodology Paper Session  
Thursday 9:30am to 10:50am 9th Bonbright Room

PRESENTATIONS

- A League of Organizational Justice: Testing Measurement Invariance across Gender and College Union Status. *Dustin C. Derby*, Palmer College of Chiropractic ; *Dan J. Weinert*, Palmer College of Chiropractic
- Rasch analysis of the Social Justice Scale  
*Joseph E Schroer*, Miami University; *William Boone*, Miami University
- Comparing Classical Psychometric and Rasch Modeling Results Using the ICIQ-B  
*Shannon David*, North Dakota State University; *T. Mark Beasley*, University of Alabama at Birmingham; *Danielle McElhiney*, Ohio University

Chair *Anirudh Virender Singh Ruhil*, Ohio University

Discussant *Kate Akers*, Kentucky Center for Education and Workforce Statistics

**T.0930.JA Examining Teaching & Learning: From Technology to Music**

C - Learning and Instruction Research in Progress Session  
Thursday 9:30am to 10:50am 9th James Room

PRESENTATIONS

- Classroom Assessment Self-Efficacy and Performance: Comparing Undergraduates with Pre and Post Student Teaching Experience  
*Cynthia Campbell*, Northern Illinois University
- Technology and Reading Comprehension: Haptic Attention's role Differences between Paper and Digital Mediums. *Kelly Lash*, The Ohio State University
- The Effectiveness of Using Computer-Assisted Instruction on Reading Comprehension for Students with Attention Deficit Hyperactivity Disorders in a Second Language Classroom  
*Areej Ahmed*, Ohio University

Chair *Terry Husband*, Illinois State University

**T.1100.GB Presidential Address**

**International Engagement: Trends and Possibilities**

*David Walker*, Northern Illinois University

MWERA Annual Meeting Special Event

Thursday 11:00am to 12:00pm 2nd Hinman Auditorium

**T.1200.HO MWERA Division Chairs Luncheon**

MWERA Annual Meeting Special Event

Thursday 12:00pm to 1:30pm 9th Holgate Room

### **T.0140.RO Technology in the Classroom**

K - Teaching and Teacher Education Paper Session

Thursday 1:40pm to 3:00pm 9th Rogers Room

#### PRESENTATIONS

- Differentiating Instruction with Technology  
*Cynthia Hayes Geer*, Xavier University
- Mobile Apps in a Language Classroom: MIT App Inventor  
*Patrick Mose*, Ohio University
- Technology Integration in Elementary Classrooms  
*Christopher Meidl*, St. Norbert College; *Katelyn Landerman*, St. Norbert College

Chair *Chad Jeremy Clark*, Southwestern City Schools, Ashland University

### **T.0140.RO Technology and Online Education in Higher Education**

A - Administration, Organization, & Leadership Paper Session

Thursday 1:40pm to 3:00pm 9th James Room

#### PRESENTATIONS

- Covarying Characteristics that Affect Outcomes in Online Classes  
*Shaun Moore*, Oakland University; *Daniel Arnold*, Oakland University; *Nicholas Bongers*, Oakland University
- Critical Connoisseurship: A Case of Facilitating Change in Technology Use in Higher Education  
*Jill L. Lindsey*, Wright State University
- Perceptions of Adult Undergraduate Students Regarding Online Versus Face-to-Face Courses  
*Jennifer Lynn Peterson*, Illinois State University

Chair/Discussant *Mohamed A. Nur-Awaleh*, Illinois State University

### **T.0140.BO Using Technology in Post-Secondary Classrooms**

J - Postsecondary Education Paper Session

Thursday 1:40pm to 3:00pm 9th Bonbright Room

#### PRESENTATIONS

- Blended and Online Doctoral Teaching and Learning: Engaging and Connecting Beyond the Virtual Classroom. *Antonina Lukenchuk*, National Louis University
- Completing the Dissertation: Research Self-Efficacy in Traditional and On-line Environments  
*Suzanne Otte Allen*, Edgewood College; *Sara Jimenez Soffa*, Edgewood College
- Exploratory Study On The Impact Of Mobile Wireless Technologies In Teacher Education Classroom. *Anupama Ghattu*, Indiana State University
- Social capital and online education: The search for friends and community.  
*Thomas Mays*, Miami University

Chair *Sharon Stevens*, Western Illinois University

Discussant: *Eric Mansfield*, Western Illinois University



### **T.0140.CU Novel Approaches to Learning**

C - Learning and Instruction Paper Session

Thursday 1:40pm to 3:00pm 9th Cummings Room

#### PRESENTATIONS

- Lessons from Dystopia: Access to Education Through Technology  
*Rachel J Eells*, Concordia University Chicago; *Trisha Wickland*, Concordia University Chicago
- The Increasing Role of Cyberteaching and E-Learning in US Schools: Are We Meeting the Needs of Traditionally Underserved Students?  
*Judith Jackson May*, Bowling Green State University; *Martha Sears*, Bowling Green State University
- The Windmill Learning Approach: Harnessing the Educational Power of Entrepreneurship  
*Nadia V. Jaramillo*, Iowa State University; *Moonyoung Park*, Iowa State University  
*Tera Lawson*, Iowa State University; *Ana Paula Correia*, Iowa State University  
*Ritushree Chatterjee*, Iowa State University; *Pinar Melek Arpacı*, Instructional Designer

Chair *Ritushree Chatterjee*, Iowa State University

Discussant: *Kelly Lash*, The Ohio State University

### **T.0140.HI Division L Business Meeting with Guest Speakers**

L - Educational Policy and Politics Special Event

Thursday 1:40pm 3:00pm 9th Hinman Auditorium

#### PRESENTATION

- Higher Education Admission Policy in China: The Impact of NCEE (National College Entrance Exam) on the Structural Reform of Education  
*Mei Zhi*, Associate Dean, Beijing Educational Institute (Fengtai)  
*Qunxiong Shi*, Associate Dean, Beijing Educational Institute (Fengtai)  
*Yuan Li*, Academic Provost, Beijing No. 10 Middle School  
*Chang Qu*, CEO Assistant, MindExplorer International, LLC  
*Yuan Sun*, Department Manager, MindExplorer International, LLC  
*Yu Wang*, CEO, MindExplorer International, LLC

### **T.0140.HA Polytomous IRT Modeling: How to Poly!**

D - Measurement and Research Methodology Workshop

Thursday 1:40pm to 3:00pm 9th Haven Room

When assessing a latent trait, the development of quality items for a survey can be a difficult task. The primary goal of survey construction is to construct a survey that is a high quality and demonstrates reliability and validity for the purpose of the survey. Often times, surveys in research have polytomous response options, which requires specific models of Item Response Theory (IRT) analysis. Rasch Rating Scale Model and Partial Credit Model are two common models when polytomous data is involved. The objective of this workshop will be to demonstrate how to deal with polytomous or scale data using Item Response Theory in a free software package, Ministeps

Session Organizers: *Shannon David*, North Dakota State University  
*Danielle McElhiney*, Ohio University

**T.0310.CU Historical Look at Civil Engagement, Adjunct Oppression, Perceptions of Women, and Student Criminal Backgrounds**

F - History & Historiography Paper Session

Thursday 3:10pm to 4:30pm 9th Cummings Room

1927 introduced the Experimental College to launch a radical and new approach to liberal education by fostering civic engagement. “No Classrooms, No Guinea Pigs: The Meiklejohn Experimental College” provides important insights into the struggle. Adjunct professors are examined in “A Brief History of Adjunct Faculty Oppression.” Pressed by financial issues, institutions are challenged by a disconnect between the needs of the body of professors that are labeled “contingent” and the managerial decisions of administrators and institutional power brokers. Taking a feminist approach, “In an Unlikely Place: Roots of Second Wave Feminism Found within Campus Women” examines historical inaccuracies in the perception and depiction of campus women in the decades after World War II. In an era of student consumerism and mandated reporting, institutions must determine proper use of student criminal histories and ensure that justice and equity are not sacrificed in the game of compliance.

**PRESENTATIONS**

- No Classrooms, No Guinea Pigs: The Meiklejohn Experimental College  
*Chad Woolard, Illinois State University*
- A Brief History of Adjunct Faculty Oppression  
*Brandon O. Hensley, Illinois State University*
- In An Unlikely Place: Roots of Second Wave Feminism Found within Campus Women  
*Jon E Gorgosz, Southern Illinois University*
- History’s Influence on the Practice of Student Criminal History Screening  
*Jennie Hemingway, Western Illinois University*

Chair *Melissa Pitcock, Illinois State University*

**T.0310.JA Evaluating Social and Economic Factors in School Settings**

G - Social Context of Education Paper Session

Thursday 3:10pm to 4:30pm 9th James Room

**PRESENTATIONS**

- Economic Indicators and Student Achievement  
*John J. McCreary, Ball State University; Julianne M. Edwards, Ball State University*  
*Gregory J. Marchant, Ball State University*
- Factors contributing to Latino dropout rates: An exploratory narrative study  
*Adriana Trombetta, Cleveland State University; Anne Galletta, Cleveland State University*

Chair *Jason R. Harshman, University of Iowa*

Discussant *Francis E. Godwyll, University of North Florida*

**T.0310.HI Division D Business Meeting: Throwback: Quantitative/Qualitative Debate**

D - Measurement and Research Methodology Special Event  
Thursday 3:10pm to 4:30pm 9th Hinman Auditorium

Division D will host a "throwback" session, where a variety of researchers will revisit the Quantitative/Qualitative Debate. These sessions were popular and garnered lively discussions in years past. This year Division D will approach the debate with a mixed-methods twist.

Chair: *Tracey A Stuckey-Mickell*, The Ohio State University  
Participants: *T. Mark Beasley*, University of Alabama at Birmingham

**T.0310.HA Videagogy: Using Short, Funny Videos to Enhance Learning**

K - Teaching and Teacher Education Workshop  
Thursday 3:10pm to 4:30pm 9th Haven Room

Teachers have been using multi-media for years. Because the Millennials are very connected electronically, the use of digital videos as a teaching tool has proven to be successful. Coupled with brain-based research, the integration of short, humorous videos into a teaching pedagogy has proven successful academically and engages students to create a more positive learning environment. The presentation examines the research and practical applications of videagogy = videos + pedagogy. Research indicates that Videagogy (short, humorous videos used in pedagogy) enhances the teaching quality, learning, and student engagement. Videagogy is a brain-based activity that leverages technology as a resource for learning and enhances the curriculum, instruction, and effectiveness of teachers.

Session Organizer: *Peter M Jonas*, Cardinal Stritch University

**T.0310.RO Measuring Student Growth in Illinois**

H - Research, Evaluation, & Assessment in Schools Best Practices Forum  
Thursday 3:10pm to 4:30pm 9th Rogers Room

The objective of this best practices forum is to introduce teachers, administrators, policy makers, researchers, and faculty to the Performance Evaluation Reform Act (PERA). PERA requires the measurement of student growth for the purpose of educators' performance evaluation (Illinois Administrative Code Part 50, Sub. B, Sec. 50.110). This forum will engage participants in a discussion concerning best practices for classroom assessment, and the process of measuring student growth for the purpose of performance evaluation in Illinois. In addition, materials will be provided to support professional development within schools and universities.

Session Organizer: *Diana Zaleski*, Illinois State Board of Education

### **T.0440.JA Journey of Learning to Teach**

K - Teaching and Teacher Education Paper Session

Thursday 4:40pm to 6:00pm 9th James Room

#### PRESENTATIONS

- The Simultaneity of Beginning Teachers' Practical Intentions  
*Aaron Samuel Zimmerman*, Michigan State University
- Telling Stories: The Impact of Thematic Coherence in Life-Narratives on Novice Teachers' Classroom Management Experiences. *Daryl Dugas*, Northern Illinois University
- How Does Our Learning Benefit Our Teaching? A Self-study of Two ELL Teachers.  
*Edward J. Magiste*, Cleveland State University; *Yang Gao*, Kent State University

Chair *Joanne Sellen*, Western Illinois University

Discussant *Xiongyi Liu*, Cleveland State University

### **T.0440.CU Teacher Compensation, Quality and Teacher Dispositions**

A - Administration, Organization, & Leadership Paper Session

Thursday 4:40pm to 6:00pm 9th Cummings Room

#### PRESENTATIONS

- Teacher Compensation Alternatives  
*Guy Joseph Banicki*, Illinois State University; *Sean O'Laughlin*, Illinois State University
- The Influence of Quality of Teaching and Learning, Personal Involvement of Students, and Self-Efficacy on Student Motivation. *John K. Rugutt*, Illinois State University; *Caroline C. Chemosit*, University of Kabianga; *Molly Clesen*, Illinois State University; *Stephanie DeSpain*, Illinois State University; *Miranda Kinney*, Illinois State University; *Tisa Trask*, Illinois State University
- What Makes a STAR Teacher? Examining the Dispositions of PK-12 Urban Teachers  
*Nicholas D Hartlep*, Illinois State University; *Christopher Hansen*, Illinois State University  
*Sara McCubbins*, Illinois State University; *Guy Joseph Banicki*, Illinois State University  
*Grant Morgan*, Baylor University

Chair: *Guy Joseph Banicki*, Illinois State University

Discussant: *Theodore J. Kowalski*, University of Dayton

### **T.0440.HA Educational Policy Impacted by Assessment: Teachers and Students on An International Scale**

L - Educational Policy and Politics Paper Session

Thursday 4:40pm to 6:00pm 9th Haven Room

#### PRESENTATIONS

- Awareness of Diversity: A Cross-Cultural Comparison of Chinese and American College Students  
*Xin Dong*, Miami University; *Nan Li*, Miami University; *Aimin Wang*, Miami University
- Global Literacy Teacher Education: An Analysis of Policy and Practice in OECD Countries  
*Chyrese Stephanie Wolf*, Chicago State University

Chair *Khahlia Sanders*, University of Cincinnati

Discussant *Jill L. Lindsey*, Wright State University

**T.0440.RO Second Language Learning: Technology & Multicultural Variables**

C - Learning and Instruction Paper Session

Thursday 4:40pm to 6:00pm 9th Rogers Room

**PRESENTATIONS**

- The Transformative Power of Technology: Helping Future TESOL Teachers and EFL Students Improve their Skills.  
*Maria Angelova*, Cleveland State University
- The Role of Technology in Second and Foreign Language Learning  
*Nadia V. Jaramillo*, Iowa State University
- Differences between Reading Achievement in Monolingual and Multilingual Students Based on Preschool Enrollment  
*Alexis E. Ball*, Northern Illinois University  
*Ximena D. Burgin*, Research, Evaluation and Policy Studies, NIU
- Using Two Languages in a Dual Language Classroom  
*Solongo Chuluunbaatar*, University of Illinois

Chair: *Judith Jackson May*, Bowling Green State University

Discussant: *Areej Ahmed*, Ohio University

**T.0600.HF MWERA President's Cracker Barrel**

MWERA Annual Meeting Special Event

Thursday 6:00pm to 8:00pm 9th Hinman Foyer

It is not all work. We learn to relax and socialize even in the midst of heavy academic presentations. All participants are invited to relax and socialize at the President's Cracker Barrel session. Come one come all.

*Friday – November 14, 2014*

**F.0800.JF Division C: Teaching and Learning Poster Session**

C - Learning and Instruction Poster Session

Friday 8:00am to 9:20am 9th James Foyer

**POSTERS**

- A Mixed Method Study of the Relationship between Online Collaborative Learning Activities and Sense of Community in an Online Environment for College Students  
*Ritushree Chatterjee*, Iowa State University  
*Pinar Melek Arpacı*, Instructional Designer
- Asian Parenting Styles and Academic Achievement through the eyes of Chinese Language Teachers  
*Grace H.C. Huang*, Cleveland State University
- Cognitive Validity of a New Reading Motivation Measure for Adolescents  
*Stephen M. Tonks*, Northern Illinois University  
*Aldo Rodriguez*, Northern Illinois University  
*J. Schwartz*, Northern Illinois University  
*Marcia Davis*, Johns Hopkins University
- Comprehensive Materials for Online Educational Psychology Courses Facilitating Learners' Conceptual Construction of Theoretical Implication  
*Yuki Hasebe*, Western Illinois University
- Social Network Role on Peer and Tutor Feedback: An Evaluation  
*Turkan Karakus*, Ataturk University  
*Yasemin Tas*, Ataturk University
- iRespond: Case Studies of Two Teachers' Experiences While Implementing the iPad During Small Group Reading Instruction  
*Terry Husband*, Illinois State University  
*Roland Schendel*, Metropolitan State University of Denver
- Relationship between Autonomy Coaching and Self-Regulated Learning  
*Jordan Goffena*, Miami University

Chair *Joseph E Schroer*, Miami University

**F.0800.JF Division H Poster Session**

H - Research, Evaluation, & Assessment in Schools Poster Session

Friday 8:00am to 9:20am 9th James Foyer

**POSTERS**

- Reasons for Reverse Transfers: In Students' Own Words  
*Brenda Klostermann*, Illinois Education Research Council  
*Eric Lichtenberger*, Illinois Education Research Council  
*Nick Mehner*, Illinois Education Research Council
- Impact of iPads on Pedagogical Strategies for Autistic Learners  
*Brian Zuel*, Indiana State University

**F.0800.HO MWERA Association Council Meeting**

MWERA Annual Meeting Special Event

Friday 8:00am to 9:20am 9th Holgate Room

**F.0800.HA The Changing Social Dynamics at Schools under the Influence of High Technology**

L - Educational Policy and Politics Paper Session  
Friday 8:00am to 9:20am 9th Haven Room

**PRESENTATIONS**

- Digital Bridges and Social Divides: A Case Study in Technology and Inclusive Education  
*Stacy Gherardi, University of Illinois at Chicago*
- Education for sale: How high and low performing charter schools attract parents with their websites  
*Jeremy Luke, The Ohio State University*

Chair *Anirudh Virender Singh Ruhil, Ohio University*  
Discussant *Francis E. Godwyll, University of North Florida*

**F.0800.JA Professional Educators Initiative**

K - Teaching and Teacher Education Best Practices Forum  
Friday 8:00am to 9:20am 9th James Room

This best practice forum proposal describes how a midwestern university responded to the needs of teachers and school administrators in the context of new teacher evaluation requirements. The session will include sharing the teacher evaluation tool and the web-based environment, with a focus on helping to advance a specific classroom competency. This non-credit professional development tool is framed by a coaching model and serves to support teacher professional practice. Data will be shared from both the university and school district administrators' perspective. Data will include participant survey responses as well as school administrator and university perspectives.

Session Organizer *Laura Clarke, Ball State University*  
Participants *Laurie Mullen, Ball State University*  
*Todd Cummings, Fort Wayne Community Schools*  
*Laura Cain, Fort Wayne Community Schools*

**F.0800.HI Teachers and Technology**

K - Teaching and Teacher Education Paper Session  
Friday 8:00am to 9:20am 9th Hinman Auditorium

**PRESENTATIONS**

- University Faculty's Comfort in using Handheld / Mobile Technology to communicate with Students  
*Balaguruprasad Narayanan, Indiana State University*
- The Transformation Process of College Teachers in Creating a Digital Literacy Class in China  
*Lei Zhang, Indiana State University*
- Do One-to-One Laptop Programs Increase Teacher Comfort Level with Technology?  
*Sharon A Shaffer, Bowling Green State University*

Chair/Discussant *Jason R. Harshman, University of Iowa*

### **F.0800.RO Culture in the Teaching Environment**

K - Teaching and Teacher Education Paper Session

Friday 8:00am to 9:20am 9th Rogers Room

#### PRESENTATIONS

- The utility and accessibility of ebooks: The story of one CISE school  
*Angela Maria Miller*, University of Cincinnati- Blue Ash
- Cultural Effectiveness through Virtual Environments  
*Doris G. Johnson*, Wright State University
- Uncovering Subjectivity in Teaching and Research  
*Cheu-jev Lee*, Indiana University-Purdue University Fort Wayne

Chair *Patrick Mose*, Ohio University

Discussant *Teresa Young*, Xavier University

### **F.0800.CU Internationalizing and Global Education**

A - Administration, Organization, & Leadership Paper Session

Friday 8:00am to 9:20am 9th Cummings Room

#### PRESENTATIONS

- Education and empowerment of rural women: Global mandates and local manifestations  
*Rashmi Sharma*, Ohio University; *William Larson*, Ohio University
- Organizational Efficacy: A context of rural women's education  
*Rashmi Sharma*, Ohio University

Chair John Wilson, Illinois State University

Discussant Mohamed A. Nur-Awaleh, Illinois State University

### **F.0800.BO Utilization of Research in Practice: Making Useful Applications**

D - Measurement and Research Methodology Paper Session

Friday 8:00am to 9:20am 9th Bonbright Room

#### PRESENTATIONS

- A Note on the Use of Cohen's  $d$  and Common Language Effect  
*Hans E. Muehsler*, Naperville, IL Unit District 203  
*Thomas J. Smith*, Northern Illinois University  
*David A. Walker*, Northern Illinois University
- Constructing new partnerships between state agencies, regional educational laboratories, and university research centers to facilitate and expand research  
*Chad R Lochmiller*, Indiana University  
*John Hitchcock*, Indiana University  
*Kate Akers*, Kentucky Center for Education & Workforce Statistics

Chair *Tracey A Stuckey-Mickell*, The Ohio State University

Discussant *Shannon David*, North Dakota State University



- F.0930.GB MWERA Annual General Business Meeting**  
 Friday 9:30am to 10:40am 2nd Grand Ballroom
- F.1040.RO Division A Business Meeting**  
 A - Administration, Organization, & Leadership  
 Friday 10:40am to 12:00pm 9th Rogers Room
- F.1040.JA Division C Business Meeting**  
 C - Learning and Instruction Special Event  
 Friday 10:40am to 12:00pm 9th James Room
- F.1040.HO Division E Business Meeting**  
 E - Counseling & Human Development  
 Friday 10:40am to 12:00pm 9th Holgate Room
- F.1040.RO Division F Business Meeting**  
 F - History & Historiography  
 Friday 10:40am to 12:00pm 9th Rogers Room
- F.1040.HA Division G Business Meeting**  
 G - Social Context of Education  
 Friday 10:40am to 12:00pm 9th Haven Room
- F.1040.CU Division I Business Meeting**  
 I - Education in the Professions  
 Friday 10:40am to 12:00pm 9th Cummings Room
- F.1040.BO Division J Business Meeting**  
 J - Postsecondary Education  
 Friday 10:40am to 12:00pm 9th Bonbright Room
- F.1040.HI Division K Business Meeting**  
 K - Teaching and Teacher Education  
 Friday 10:40am to 12:00pm 9th Hinman Auditorium

**F.1200.GB Keynote Address**



**Dr. Simone Conceição, University of Wisconsin - Milwaukee**

**Educate, Motivate, and Support: Meeting the Needs of 21st Century Tech-Savvy Learners**

Friday 12:00pm to 1:30pm 2nd Grand Ballroom

The 21<sup>st</sup> century has been a time of transitions and changes in higher education that we could ever have imagined before. These transitions to the new century have allowed for stimulating and exciting changes in the educational arena. These changes have been impacted by the global economy, rapid technological changes, and the need to have a workforce that is constantly learning new skills. This presentation will focus on the higher education environment and how it is being transformed by the increasing presence of tech-savvy learners and the changing practices linked to their participation. It will examine how 21<sup>st</sup> century tech-savvy learners are shaping higher education, how higher education is responding to pedagogical changes, and the drivers that will enable higher education succeed to effectively educate, motivate, and support learners.

**F.0140.HO Division B Business Meeting**

B - Curriculum Studies

Friday 1:40pm to 3:00pm 9th Holgate Room

**F.0140.JA Supporting Teacher Development**

K - Teaching and Teacher Education Paper Session

Friday 1:40pm to 3:00pm 9th James Room

**PRESENTATIONS**

- Critical Issues Around Supporting Students' Disciplinary Inquiry Practices: One Middle-School History Teacher's Collaborative Reflections  
*Jacquelynn S. Popp, University of Illinois at Chicago*
- The Fear Factor: Preservice teachers' feelings about studying with inservice teachers in an ESL endorsement program. *Joanne Sellen, Western Illinois University*
- Co-Teaching: A Pilot Study Involving Student Teacher Candidates and Their Resource Teachers  
*Kathleen L. Cripe, Youngstown State University; Mary Lou DiPillo, Youngstown State University*  
*Melanie Shipman, Youngstown State University*

Chair *Cynthia Campbell, Northern Illinois University*

Discussant *Teresa Young, Xavier University*

### **F.0140.RO Keeping Students Motivated**

G - Social Context of Education      Paper Session  
Friday            1:40pm to 3:00pm      9th      Rogers Room

#### PRESENTATIONS

- Differently Motivated, Differently Achieved? An Investigation of Chinese College Students  
*Sang Yi*, Miami University; *Jinghua Zhang*, Miami University; *Aimin Wang*, Miami University
- Multiple Perspectives of Early Literacy in One Urban Community: Creating a Space for Dialogic Understanding.  
*Colleen Whittingham*, University of Illinois at Chicago  
*Emily Brown Hoffman*, University of Illinois at Chicago
- Transition to Middle School, School Culture, and Discipline History: An Exploratory Study  
*Tracey A Stuckey-Mickell*, The Ohio State University; *Hillary Tindall*, The Ohio State University

Chair            *Ibrahim Acar*, University of Nebraska-Lincoln

Discussant:    *Rachel J. Eells*, Concordia University Chicago

### **F.0140.CU Policy and Practice on Educational Evaluation: Voices from Teachers, Administrators, and Educational Researchers**

L - Educational Policy and Politics      Paper Session  
Friday            1:40pm to 3:00pm      9th      Cummings Room

#### PRESENTATIONS

- A Survey of Educational Researchers Regarding Problems and Policies in Education  
*Kristine David*, Ball State University; *Gregory J. Marchant*, Ball State University
- An In-Depth, Data-Rich Post-Mortem of Ohio's Educator Evaluation Systems: The Effects of Policy and Practice for Teachers and Principals  
*Marsha S Lewis*, Ohio University; *Margaret Hutzel*, Ohio University  
*Anirudh Virender Singh Ruhil*, Ohio University
- What Do K-12 Teachers Think about Including Student Surveys in Their Performance Ratings?  
*Beverly J. Dretzke*, University of Minnesota; *Timothy D. Sheldon*, University of Minnesota  
*Alicia Zhi Hoon Lim*, University of Minnesota

Chair            *Ting Li*, Miami University

Discussant    *Katrina Daytner*, Western Illinois University

### **F.0140.HA Methodological Insights: Research on Influencing Academic Progress and Achievement**

D - Measurement and Research Methodology      Paper Session  
Friday            1:40pm to 3:00pm      9th      Haven Room

#### PRESENTATIONS

- Educational Assets, Resources, Barriers and Social Capital in a Semi- Isolated Community of Appalachia  
*John R. Roush*, Morehead State University
- Predictors of Attitudes towards the use of Moodle for learning English in Cambodia  
*Chenda Hong*, Northern Illinois University

Chair            *Hope Quirit*, Argosy University

Discussant    *T. Mark Beasley*, University of Alabama at Birmingham

### **F.0140.BO Predicting and Assessing Student Success**

H - Research, Evaluation, & Assessment in Schools Paper Session  
Friday 1:40pm to 3:00pm 9th Bonbright Room

#### **PRESENTATIONS**

- Isolating the Effect of College Readiness on Student Retention and Progression  
*Janet Holt*, Illinois Education Research Council; *Eric Lichtenberger*, Illinois Education Research Council; *Gerry McLaughlin*, DePaul University
- An Analysis of the DuPage County Regional Office of Education Physics Exam  
*Hans E. Muehsler*, Naperville, IL Unit District 203
- An Examination of School Climate Factors and the Relationship to Student Achievement and Behaviors

Chair *Spencer Pasero*, Fermi National Accelerator Laboratory  
Discussant *Jill L. Lindsey*, Wright State University

### **F.0140.HI Culturally Responsive Computer-Based Social Skills Instruction for At-Risk Culturally Diverse Urban Learners**

C - Learning and Instruction Best Practices Forum  
Friday 1:40pm to 3:00pm 9th Hinman Auditorium

Disproportionate office disciplinary referrals frequently lead to school failure for many at-risk culturally diverse urban learners. One intervention that shows some promise is social skill instruction for more adaptive behaviors. Social skill lessons can be delivered more efficiently and effectively through computer-based technology, circumventing problems of limited teaching time, resources, and expertise. Furthermore, the integration of technology and culturally responsive elements validates the culture of students while further facilitating student engagement. As a result, expected pupil outcomes include reduced disciplinary referrals and improvements in student social and academic successes. This presentation will provide a rationale for culturally responsive computer-based social skills instruction, an example of a social skills program with culturally responsive and technological elements, and preliminary data demonstrating the effects of the intervention on the acquisition of social skills for at-risk culturally diverse urban learners.

Session Organizer *Porsha Robinson-Ervin*, Northern Kentucky University

### **F.0310.HA Beginning and Growing as Educators**

K - Teaching and Teacher Education Paper Session  
Friday 3:10pm to 4:30pm 9th Haven Room

#### **PRESENTATIONS**

- An examination of coping strategy differences between pre-service teachers completing different routes to certification.  
*Roberta Jane Scholes*, University of Missouri; *Amanda Ashley Olsen*, University of Missouri
- Elementary Education Majors Preparation for Teaching Music in the K-6 Setting  
*Robert T Townsend*, Indiana Wesleyan University; *Christopher J Devers*, Indiana Wesleyan University; *Chris Lessly*, Indiana Wesleyan University
- “Yes, I’m a scientist, too!.” A professional development model for science teachers  
*Stephanie Zywicki*, Purdue University

Chair *Kate Akers*, Kentucky Center for Education and Workforce Statistics

**F.0310.HI Funding, Technology, and Educational Entrepreneurship**

A - Administration, Organization, & Leadership Paper Session  
Friday 3:10pm to 4:30pm 9th Hinman Auditorium

PRESENTATIONS

- Performance Based Funding: An Uphill Battle. *Melissa Pitcock*, Illinois State University
- Scholarly Leadership: A Reflexive Discourse on Experiential Learning for Online Doctoral Candidate Mentoring  
*Mark L. McCaslin*, University of Phoenix
- The Windmill Learning Approach: Harnessing the Educational Power of Entrepreneurship  
*Nadia V. Jaramillo*, Iowa State University; *Moonyoung Park*, Iowa State University  
*Tera Lawson*, Iowa State University; *Ana Paula Correia*, Iowa State University  
*Ritushree Charttejeree*, Iowa State University; *Pinar Melek Arpacı*, Instructional Designer
- Tools, Strategies and Measurement of Effectiveness in Preparing Nursing Graduates for the National Council Licensure Exam  
*Hope Quirit*, Argosy University; *Sharon McNeely*, Argosy University

Chair *Melissa Pitcock*, Illinois State University

Discussant *John Wilson*, Illinois State University

**F.0310.JA Instrument Development: Examining Factor Structures**

D - Measurement and Research Methodology Paper Session  
Friday 3:10pm to 4:30pm 9th James Room

PRESENTATIONS

- A Confirmatory Factor Analysis of the Attitudes Toward Science Scale Disaggregated by Gender  
*David A. Walker*, Northern Illinois University
- An Assessment of the Factor Structure and Factorial Invariance of Scores from the Readiness to Learn Scale  
*Thomas J Smith*, Northern Illinois University; *M. Cecil Smith*, West Virginia University  
*Amy D. Rose*, Northern Illinois University; *Jovita Ross-Gordon*, Texas State University

Chair *Tracey A Stuckey-Mickell*, The Ohio State University

Discussant *Janet Holt*, Illinois Education Research Council

**F.0310.CU Using Institutional Data to Improve Programs in Higher Education**

J - Postsecondary Education Paper Session  
Friday 3:10pm to 4:30pm 9th Cummings Room

PRESENTATIONS

- Best Practices in Institutional Effectiveness Reporting  
*Dustin C. Derby*, Palmer College of Chiropractic; *Amy Everetts*, Palmer College of Chiropractic
- Satisfaction and Importance Analysis of Features and Services to Nontraditional Students: A Mixed Methods Approach.  
*Denise E. Corray*, Eastern Illinois University; *Catherine L. Polydore*, Eastern Illinois University

Chair *Katrina Daytner*, Western Illinois University

Discussant *Gary Daytner*, Western Illinois University

**F.0310.BO Division H Business Meeting - Guest Speaker Steve Cordogan**

H - Research, Evaluation, & Assessment in Schools Special Event

Friday 3:10pm to 4:30pm 9th Bonbright Room

**F.0310.HO Building Character in Schools**

G - Social Context of Education Paper Session

Friday 3:10pm to 4:30pm 9th Holgate Room

**PRESENTATIONS**

- Adolescents' Veracity Development and Validation of the Veracity Subscale of Cultural Probe Approach: A Self-Perception Scale.  
*Kun Zhu*, Miami University; *Yiyuan Zhang*, Miami University  
*Ting Li*, Miami University; *Aimin Wang*, Miami University
- Development of Environmental and Socio-moral Reasoning in Early Childhood: A Research in Progress.  
*Julia Torquati*, University of Nebraska-Lincoln; *Ibrahim Acar*, University of Nebraska-Lincoln; *Elsa Escalante*, University of Nebraska-Lincoln; *Julia Kroeker*, University of Nebraska-Lincoln; *Blair Kalinski*, University of Nebraska-Lincoln; *Merveille Tshita*, University of Nebraska-Lincoln
- Prediction of Social Competence and Antisocial Behavior by Temperament and Student-Teacher Relationship.  
*Ibrahim Acar*, University of Nebraska-Lincoln; *Suleyman Yildiz*, Istanbul University  
*Arif Dede*, Arnavutkoy, District National Education Directorate

Chair *Jenny Kilgore*, Indiana Wesleyan University, Miami University

Discussant *Rachel J. Eells*, Concordia University Chicago

**F.0310.RO Research-Based Best Practices in the Development of Quality Online Courses for Graduate, Undergraduate, and K-12 Students: An Interactive Workshop**

C - Learning and Instruction Workshop

Friday 3:10pm to 4:30pm 9th Rogers Room

The purpose of this workshop is to disseminate and apply research-based best practices in the development of online courses based on the Quality Matters Rubric standards. The objectives of this workshop are for the presenters and participants to 1) define and identify the components of a quality graduate, undergraduate, and/or K-12 online course, 2) disseminate and apply research-based best practices derived from the Quality Matters Rubric standards through the creation and/or modification of an online course, and 3) discuss the implementation of these research-based best practices in specific contexts relevant to the personal rationales, resources, and research of the presenters and participants. The presenters welcome audience members with a diverse knowledge and skill level in respect to the development of quality online courses for graduate, undergraduate, and K-12 students.

Session Organizer: *Nicole Williams*, The University of Findlay

*Saturday, November 15, 2014*

**S.0800.HA MWERA Board of Directors Meeting**

MWERA Annual Meeting --- Special Event

Saturday, 8:00 AM to 12:00 PM --- 9<sup>th</sup>-Haven

*ABSTRACT: All MWERA members of the Board of Directors are expected to be in attendance.*

## Index of Session Participants

### A

Aalboe, Joanna ..... T.0930.CU  
 Acar, Ibrahim ..... F.0140.RO, F.0310.HO  
 Ahmed, Areej ..... T.0440.RO, T.0930.JA  
 Akers, Kate Shirley ..... F.0800.BO  
 Akers, Kate Shirley T.0930.BO, F.0310.HA  
 Anandappa, Suzanne ..... T.0930.CU  
 Angelova, Maria ..... T.0440.RO  
 Arif, Nasiha ..... T.0800.HA  
 Arnold, Daniel ..... T.0140.JA  
 Arpaci, Pinar Melek T.0140.CU, F.0310.HI,  
 F.0800.JA

### B

Ball, Alexis E ..... T.0440.RO  
 Banicki, Guy Joseph ..... T.0440.CU  
 Beasley, Timothy Mark ..... T.0600.HI,  
 T.0800.HA, T.0930.BO, T.0930.HA,  
 T.1100.HI, T.1200.HO, F.0140.HA,  
 F.0800.HO, F.0930.GR, F.1200.GR,  
 S.0800.HA  
 Bender-Slack, Delane ..... T.0140.RO,  
 T.0440.JA, T.0800.BO, T.0800.JA,  
 T.0930.RO, F.0140.JA, F.0310.HA,  
 F.0800.HI, F.0800.RO, F.1040.HI  
 Bongers, Nicholas ..... T.0140.JA  
 Brooks, Gordon ..... F.0800.HO  
 Burgin, Ximena D. .... T.0440.RO

### C

Cain, Laura ..... F.0800.JA  
 Campbell, Cynthia T.0930.JA, F.0140.JA  
 Charttejerree, Ritushree ..... F.0310.HI  
 chatterjee, ritushree T.0140.CU, F.0800.JA  
 Chemosit, Caroline C ..... T.0440.CU  
 Chuluunbaatar, Solongo ..... T.0440.RO  
 Clark, Chad Jeremy T.0140.RO, T.0310.CU,  
 T.0930.HA  
 Clarke, Laura ..... F.0800.JA  
 Clesen, Molly ..... T.0440.CU  
 Coats, Tamara ..... T.0930.RO  
 Corray, Denise E. .... F.0310.CU  
 Correia, Ana Paula T.0140.CU, F.0310.HI  
 Cripe, Kathleen L. .... F.0140.JA  
 Cummings, Todd ..... F.0800.JA

### D

David, Kristine ..... F.0140.CU  
 David, Shannon. T.0140.HA, T.0930.BO,  
 F.0800.BO  
 Davidson, Jennifer ..... T.0800.HI  
 Davis, Marcia ..... F.0800.JA  
 Daytner, Gary ..... F.0310.CU  
 Daytner, Katrina T.0140.BO, F.0140.CU,  
 F.0310.CU, F.1040.BO  
 Dede, Arif ..... F.0310.HO

Derby, Dustin C. . T.0930.BO, F.0310.CU  
 DeSpain, Stephanie ..... T.0440.CU  
 Devers, Christopher J ..... F.0310.HA  
 DiPillo, Mary Lou ..... F.0140.JA  
 Dolph, David ..... T.0800.HI  
 Dong, Xin ..... T.0440.HA  
 Dretzke, Beverly J.T.0930.CU, F.0140.CU  
 Dugas, Daryl ..... T.0440.JA

### E

Edwards, Julianne M ..... T.0310.JA  
 Eells, Rachel J ..... T.0140.CU, F.0140.RO,  
 F.0310.HO  
 Escalante, Elsa ..... F.0310.HO  
 Everetts, Amy ..... F.0310.CU

### F

Farrenkopf, Patricia ..... T.0800.CU

### G

Galletta, Anne ..... T.0310.JA, T.0930.RO  
 Gao, Yang ..... T.0440.JA  
 Geer, Cynthia Hayes T.0140.RO, T.0800.JA  
 George, Anne ..... T.0800.HA, F.1040.CU  
 Ghattu, Anupama ..... T.0140.BO  
 Gherardi, Stacy ..... F.0800.HA  
 Godwyll, Francis E. T.0310.JA, T.0800.HA,  
 F.0800.HA  
 Goffena, Jordan ..... F.0800.JA  
 Gorgosz, Jon E ..... T.0310.CU

### H

Halasa, Katrina ..... T.0930.CU  
 Hansen, Christopher ..... T.0440.CU  
 Harrington, Rachel ..... T.0930.CU  
 Harshman, Jason RT.0310.JA, T.0800.BO,  
 F.0800.HI  
 Hartlep, Nicholas D ..... T.0440.CU  
 Hasebe, Yuki ..... F.0800.JA  
 Hemingway, Jennie ..... T.0310.CU  
 Hensley, Brandon O. T.0310.CU, F.1040.BO  
 Hitchcock, John ..... F.0800.BO  
 Hoffman, Emily Brown ..... F.0140.RO  
 Holt, Janet ..... F.0140.BO, F.0310.JA  
 Hong, Chenda ..... F.0140.HA  
 Honig, Sheryl ..... T.0800.JA  
 Huang, Grace H.C. .... F.0800.JA  
 Husband, Terry ..... T.0930.JA, F.0800.JA  
 Hutzel, Margaret ..... F.0140.CU

### J

Jaramillo, Nadia VT.0140.CU, T.0440.RO,  
 T.0930.HA, F.0310.HI  
 Jefferis, Jacob ..... T.0800.HI  
 Jimenez Soffa, Sara ..... T.0140.BO

Johnson, Doris G. .... F.0800.RO  
 Jonas, Peter M ..... T.0310.HA

### K

Kalinski, Blair ..... F.0310.HO  
 Karakus, Turkan ..... F.0800.JA  
 Kibe, Grace ..... T.0930.RO  
 kilgore, jenny ..... T.0800.BO, F.0310.HO  
 Kim, Taehyun ..... T.0800.RO  
 Kinney, Miranda ..... T.0440.CU  
 Klostermann, Brenda ..... F.0800.JA  
 Konkol, Pamela ..... T.0800.BO  
 Koskey, Kristin L. K. .... T.0930.CU  
 Kowalski, Theodore J ..... T.0440.CU  
 Kowalski, Theodore J ..... T.0800.HI  
 Kroeker, Julia ..... F.0310.HO  
 Kushner Benson, Susan N ..... T.0930.CU

### L

Landerman, Katelyn ..... T.0140.RO  
 Larson, Mimi ..... T.0800.CU  
 Larson, William ..... F.0800.CU  
 Lash, Kelly ..... T.0140.CU, T.0930.JA  
 Lawson, Tera ..... T.0140.CU, F.0310.HI  
 Lee, Cheu-jey ..... F.0800.RO  
 Lentz, Lorette ..... T.0930.RO  
 Lessly, Chris ..... F.0310.HA  
 Lewis, Marsha S ..... F.0140.CU  
 Li, Nan ..... T.0440.HA  
 Li, Ting T.0140.HI, T.0440.HA, T.0800.CU,  
 T.0930.HA, F.0140.CU, F.0310.HO,  
 F.0800.HA  
 Lichtenberger, Eric F.0140.BO, F.0800.JA  
 Lim, Alicia Zhi Hoon ..... F.0140.CU  
 Lindsey, Jill L ..... T.0140.JA, T.0440.HA,  
 F.0140.BO  
 Liu, Xiongyi ..... T.0440.JA, T.0930.CU  
 Lochmiller, Chad R ..... F.0800.BO  
 Lu, Yan ..... T.0800.CU  
 Luke, Jeremy ..... F.0800.HA  
 Lukenchuk, Antonina ..... T.0140.BO  
 Lyutykh, Elena ... T.0800.CU, F.1040.HO

### M

Magiste, Edward J.T.0440.JA, T.0800.HA  
 MANSFIELD, ERIC T.0140.BO, F.1040.BO  
 Marchant, Gregory J.T.0310.JA, F.0140.CU  
 May, Judith Jackson T.0140.CU, T.0440.RO  
 Mays, Thomas ..... T.0140.BO  
 Mc Neely, Sharon ..... F.0310.HI  
 McCaslin, Mark L ..... F.0310.HI  
 McCreary, John J ..... T.0310.JA  
 McCubbins, Sara ..... T.0440.CU  
 McElhiney, Danielle T.0140.HA, T.0930.BO  
 McLaughlin, Gerry ..... F.0140.BO  
 Mehner, Nick ..... F.0800.JA  
 Meidl, Christopher T.0140.RO, T.0930.HA  
 Menzies, Derek T. .... T.0800.HA



Militz Frielink, Sarah ..... T.0800.BO  
Miller, Angela Maria..... F.0800.RO  
Moore, Shaun ..... T.0140.JA  
Morgan, Grant ..... T.0440.CU  
Mose, Patrick..... T.0140.RO, T.0800.HA,  
F.0800.RO  
Motter, Toivo ..... T.0930.CU  
Muehler, Hans E.F.0140.BO, F.0800.BO  
Mullen, Laurie ..... F.0800.JA

## N

Narayanan, Balaguruprasad.....F.0800.HI  
Nelson, Jessi ..... T.0930.HA  
Nunez, Isabel..... T.0800.BO  
Nur-Awaleh, Mohamed A. .... T.0140.JA,  
T.0440.CU, T.0800.HI, T.0930.HA,  
F.0310.HI, F.0800.CU, F.1040.RO

## O

Olaughlin, Sean ..... T.0440.CU  
Olsen, Amanda Ashley ..... F.0310.HA  
Orr, Maurya ..... T.0930.CU  
Otte Allen, Suzanne..... T.0140.BO

## P

Park, Moonyoung. T.0140.CU, F.0310.HI  
Pasero, Spencer . T.0930.CU, F.0140.BO,  
F.0310.BO, F.0800.JA  
Peterson, Jennifer Lynn..... T.0140.JA  
Pitcock, Melissa ..T.0310.CU, F.0310.HI,  
F.1040.RO  
Polydore, Catherine L..... F.0310.CU  
Popp, Jacquelynn S..... F.0140.JA

## Q

Quirit, Hope.....F.0140.HA F.0310.HI

## R

Reeves, Todd..... T.0800.JA  
Robinson-Ervin, Porsha.....F.0140.HI  
Rodriguez, Aldo ..... F.0800.JA  
Rose, Amy D..... F.0310.JA  
Ross-Gordon, Jovita ..... F.0310.JA  
Roush, John R. .... F.0140.HA  
Rugutt, John K..... T.0440.CU  
Ruhil, Anirudh Virender SinghT.0930.BO,  
F.0140.CU, F.0800.HA

## S

Sanders, Khahlia..... T.0440.HA  
Schendel, Roland..... F.0800.JA  
Scholes, Roberta Jane..... F.0310.HA  
Schroer, Joseph ET.0140.CU, T.0440.RO,  
T.0930.BO, T.0930.JA, F.0800.JA,  
F.1040.JA  
Schwartz, J. .... F.0800.JA  
Sears, Martha..... T.0140.CU

Sellen, Joanne ..... T.0440.JA, F.0140.JA  
Shaffer, Sharon A ..... F.0800.HI  
Sharma, Rashmi ..... F.0800.CU  
Sheldon, Timothy D..... F.0140.CU  
Shipman, Melanie ..... F.0140.JA  
Smith, M Cecil..... F.0310.JA  
Smith, Thomas J ..... F.0310.JA  
Smith, Thomas J. .... F.0800.BO  
Soboleski, Penny..... F.1040.CU  
Stevens, Sharon..... T.0140.BO  
Stuckey-Mickell, Tracey A. .... T.0310.HI,  
T.0930.BO, F.0140.HA, F.0140.RO,  
F.0310.JA, F.0800.BO

## T

Taabu, Simon..... T.0930.HA  
Tas, Yasemin ..... F.0800.JA  
Tawfik, Andrew ..... T.0800.BO  
Thompson, Cynthia Lucretia.. T.0930.CU  
Tindall, Hillary..... F.0140.RO  
Tonks, Stephen M. .... F.0800.JA  
Torquati, Julia ..... F.0310.HO  
Townsend, Robert TT.0930.HA, F.0310.HA  
Trask, Tisa ..... T.0440.CU  
Trombetta, Adriana ..... T.0310.JA  
Tshita, Merveille..... F.0310.HO

## U

Unruh, Brett M.....T.0800.JA

## W

Walker, David A. . T.1100.HI, F.0310.JA,  
F.0800.BO  
Wang, Aimin.....T.0140.HI, T.0440.HA,  
T.0800.CU, F.0140.RO, F.0310.HO  
Wang, Yikang ..... T.0310.JA, F.0140.RO,  
F.0310.HO, F.1040.HA  
Weinert, Dan J. .... T.0930.BO  
White, Robyn..... T.0930.RO  
Whittingham, Colleen ..... F.0140.RO  
Wickland, Trisha..... T.0140.CU  
Williams, Eurvine J..... F.0140.HO  
Williams, Nicole .T.0800.BO, F.0310.RO  
Wilson, John .....T.0800.HI, F.0310.HI,  
F.0800.CU  
Wolf, Chyrese Stephanie..... T.0440.HA  
Woolard, Chad..... T.0310.CU

## Y

Yi, Sang .....F.0140.RO  
Yildiz, Suleyman ..... F.0310.HO  
Young, Teresa..... T.0930.RO, F.0140.JA,  
F.0800.RO, F.1040.HI

## Z

Zaleski, Diana ..... T.0310.RO  
Zhang, Jinghua.....F.0140.RO  
Zhang, Lei..... F.0800.HI

Zhang, Yiyuan..... F.0310.HO  
Zhao, Yuhan ..... T.0800.CU  
Zhu, Kun ..... F.0310.HO  
Zimmerman, Aaron Samuel .... T.0440.JA  
Zuel, Brian..... F.0800.JA  
Zywicki, Stephanie ..... F.0310.HA

## *Cross-Index to Session Sponsors*

### **A - Administration, Organization, & Leadership**

- T.0800.HI Leadership roles and change in P-12 and higher education  
 T.0140.JA Technology and Online Education in Higher Education  
 T.0440.CU Teacher Compensation, Quality and Teacher Dispositions  
 F.0800.CU Internationalizing and global education  
 F.1040.RO Division A Business Meeting  
 F.0310.HI Funding, Technology and Educational Entrepreneurship

### **B - Curriculum Studies**

- T.0800.RO How to utilize media technology in early childhood classrooms  
 T.0930.HA Variety of Approaches to Conducting Research in Curriculum Development  
 F.0140.HO Division B Business Meeting

### **C - Learning and Instruction**

- T.0930.JA Examining Teaching & Learning: From Technology to Music  
 T.0140.CU Novel Approaches to Learning  
 T.0440.RO Second Language Learning: Technology & Multicultural Variables  
 F.0800.JF Division C: Teaching and Learning Poster Session  
 F.1040.JA Division C Business Meeting  
 F.0140.HI Culturally Responsive Computer-Based Social Skills Instruction for At-Risk Culturally Diverse Urban Learners  
 F.0310.RO Research-Based Best Practices in the Development of Quality Online Courses for Graduate, Undergraduate, and K-12 Students: An Interactive Workshop

### **D - Measurement and Research Methodology**

- T.0930.BO Psychometrics in Practice: Measuring Humanitarian Constructs  
 T.0140.HA Polytomous IRT Modeling: How to Poly!  
 T.0310.HI Division D Business Meeting: Throwback: Quantitative/Qualitative Debate  
 F.0800.BO Utilization of Research in Practice: Making Useful Applications  
 F.0140.HA Methodological Insights: Research on Influencing Academic Progress and Achievement  
 F.0310.JA Instrument Development: Examining Factor Structures

### **E - Counseling & Human Development**

- T.0800.CU Preschool to College: Development and Well-Being in and outside the Classroom  
 F.1040.HO Division E Business Meeting

### **F - History & Historiography**

- T.0310.CU Historical Look at Civil Engagement, Adjunct Oppression, Perceptions of Women, and Student Criminal Backgrounds  
 F.1040.RO Division F Business Meeting

### **G - Social Context of Education**

- T.0310.JA Evaluating Social and Economic Factors in School Settings  
 F.1040.HA Division G Business Meeting  
 F.0140.RO Keeping Students Motivated  
 F.0310.HO Building Character in Schools

### **H - Research, Evaluation, & Assessment in Schools**

- T.0930.CU Innovative Course and Curriculum Evaluation  
 T.0310.RO Measuring Student Growth in Illinois  
 F.0800.JF Division H Poster Session  
 F.0140.BO Predicting and Assessing Student Success  
 F.0310.BO Division H Business Meeting - Guest Speaker Steve Cordogan

### **I - Education in the Professions**

- T.0800.HA Research in Education in the Professions  
 F.1040.CU Division I Business Meeting

### **J - Postsecondary Education**

- T.0140.BO Using Technology in Post-Secondary Classrooms  
 F.1040.BO Division J Business Meeting  
 F.0310.CU Using Institutional Data to Improve Programs in Higher Education

### **K - Teaching and Teacher Education**

- T.0800.BO Space and Place: Learning to Teach  
 T.0800.JA Engaging in Literacy Practices to Increase Learning  
 T.0930.RO Attending to Diverse Student Populations  
 T.0140.RO Technology in the Classroom  
 T.0310.HA Videagogy: Using Short, Funny Videos to Enhance Learning  
 T.0440.JA Journey of Learning to Teach  
 F.0800.HI Teachers and Technology  
 F.0800.JA Professional Educators Initiative  
 F.0800.RO Culture in the Teaching Environment  
 F.1040.HI Division K Business Meeting

F.0140.JA Supporting Teacher Development  
F.0310.HA Beginning and Growing as Educators

**L - Educational Policy and Politics**

T.0140.HI Division L Business Meeting - Guest  
Speakers  
T.0440.HA Educational Policy Impacted by  
Assessment: Teachers and Students on  
An International Scale  
F.0800.HA The Changing Social Dynamics at  
Schools under the Influence of High  
Technology  
F.0140.CU Policy and Practice on Educational  
Evaluation: Voices from Teachers,  
Administrators, and Educational  
Researchers

**MWERA Annual Meeting**

T.1100.HI Presidential Address  
T.1200.HO MWERA Division Chairs Luncheon  
T.0600.HF MWERA President's Cracker Barrel  
F.0800.HO MWERA Association Council Meeting  
F.0930.GR MWERA Business Meeting  
F.1200.GR Keynote Address - Simone Conceição -  
Educate, Motivate, and Support:  
Meeting the Needs of 21st Century  
Tech-Savvy Learner  
S.0800.HA MWERA Board of Directors Meeting

# SUBJECT INDEX

- Academic Outcomes**  
*F.0310.HI, F.0800.JA*
- Accountability**  
*T.0310.RO, F.0140.CU, F.0310.CU*
- Achievement**  
*T.0310.JA*
- Achievement Gap**  
*T.0140.CU*
- Administration**  
*T.0440.CU, T.0800.HI, F.0310.HI*
- Adult Education/Development**  
*T.0140.JA, T.0440.JA, T.0800.HA, F.0310.JA, F.0800.CU*
- Arts Education**  
*T.0930.CU*
- Asian Education**  
*T.0800.RO, F.0800.CU*
- Assessment**  
*T.0800.JA, T.0930.JA, F.0140.BO, F.0140.HA, F.0800.BO*
- At-Risk Students**  
*F.0140.HI, F.0140.RO, F.0800.RO*
- Attitude**  
*F.0800.RO*
- Bilingual/Bicultural**  
*T.0440.RO*
- Brain Research**  
*T.0310.HA, T.0800.CU*
- Case Studies**  
*T.0800.BO, F.0800.JA*
- Child Development**  
*F.0310.HO*
- Citizenship**  
*T.0310.CU*
- Classroom Assessment**  
*T.0310.RO, T.0930.JA*
- Classroom Management**  
*T.0440.JA*
- Cognition**  
*F.0800.JA*
- Cognitive Processes/Development**  
*T.0930.JA*
- Collaboration**  
*T.0440.RO*
- Community Development**  
*F.0140.RO*
- Computer Applications**  
*F.0800.JA*
- Computers and Learning**  
*T.0140.JA, T.0800.HA, T.0930.HA, F.0800.HI, F.0800.JA*
- Conceptual Change**  
*T.0140.CU*
- Counseling**  
*T.0800.CU*
- Cross-Cultural Studies**  
*T.0930.HA, F.0140.RO*
- Cultural Capital**  
*T.0440.HA*
- Cultural Groups**  
*T.0440.HA*
- Culturally Responsive Teaching**  
*F.0140.HI*
- Curriculum Design and Evaluation**  
*F.0310.HI*
- Curriculum Theory**  
*F.0800.JA*
- Curriculum in Classroom**  
*T.0930.HA*
- Databases**  
*F.0800.BO*
- Decision Making**  
*F.0310.HI*
- Democratic Practices**  
*T.0310.CU, F.0800.RO*
- Disability Studies**  
*F.0800.HA, F.0800.JA*
- Discourse Studies**  
*T.0140.BO*
- Disparities**  
*T.0930.JA*
- Distance Learning**  
*T.0140.JA, T.0800.BO, T.0800.HI, F.0310.RO, F.0800.JA*
- Dropouts**  
*T.0310.JA*
- ESL/ENL**  
*T.0440.RO*
- Early Childhood**  
*T.0800.CU, F.0140.RO, F.0310.HO, F.0800.JA*
- Ecology and Environmental Education**  
*F.0310.HO*
- Economics of Education**  
*T.0310.JA*
- Educational Indicators**  
*T.0800.CU*
- Educational Policy**  
*T.0440.HA, F.0140.CU, F.0310.HA, F.0800.JA*
- Educational Reform**  
*T.0310.RO*
- Effect Size**  
*F.0800.BO*
- Efficacy**  
*T.0140.BO, T.0930.HA*
- Elementary Schools**  
*T.0140.RO, F.0310.HA, F.0310.HO*
- Environmental Education**  
*F.0310.HO*
- Ethnography/Autoethnography**  
*F.0800.CU*
- Evaluation**  
*T.0930.CU, F.0140.CU, F.0310.CU, F.0800.JA*
- Experiential Education**  
*T.0440.JA, T.0930.CU, F.0310.HI*
- Experimental Design**  
*F.0140.BO*
- Factor Analysis**  
*F.0310.JA*
- Faculty Development**  
*T.0140.JA*
- Faculty Issues**  
*T.0310.CU*
- Families**  
*F.0800.JA*
- Finance**  
*T.0440.CU, F.0310.HI*
- Gender Studies**  
*T.0310.CU*
- Gifted Education**  
*T.0800.CU*
- Global Education**  
*T.0440.HA*
- High Schools**  
*F.0140.BO*
- Higher Education**  
*T.0140.BO, T.0140.JA, T.0310.CU, T.0800.HI, T.0930.HA, F.0140.RO, F.0310.CU, F.0800.JA*
- Hispanic**  
*T.0310.JA*
- History**  
*T.0310.CU, F.0140.JA*
- Human Development**  
*T.0800.CU, F.0310.HO*
- Identity**  
*T.0440.JA*
- Individual Differences**  
*T.0140.RO*
- Instructional Design/Development**  
*T.0140.RO, F.0310.RO*
- Instructional Interventions**  
*T.0140.RO, T.0800.HA, T.0930.HA, F.0800.JA*
- Instructional Practices**  
*T.0310.HA*
- Instructional Technology**  
*T.0140.CU, T.0140.JA, T.0440.RO, F.0310.RO, F.0800.HI, F.0800.JA, F.0800.RO*
- International Education/Studies**  
*T.0310.JA*
- Internet and Education**  
*T.0800.HA, T.0930.HA*

**Item Response Theory (IRT)**  
*T.0140.HA*

**Language**  
**Comprehension/Development**  
*T.0440.RO, T.0930.JA*

**Latino/a, or see Hispanic**  
*T.0440.RO*

**Law/Legal**  
*T.0310.CU*

**Leadership**  
*T.0800.HI, F.0310.HI*

**Leadership Development**  
*F.0310.HI*

**Learning Environments**  
*T.0140.CU, T.0440.CU, T.0930.HA*

**Learning Processes/Strategies**  
*T.0800.CU, T.0800.HA*

**Learning from Experience**  
*T.0140.CU*

**Literacy**  
*T.0440.HA, T.0930.RO, F.0140.RO, F.0800.RO*

**Literature**  
*T.0930.HA*

**Mathematics Education**  
*T.0440.RO*

**Measurement**  
*T.0140.HA, T.0930.BO, F.0310.HO*

**Mentoring**  
*F.0310.HI*

**Middle Schools**  
*F.0140.RO*

**Mixed Methods**  
*T.0800.JA, F.0310.CU*

**Moral Education/Development**  
*T.0930.HA*

**Motivation**  
*T.0440.CU, F.0140.RO, F.0800.JA*

**Multicultural Education**  
*F.0800.RO*

**Narrative**  
*T.0310.JA*

**Organizational Theory**  
*T.0930.BO*

**Parental Involvement**  
*T.0140.CU*

**Parents and Families**  
*F.0800.HA, F.0800.JA*

**Performance Assessment**  
*T.0800.HI*

**Philosophy**  
*T.0800.BO*

**Policy**  
*F.0800.HA*

**Postsecondary Education**  
*T.0140.BO, F.0140.BO*

**Preschool**  
*T.0800.CU*

**Principals**  
*T.0800.HI*

**Problem-based Learning**  
*T.0800.HA*

**Professional Accountability**  
*T.0800.HA*

**Professional Community**  
*F.0140.CU*

**Professional Development**  
*T.0800.HA, F.0310.HA*

**Professional Knowledge**  
*T.0140.BO*

**Psychometrics**  
*T.0930.BO*

**Qualitative Research**  
*T.0800.BO, F.0800.CU, F.0800.JA*

**RASCH Models**  
*T.0140.HA, T.0930.BO*

**Reading**  
*T.0440.RO, T.0930.JA, F.0800.JA*

**Religion**  
*T.0800.CU*

**Research Methodology**  
*T.0800.BO, F.0140.HA, F.0310.JA, F.0800.BO*

**Research Utilization**  
*F.0800.BO*

**Retention**  
*T.0930.RO, F.0140.BO, F.0310.CU*

**Rural Education**  
*T.0930.CU, F.0140.HA*

**School Choice**  
*F.0800.HA*

**School Culture**  
*F.0140.RO*

**School/Teacher Effectiveness**  
*F.0140.CU, F.0310.HO*

**Science Education**  
*T.0800.HA, F.0310.HA, F.0310.JA*

**Situated Learning**  
*F.0140.JA*

**Social Capital**  
*T.0140.BO, F.0140.HA*

**Social Context**  
*T.0140.CU*

**Social Justice**  
*T.0800.BO, T.0930.BO*

**Social Studies Education**  
*T.0930.CU*

**Special Education**  
*T.0140.RO, T.0930.JA*

**Statistics**  
*T.0440.CU*

**Student Teaching**  
*F.0140.JA*

**Survey Research**  
*F.0140.CU*

**Teacher Assessment**  
*F.0140.CU, F.0800.JA*

**Teacher Characteristics**  
*F.0310.HA*

**Teacher Cognition**  
*T.0440.JA*

**Teacher Education/Development**  
*T.0140.BO, T.0440.CU, T.0440.HA, T.0440.JA, T.0800.BO, T.0800.HA, T.0800.JA, T.0930.HA, T.0930.JA, T.0930.RO, F.0140.JA, F.0310.HA, F.0800.HI, F.0800.JA, F.0800.RO*

**Teacher Knowledge**  
*T.0440.JA, F.0800.HI, F.0800.RO*

**Teacher Quality**  
*F.0800.JA*

**Teaching Context**  
*T.0800.BO*

**Teaching and Learning**  
*T.0140.RO, T.0310.CU, T.0310.HA, T.0440.RO, F.0800.RO*

**Team Learning**  
*F.0310.HI*

**Technology**  
*T.0140.BO, T.0140.CU, T.0140.JA, T.0140.RO, T.0440.RO, T.0930.HA, T.0930.JA, F.0140.HA, F.0800.HA, F.0800.HI, F.0800.JA*

**Urban Education**  
*T.0440.CU*

**Validity/Reliability**  
*F.0310.JA*

**Women's Issues**  
*T.0310.CU, F.0800.CU*

**Writing**  
*T.0800.JA*

## Address Directory of Conference Participants

<b>Aalboe, Joanna</b> University of Kentucky	<i>joanna.aalboe@uky.edu</i>	<b>Cripe, Kathleen L.</b> Youngstown State University	<i>mlcripe@ysu.edu</i>
<b>Acar, Ibrahim</b> University of Nebraska-Lincoln	<i>ihacar@gmail.com</i>	<b>Cummings, Todd</b> Fort Wayne Community Schools	<i>C.Todd.Cummings@fwcs.k12.in.us</i>
<b>Ahmed, Areej</b> Ohio University	<i>aa239707@ohio.edu</i>	<b>David, Kristine</b> Ball State University	<i>kadavid@bsu.edu</i>
<b>Akers, Kate S.</b> Kentucky Center for Education & Workforce	<i>Kate.Akers@ky.gov</i>	<b>David, Shannon</b> North Dakota State University	<i>shannon.david@ndsu.edu</i>
<b>Anandappa, Suzanne</b> University of Kentucky	<i>suzanne.anandappa@uky.edu</i>	<b>Davidson, Jennifer</b> Illinois State University	<i>jldavi5@ilstu.edu</i>
<b>Angelova, Maria</b> Cleveland State University	<i>m.angelova@csuohio.edu</i>	<b>Davis, Marcia</b> Johns Hopkins University	<i>marcy@jhu.edu</i>
<b>Arif, Nasiha</b> Ohio University	<i>na114209@ohio.edu</i>	<b>Daytner, Gary</b> Western Illinois University	<i>gt-daytner@wiu.edu</i>
<b>Arnold, Daniel</b> Oakland University	<i>arnold23@oakland.edu</i>	<b>Daytner, Katrina</b> Western Illinois University	<i>KM-Daytner@wiu.edu</i>
<b>Arpaci, Pinar Melek</b> Instructional Designer	<i>pinar@iastate.edu</i>	<b>Dede, Arif</b> Arnavutkoy district national education directorate	<i>dedearif@mynet.com</i>
<b>Ball, Alexis E</b> Northern Illinois University, 821 Normal Rd, DeKalb, IL 60115	<i>aball4@niu.edu</i>	<b>Derby, Dustin C.</b> Palmer College of Chiropractic	<i>dustin.derby@palmer.edu</i>
<b>Banicki, Guy Joseph</b> Illinois State University, 503 Amherst, Normal, IL 61761	<i>gbanick@ilstu.edu</i>	<b>DeSpain, Stephanie</b> Illinois State University	<i>snbaker@ilstu.edu</i>
<b>Beasley, T. Mark</b> University of Alabama at Birmingham	<i>mbeasley@uab.edu</i>	<b>Devers, Christopher J</b> Indiana Wesleyan University	<i>christopherdevers@gmail.com</i>
<b>Bender-Slack, Delane</b> Xavier University	<i>benderslackd@xavier.edu</i>	<b>DiPillo, Mary Lou</b> Youngstown State University	<i>ml dipillo@ysu.edu</i>
<b>Bongers, Nicholas</b> Oakland University	<i>bongers@oakland.edu</i>	<b>Dolph, David</b> University of Dayton	<i>ddolph1@udayton.edu</i>
<b>Burgin, Ximena D.</b> Northern Illinois University	<i>xrecald1@niu.edu</i>	<b>Dong, Xin</b> Miami University	<i>xdong1@sycamores.indstate.edu</i>
<b>Cain, Laura</b> Fort Wayne Community Schools	<i>Laura.Cain@fwcs.k12.in.us</i>	<b>Dretzke, Beverly J.</b> University of Minnesota	<i>dretz001@umn.edu</i>
<b>Campbell, Cynthia</b> Northern Illinois University	<i>ccampbell@niu.edu</i>	<b>Dugas, Daryl</b> Northern Illinois University	<i>ddugas@niu.edu</i>
<b>Charttejerree, Ritushree</b> Iowa State University	<i>ritu@mail.iastate.edu</i>	<b>Edwards, Julianne M</b> Ball State University	<i>jmedwards2@bsu.edu</i>
<b>Chemosit, Caroline C</b> University of Kabianga	<i>cchemosit@yahoo.com</i>	<b>Eells, Rachel J</b> Concordia University Chicago	<i>rachel.eells@cuchicago.edu</i>
<b>Chuluunbaatar, Solongo</b> University of Illinois	<i>schulu2@uic.edu</i>	<b>Escalante, Elsa</b> University of Nebraska-Lincoln	<i>elsitaescalante@yahoo.com</i>
<b>Clark, Chad Jeremy</b> Southwestern City Schools/Ashland University	<i>cclark2@ashland.edu</i>	<b>Everetts, Amy</b> Palmer College of Chiropractic	<i>amy.everetts@palmer.edu</i>
<b>Clarke, Laura</b> Ball State University	<i>lsclarke@bsu.edu</i>	<b>Farrenkopf, Patricia</b> Concordia of Chicago/New Albany Plain Local Schools	<i>emrsnpatty@columbus.rr.com</i>
<b>Clesen, Molly</b> Illinois State University	<i>maclese@ilstu.edu</i>	<b>Galletta, Anne</b> Cleveland State University	<i>a.galletta@csuohio.edu</i>
<b>Coats, Tamara</b> Cleveland State University	<i>tcoats@lorainccc.edu</i>	<b>Gao, Yang</b> Kent State University	<i>ygao8@kent.edu</i>
<b>Corray, Denise E.</b> Eastern Illinois University	<i>decorray@eiu.edu</i>	<b>Geer, Cynthia Hayes</b> Xavier University	<i>geer@xavier.edu</i>
<b>Correia, Ana Paula</b> Iowa State University	<i>acorreia@iastate.edu</i>	<b>Ghattu, Anupama</b> Indiana State University	<i>aghattu@sycamores.indstate.edu</i>

<b>Gherardi, Stacy</b> University of Illinois at Chicago	<i>stacygherardi@gmail.com</i>	<b>Kilgore, Jenny</b> Indiana Wesleyan University & Miami University	<i>kilgorja@aol.com</i>
<b>Godwyll, Francis E.</b> University of North Florida	<i>francis.godwyll@unf.edu</i>	<b>Kim, Taehyun</b> Indiana State University	<i>tkim6@sycamores.indstate.edu</i>
<b>Goffena, Jordan</b> Miami University	<i>goffenjd@miamioh.edu</i>	<b>Kinney, Miranda</b> Illinois State University	<i>mdkinn2@ilstu.edu</i>
<b>Gorgosz, Jon E</b> Southern Illinois University	<i>Jonstu18@siu.edu</i>	<b>Klostermann, Brenda</b> Illinois Education Research Council	<i>breklos@siue.edu</i>
<b>Halasa, Katrina</b> Akron Public Schools	<i>khalasa@akron.k12.oh.us</i>	<b>Konkol, Pamela</b> Center for Policy and Social Justice - Concordia University	<i>pamela.konkol@cuchicago.edu</i>
<b>Hansen, Christopher</b> Illinois State University	<i>christophermhansen@gmail.com</i>	<b>Koskey, Kristin L. K.</b> University of Akron	<i>koskey@uakron.edu</i>
<b>Harrington, Rachel</b> University of Kentucky	<i>rachel.harrington@eku.edu</i>	<b>Kowalski, Theodore J</b> University of Dayton	<i>tkowalski1@dayton.edu</i>
<b>Harshman, Jason R</b> University of Iowa	<i>jason-harshman@uiowa.edu</i>	<b>Kroeker, Julia</b> University of Nebraska-Lincoln	<i>jkroeker@huskers.unl.edu</i>
<b>Hartlep, Nicholas D</b> Illinois State University	<i>ndhartl@ilstu.edu</i>	<b>Kushner Benson, Susan N</b> The University of Akron	<i>snk@uakron.edu</i>
<b>Hasebe, Yuki</b> Western Illinois University	<i>yhasebe@yahoo.com</i>	<b>Landerman, Katelyn</b> St. Norbert College	<i>katelyn.landerman@snc.edu</i>
<b>Hemingway, Jennie</b> Western Illinois University	<i>ja-hemingway@wiu.edu</i>	<b>Larson, Mimi</b> Concordia University-Chicago	<i>crf_larsonml@cuchicago.edu</i>
<b>Hensley, Brandon O.</b> Illinois State University	<i>bohensl@ilstu.edu</i>	<b>Larson, William</b> Ohio University	<i>larsonw@ohio.edu</i>
<b>Hitchcock, John</b> Indiana University	<i>jhhitchc@indiana.edu</i>	<b>Lash, Kelly</b> The Ohio State University	<i>lash.57@buckeyemail.osu.edu</i>
<b>Hoffman, Emily Brown</b> University of Illinois - Chicago	<i>mrs.ebhoffman@gmail.com</i>	<b>Lawson, Tera</b> Iowa State University	<i>tjlawson@iastate.edu</i>
<b>Hohenbrink, JoAnn</b> Ohio Dominican University	<i>hohenbrj@ohiodominican.edu</i>	<b>Lee, Cheu-Jey</b> Indiana University-Purdue University Fort Wayne	<i>leecg@ipfw.edu</i>
<b>Holt, Janet</b> Illinois Education Research Council	<i>janholt@siue.edu</i>	<b>Lentz, Lorelle</b> University of Cincinnati	<i>lentzel@ucmail.uc.edu</i>
<b>Hong, Chenda</b> Northern Illinois University	<i>z1722652@students.niu.edu</i>	<b>Lessly, Chris</b> Indiana Wesleyan University	<i>chris.lessly@indwes.edu</i>
<b>Honig, Sheryl</b> Northern Illinois University	<i>shonig@niu.edu</i>	<b>Lewis, Marsha S</b> Ohio University	<i>lewism5@ohio.edu</i>
<b>Huang, Grace H.C.</b> Cleveland State University	<i>g.h.huang@csuohio.edu</i>	<b>Li, Nan</b> Miami University	<i>lin2@miamioh.edu</i>
<b>Husband, Terry</b> Illinois State University	<i>thusban@ilstu.edu</i>	<b>Li, Ting</b> Miami University	<i>lit@miamioh.edu</i>
<b>Hutzel, Margaret</b> Ohio University	<i>hutzel@ohio.edu</i>	<b>Lichtenberger, Eric</b> Illinois Education Research Council	<i>elichte@siue.edu</i>
<b>Jaramillo, Nadia V</b> Iowa State University	<i>nadiaj@iastate.edu</i>	<b>Lim, Alicia Zhi Hoon</b> University of Minnesota	<i>limxx357@umn.edu</i>
<b>Jefferis, Jacob</b> Secondary Schools	<i>JeJefferis@gmail.com</i>	<b>Lindsey, Jill L</b> Wright State University	<i>jill.lindsey@wright.edu</i>
<b>Jimenez Soffa, Sara</b> Edgewood College	<i>sjimenezsoffa@edgewood.edu</i>	<b>Liu, Xiongyi</b> Cleveland State University	<i>x.liu6@csuohio.edu</i>
<b>Johnson, Doris G.</b> Wright State University	<i>doris.johnson@wright.edu</i>	<b>Lochmiller, Chad R</b> Indiana University, Center for Evaluation & Education Policy	<i>clochmil@indiana.edu</i>
<b>Jonas, Peter M</b> Cardinal Stritch University	<i>pmjonas@stritch.edu</i>	<b>Lu, Yan</b> Miami University	<i>luy3@miamioh.edu</i>
<b>Kalinski, Blair</b> University of Nebraska-Lincoln	<i>blairkalinski@gmail.com</i>	<b>Luke, Jeremy</b> Ohio State University	<i>Luke.jeremy@gmail.com</i>
<b>Karakus, Turkan</b> Ataturk University	<i>turkan.karakus@gmail.com</i>	<b>Lukenchuk, Antonina</b> National Louis University	<i>antonina.lukenchuk@nl.edu</i>
<b>Kibe, Grace</b> University of Memphis	<i>gwkibe@memphis.edu</i>	<b>Lyutykh, Elena</b> Concordia University Chicago	<i>elena.lyutykh@cuchicago.edu</i>

<b>Magiste, Edward J.</b> Cleveland State University	<i>e.j.magiste@vikes.csuohio.edu</i>	<b>Olaughlin, Sean</b> Illinois State University	<i>sdolaug@ilstu.edu</i>
<b>Mansfield, Eric</b> Western Illinois University	<i>EA-MANSFIELD@WIU.EDU</i>	<b>Olsen, Amanda Ashley</b> University of Missouri, 16 Hill Hall, Columbia, MO 65211	<i>aaolsen@mail.missouri.edu</i>
<b>Marchant, Gregory J.</b> Ball State University	<i>gmarchant@bsu.edu</i>	<b>Orr, Maurya</b> Columbia College Chicago	<i>morr@colum.edu</i>
<b>May, Judith Jackson</b> Bowling Green State University	<i>judyjac@bgsu.edu</i>	<b>Otte Allen, Suzanne</b> Edgewood College	<i>sotteallen@edgewood.edu</i>
<b>Mays, Thomas</b> Miami University	<i>maysta@miamioh.edu</i>	<b>Park, Moonyoung</b> Iowa State University	<i>mypark@iastate.edu</i>
<b>Mc Neely, Sharon</b> Argosy University	<i>smcneely@argosy.edu</i>	<b>Pasero, Spencer</b> Fermi National Accelerator Laboratory	<i>pasero@gmail.com</i>
<b>McCaslin, Mark L</b> University of Phoenix	<i>mark.mccaslin@phoenix.edu</i>	<b>Peterson, Jennifer Lynn</b> Illinois State University	<i>jlpete2@ilstu.edu</i>
<b>McCormack, Virginia</b> Ohio Dominican University	<i>mccormav@ohiodominican.edu</i>	<b>Pitcock, Melissa</b> Illinois State University	<i>mepitco@ilstu.edu</i>
<b>McCreary, John J</b> Ball State University	<i>jjmccreary@bsu.edu</i>	<b>Polydore, Catherine L.</b> Eastern Illinois University	<i>cpolydore@eiu.edu</i>
<b>McCubbins, Sara</b> Illinois State University	<i>samccub@gmail.com</i>	<b>Popp, Jacquelynn S.</b> University of Illinois at Chicago (UIC)	<i>jpopp4@uic.edu</i>
<b>McElhiney, Danielle</b> Ohio University	<i>dm356310@ohio.edu</i>	<b>Quirit, Hope</b> Argosy University	<i>htquirit@gmail.com</i>
<b>McLaughlin, Gerry</b> DePaul University	<i>GMCLAUGH@depaul.edu</i>	<b>Reeves, Todd</b> Northern Illinois University	<i>treeves@niu.edu</i>
<b>Mehner, Nick</b> Illinois Education Research Council	<i>nmehner@siue.edu</i>	<b>Robinson-Ervin, Porsha</b> Northern Kentucky University	<i>robinsonep1@nku.edu</i>
<b>Meidl, Christopher</b> St. Norbert College	<i>christopher.meidl@snc.edu</i>	<b>Rodriguez, Aldo</b> Northern Illinois University	<i>whoanseeto@hotmail.com</i>
<b>Menzies, Derek T.</b> Cleveland State University	<i>d.menzies@vikes.csuohio.edu</i>	<b>Rose, Amy D.</b> Northern Illinois University	<i>arose@niu.edu</i>
<b>Michael, Martha</b> Capital University	<i>mmichael@capital.edu</i>	<b>Ross-Gordon, Jovita</b> Texas State University	<i>jrross-gordon@txstate.edu</i>
<b>Militz Frielink, Sarah</b> Center for Policy & Social Justice, Concordia University Chicago	<i>sfrielink@niu.edu</i>	<b>Roush, John R.</b> Morehead State University	<i>jroush@sscc.edu</i>
<b>Miller, Angela Maria</b> University of Cincinnati- Blue Ash	<i>millai@ucmail.uc.edu</i>	<b>Rugutt, John K</b> Illinois State University	<i>jkrugut@ilstu.edu</i>
<b>Moore, Shaun</b> Oakland University	<i>samoore@oakland.edu</i>	<b>Ruhil, Anirudh Virender Singh</b> Ohio University	<i>ruhil@ohio.edu</i>
<b>Morgan, Grant</b> Baylor University	<i>Grant_Morgan@baylor.edu</i>	<b>Sanders, Khahlia</b> University of Cincinnati	<i>sandeka@mail.uc.edu</i>
<b>Mose, Patrick</b> Ohio University	<i>patromose@gmail.com</i>	<b>Schendel, Roland</b> Metropolitan State University of Denver	<i>rschend@ilstu.edu</i>
<b>Motter, Toivo</b> Stan Hywet Hall & Gardens	<i>tmotter@stanhywet.org</i>	<b>Scholes, Roberta Jane</b> University of Missouri	<i>scholesr@missouri.edu</i>
<b>Muehler, Hans E.</b> Naperville, IL Unit District 203	<i>muehler@gmail.com</i>	<b>Schroer, Joseph E</b> Miami University	<i>schroeje@miamioh.edu</i>
<b>Mullen, Laurie</b> Ball State University	<i>lmullen@icloud.com</i>	<b>Schwartz, J.</b> Northern Illinois University	<i>jschwartz1@niu.edu</i>
<b>Narayanan, Balaguruprasad</b> Indiana State University	<i>bnarayanan@sycamores.indstate.edu</i>	<b>Sears, Martha</b> Bowling Green State University	<i>megsear@bgsu.edu</i>
<b>Nelson, Jessi</b> St. Norbert College	<i>jessi.nelson@snc.edu</i>	<b>Sellen, Joanne</b> Western Illinois University	<i>je-sellen@wiu.edu</i>
<b>Nunez, Isabel</b> Center for Policy & Social Justice, Concordia University	<i>isabel.nunez@cuchicago.edu</i>	<b>Shaffer, Sharon A</b> Bowling Green State University	<i>sshaffe@bgsu.edu</i>
<b>Nur-Awaleh, Mohamed A.</b> Illinois State University	<i>manuraw@ilstu.edu</i>	<b>Sharma, Rashmi</b> Ohio University	<i>rashmi.ua@gmail.com</i>
		<b>Sheldon, Timothy D.</b> University of Minnesota	<i>sheld005@umn.edu</i>



<b>Shipman, Melanie</b> Youngstown State University	<i>mshipman@ysu.edu</i>	<b>Woolard, Chad</b> Illinois State University	<i>cewoola@ilstu.edu</i>
<b>Smith, M Cecil</b> West Virginia University	<i>MCecil.Smith@mail.wvu.edu</i>	<b>Yi, Sang</b> Miami University	<i>ysis2@miamioh.edu</i>
<b>Smith, Thomas J</b> Northern Illinois University	<i>tjsmith44@yahoo.com</i>	<b>Yildiz, Suleyman</b> Istanbul University	<i>mutluyarinlar@hotmail.com</i>
<b>Soboleski, Penny</b> Bowling Green State University	<i>psoboleski@gmail.com</i>	<b>Young, Teresa</b> Xavier University	<i>youngt3@xavier.edu</i>
<b>Stevens, Sharon</b> Western Illinois University	<i>sr-stevens2@wiu.edu</i>	<b>Zaleski, Diana</b> Illinois State Board of Education	<i>dzaleski07@gmail.com</i>
<b>Stuckey-Mickell, Tracey A</b> The Ohio State University	<i>stuckey-mickell.1@osu.edu</i>	<b>Zhang, Jinghua</b> Miami University	<i>zhangj27@miamioh.edu</i>
<b>Taabu, Simon</b> Illinois State University	<i>mohamednurawaleh@gmail.com</i>	<b>Zhang, Lei</b> Indiana State University	<i>lzhang4@sycamores.indstate.edu</i>
<b>Tas, Yasemin</b> Ataturk University	<i>tasyase@gmail.com</i>	<b>Zhang, Yiyuan</b> Miami University	<i>zhangy51@miamioh.edu</i>
<b>Tawfik, Andrew</b> Concordia University Chicago	<i>andrew.tawfik@cuchicago.edu</i>	<b>Zhao, Yuhao</b> Miami University	<i>zhaoy14@miamioh.edu</i>
<b>Thompson, Cynthia Lucretia</b> Illinois State University	<i>tkf1992@yahoo.com</i>	<b>Zhu, Kun</b> Miami University	<i>zhuk@miamioh.edu</i>
<b>Tindall, Hillary</b> The Ohio State University	<i>tindall.27@buckeyemail.osu.edu</i>	<b>Zimmerman, Aaron Samuel</b> Michigan State University	<i>Aaron.Samuel.Zimmerman@gmail.com</i>
<b>Tonks, Stephen M.</b> Northern Illinois University	<i>stonks@niu.edu</i>	<b>Zuel, Brian</b> Indiana State University	<i>bzuel@sycamores.indstate.edu</i>
<b>Torquati, Julia</b> University of Nebraska-Lincoln	<i>jtorquati1@unl.edu</i>	<b>Zywicki, Stephanie</b> Purdue University	<i>szywicki@purdue.edu</i>
<b>Townsend, Robert T</b> Indiana Wesleyan University	<i>robert.townsend@indwes.edu</i>		
<b>Trask, Tisa</b> Illinois State University	<i>tmtrask@ilstu.edu</i>		
<b>Trombetta, Adriana</b> Cleveland State University	<i>adritrombetta@gmail.com</i>		
<b>Tshita, Merveille</b> University of Nebraska-Lincoln	<i>tshita_m@yahoo.fr</i>		
<b>Unruh, Brett M</b> Argosy University	<i>bunruh@maine207.org</i>		
<b>Walker, David A.</b> Northern Illinois University	<i>dawalker@niu.edu</i>		
<b>Wang, Aimin</b> Miami University	<i>wanga@MiamiOH.edu</i>		
<b>Wang, Yikang</b> Miami University	<i>wangy33@miamioh.edu</i>		
<b>Weinert, Dan J.</b> Palmer College of Chiropractic	<i>dan_weinert@palmer.edu</i>		
<b>White, Robyn</b> Madisonville Education and Assistance Center	<i>robyn.white@fuse.net</i>		
<b>Whittingham, Colleen</b> University of Illinois Chicago	<i>cwhitt2@uic.edu</i>		
<b>Wickland, Trisha</b> Concordia University Chicago	<i>crf_wickltr@cuchicago.edu</i>		
<b>Williams, Nicole</b> The University of Findlay	<i>williamsn1@findlay.edu</i>		
<b>Williams, Ron</b> Western Illinois University	<i>rc-williams@wiu.edu</i>		
<b>Wilson, John</b> Illinois State University	<i>collegefreedom@yahoo.com</i>		
<b>Wolf, Chyrese Stephanie</b> Chicago State University	<i>cwolf@csu.edu</i>		

## Room Guide

### Bonbright Room

Thursday	November 13	8:00 am to 9:20 am	Division K	Space and Place: Learning to Teach
Thursday	November 13	9:30 am to 10:50 am	Division D	Psychometrics in Practice: Measuring Humanitarian Constructs
Thursday	November 13	1:40 pm to 3:00 pm	Division J	Using Technology in Post-Secondary Classrooms
Friday	November 14	8:00 am to 9:20 am	Division D	Utilization of Research in Practice: Making Useful Applications
Friday	November 14	10:40 am to 12:00 pm	Division J	Business Meeting
Friday	November 14	1:40 pm to 3:00 pm	Division H	Predicting and Assessing Student Success
Friday	November 14	3:10 pm to 4:30 pm	Division H	Business Meeting - Guest Speaker Steve Cordogan

### Cummings Room

Thursday	November 13	8:00 am to 9:20 am	Division E	Preschool to College: Development and Well-Being in and outside the Classroom
Thursday	November 13	9:30 am to 10:50 am	Division H	Innovative Course and Curriculum Evaluation
Thursday	November 13	1:40 pm to 3:00 pm	Division C	Novel Approaches to Learning
Thursday	November 13	3:10 pm to 4:30 pm	Division F	Historical Look at Civil Engagement, Adjunct Oppression, Perceptions of Women, and Student Criminal Backgrounds
Thursday	November 13	4:40 pm to 6:00 pm	Division A	Teacher Compensation, Quality and Teacher Dispositions
Friday	November 14	8:00 am to 9:20 am	Division A	Internationalizing and global education
Friday	November 14	10:40 am to 12:00 pm	Division I	Business Meeting
Friday	November 14	1:40 pm to 3:00 pm	Division L	Policy and Practice on Educational Evaluation: Voices from Teachers, Administrators, and Educational Researchers
Friday	November 14	3:10 pm to 4:30 pm	Division J	Using Institutional Data to Improve Programs in Higher Education

### Grand Ballroom

Friday	November 14	9:30 am to 10:40 am	MWERA	Business Meeting
Friday	November 14	12:00 pm to 1:30 pm	Keynote Address - Simone Conceição	Educate, Motivate, and Support: Meeting the Needs of 21st Century Tech-Savvy Learners

### Haven Room

Thursday	November 13	8:00 am to 9:20 am	Division I	Research in Education in the Professions
Thursday	November 13	9:30 am to 10:50 am	Division B	Variety of Approaches to Conducting Research in Curriculum Development
Thursday	November 13	1:40 pm to 3:00 pm	Division D	Polytomous IRT Modeling: How to Poly!
Thursday	November 13	3:10 pm to 4:30 pm	Division K	Videagogy: Using Short, Funny Videos to Enhance Learning
Thursday	November 13	4:40 pm to 6:00 pm	Division L	Educational Policy Impacted by Assessment: Teachers and Students on An International Scale
Friday	November 14	8:00 am to 9:20 am	Division L	The Changing Social Dynamics at Schools under the Influence of High Technology
Friday	November 14	10:40 am to 12:00 pm	Division G	Business Meeting
Friday	November 14	1:40 pm to 3:00 pm	Division D	Methodological Insights: Research on Influencing Academic Progress and Achievement
Friday	November 14	3:10 pm to 4:30 pm	Division K	Beginning and Growing as Educators
Saturday	November 15	8:00 am to 12:00 pm	MWERA	Board of Directors Meeting

### Hinman Auditorium

Thursday	November 13	8:00 am to 9:20 am	Division A	Leadership roles and change in P-12 and higher education
Thursday	November 13	11:00 am to 12:00 pm	Presidential Address: David Walker	International Engagement: Trends and Possibilities

Thursday	November 13	1:40 pm to 3:00 pm	Division L Business Meeting - Guest Speakers
Thursday	November 13	3:10 pm to 4:30 pm	Division D Business Meeting: Throwback: Quantitative/Qualitative Debate
Friday	November 14	8:00 am to 9:20 am	Division K Teachers and Technology
Friday	November 14	10:40 am to 12:00 pm	Division K Business Meeting
Friday	November 14	1:40 pm to 3:00 pm	Division C Culturally Responsive Computer-Based Social Skills Instruction for At-Risk Culturally Diverse Urban Learners
Friday	November 14	3:10 pm to 4:30 pm	Division A Funding, Technology and Educational Entrepreneurship

**Hinman Foyer**

Thursday	November 13	6:00 pm to 8:00 pm	MWERA President's Cracker Barrel
----------	-------------	--------------------	----------------------------------

**Holgate Room**

Thursday	November 13	12:00 pm to 1:00 pm	MWERA Division Chairs Luncheon
Friday	November 14	8:00 am to 9:20 am	MWERA Association Council Meeting
Friday	November 14	10:40 am to 12:00 pm	Division E Business Meeting
Friday	November 14	1:40 pm to 3:00 pm	Division B Business Meeting
Friday	November 14	3:10 pm to 4:30 pm	Division G Building Character in Schools

**James Foyer**

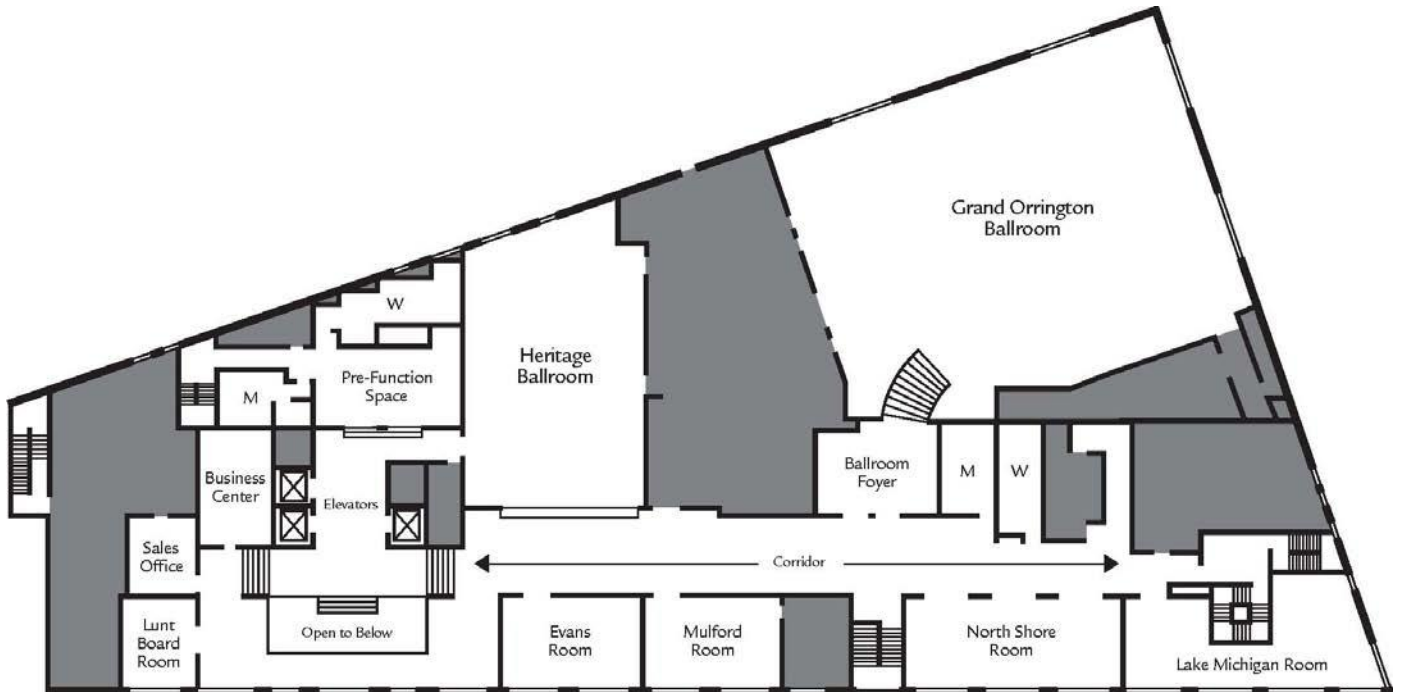
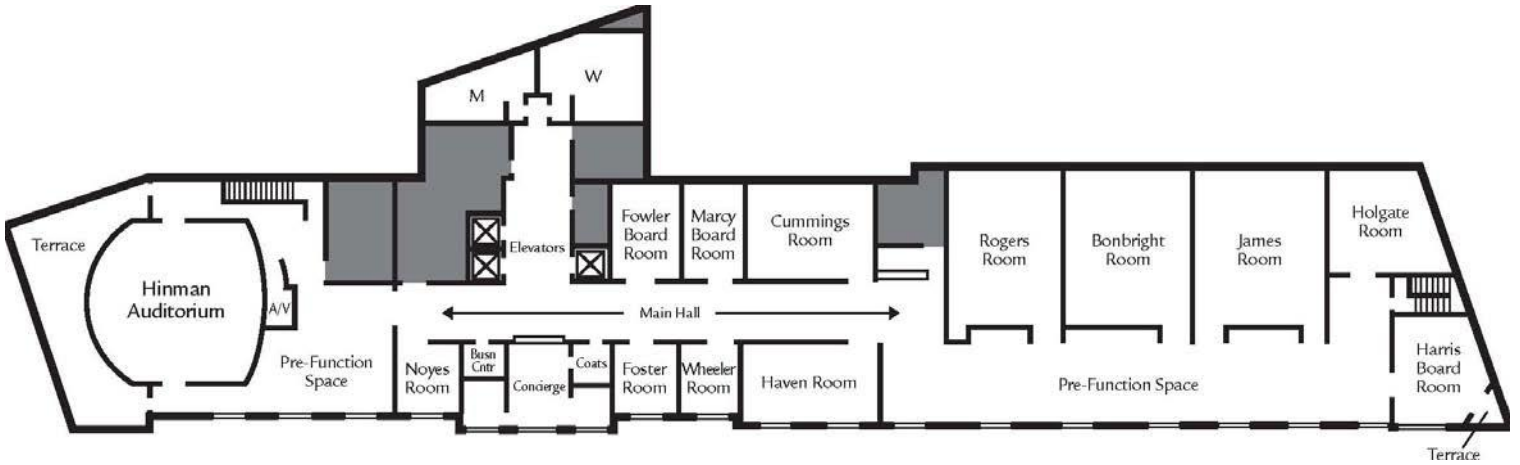
Friday	November 14	8:00 am to 9:20 am	Division C: Teaching and Learning Poster Session
Friday	November 14	8:00 am to 9:20 am	Division H: Research, Evaluation, & Assessment in Schools Poster Session

**James Room**

Thursday	November 13	8:00 am to 9:20 am	Division K Engaging in Literacy Practices to Increase Learning
Thursday	November 13	9:30 am to 10:50 am	Division C Examining Teaching & Learning: From Technology to Music
Thursday	November 13	1:40 pm to 3:00 pm	Division A Technology and Online Education in Higher Education
Thursday	November 13	3:10 pm to 4:30 pm	Division G Evaluating Social and Economic Factors in School Settings
Thursday	November 13	4:40 pm to 6:00 pm	Division K Journey of Learning to Teach
Friday	November 14	8:00 am to 9:20 am	Division K Professional Educators Initiative
Friday	November 14	10:40 am to 12:00 pm	Division C Business Meeting
Friday	November 14	1:40 pm to 3:00 pm	Division K Supporting Teacher Development
Friday	November 14	3:10 pm to 4:30 pm	Division D Instrument Development: Examining Factor Structures

**Rogers Room**

Thursday	November 13	8:00 am to 9:20 am	Division B How to utilize media technology in early childhood classrooms
Thursday	November 13	9:30 am to 10:50 am	Division K Attending to Diverse Student Populations
Thursday	November 13	1:40 pm to 3:00 pm	Division K Technology in the Classroom
Thursday	November 13	3:10 pm to 4:30 pm	Division H Measuring Student Growth in Illinois
Thursday	November 13	4:40 pm to 6:00 pm	Division C Second Language Learning: Technology & Multicultural Variables
Friday	November 14	8:00 am to 9:20 am	Division K Culture in the Teaching Environment
Friday	November 14	10:40 am to 12:00 pm	Division A Business Meeting
Friday	November 14	10:40 am to 12:00 pm	Division F Business Meeting
Friday	November 14	1:40 pm to 3:00 pm	Division G Keeping Students Motivated
Friday	November 14	3:10 pm to 4:30 pm	Division C Research-Based Best Practices in the Development of Quality Online Courses for Graduate, Undergraduate, and K-12 Students: An Interactive Workshop



## **MWERA: Expectations of Presenters**

All persons, including graduate students, presenting at the 2014 Annual Meeting are expected to be **members in good standing** and *to register for the full meeting*.

Presenters whose papers have been accepted to a session with a Session Chair and/or Session Discussant are *expected to upload* a completed version of their conference paper through the MWERA website *no later than October 22, 2014*. Papers not uploaded to the website by this date may be dropped from the program. Presenters should provide copies of their papers in either paper or electronic form to attendees at their sessions.

LCD projectors and screens will be provided by MWERA in presentation rooms. Presenters needing additional computer or audio-visual equipment must make their own arrangements for such equipment (rental from the hotel may be possible at the presenter's own expense).

MWERA reserves the right to reproduce and distribute summaries and abstracts of all accepted proposals, including making such works available in a printed Program Abstract, through the MWERA website, and in press releases promoting the Annual Meeting and the organization. *As a condition of acceptance, all authors of papers accepted to the 2014 Annual Meeting explicitly grant MWERA the right to reproduce their work's summary and/or abstract in these ways.* Such limited distribution does not preclude any subsequent publication of the work by the author(s).

*Authors of accepted proposals assume the ethical and professional responsibility to appear at the Annual Meeting and to participate in their presentation or assigned session.* When circumstances preclude the author(s) from doing so, it is the responsibility of the author(s) to arrange a suitable substitute and to notify the Program Chair in advance.

## MWERA: The Responsibilities of Session Chairs

Adapted from Katrina Daytner (*MWER*, Summer 2006) in *The roles of responsibilities of MWERA participants: Building a scholarly community by presenting, responding, and attending*, the three main responsibilities of **Session Chairs** are to:

1. Take charge, 2. Introduce the session and speakers, and 3. Provide context and structure.

**Taking charge** involves the following:

- Keeping a strict time line for presentations to ensure that all of the session's components (presentations, discussant comments, and question-answer portions) receive adequate time (for instance, allowing 16 minutes each as a recommended target for 4 presentations that include a discussant and allows time at the end of the session for group discussion; 13 minutes each as a target is recommended for 5 presentations that include a discussant, etc.)
- Working with the MWERA AV person to make sure that the one computer being used for the session is up, running, and connected to the LCD projector, if there is one for the session. Making sure that all session presentations have been loaded to that computer before the session starts. Directly contacting the MWERA AV person (not the hotel AV person) if there are any AV issues (see MWERA registration desk if help is needed).
- If a session evaluation is used for this conference, ensuring that each audience member and presenter receives an evaluation form at the beginning of the session to be completed at the end of the session; once completed, the session chair should collect the evaluations and turn them into the MWERA registration desk.
- Completing your Session Report (attached) and returning it to the MWERA registration desk

**Introducing the session and speakers** involves the following:

- Determining the order of presentations following the program, informing each speaker and the discussant about their time allotments before the session, welcoming the audience on behalf of the Program committee, introducing the session and the sponsoring division, and introducing the discussant.
- Making sure that everyone at the session has an appropriate, current MWERA nametag.
- Asking people to turn off cell phones and other non-essential electronic devices.

**Providing context and structure** involves the following:

- Providing a brief explanation of the substantive content of the session to provide audience members with a context for the information.
- Taking control of the question-and-answer portion so that no one person asks all the questions or makes all of the comments and that multiple presenters have the opportunity to respond to the questions posed.

## MWERA: The Responsibilities of Session Discussants

Adapted from Katrina Daytner (*MWER*, Summer 2006) in *The roles of responsibilities of MWERA participants: Building a scholarly community by presenting, responding, and attending*, the three main responsibilities of **Session Discussants** are to:

1. Discuss the papers, 2. Balance synthesis and individual attention, and 3. Balance praise and criticism.

**Thoughtful discussion of the papers** is the main responsibility of the session Discussant.

- Read the papers that you have received prior to the conference. Pay attention to those presentations for which you did not receive papers and try, the best you can, to identify themes and insights to highlight in your comments.
- Thank the authors for their efforts and help the Session Chair manage the session, if needed.
- Audience members look to a discussant to provide some analysis and synthesis of the papers and therefore often feel shortchanged when a discussant defers to the question-and-answer period rather than providing any unique insights.

**Balancing both individual feedback and meaningful synthesis** is a vitally important role of the Discussant.

- Be sure to comment on each individual paper to provide the presenters constructive feedback on their work, addressing both strengths and limitations. Be nurturing in your role and praise good scholarship---MWERA's mission is to help new and emerging scholars.
- Also, provide a meaningful synthesis of the work so that conference attendees come away with a better understanding of the significance of both the individual papers and the group of papers.

**Providing service** involves the following:

- Read the attached responsibilities of session chairs. If the session chair is not prompt to the session, start by helping with the AV set-up, making sure the presenters are present, organizing where people sit, etc. If the chair does not show up, take over and get the session going on time.
- Completing your Session Report (attached) and returning it to the MWERA registration desk

# MID-WESTERN EDUCATIONAL RESEARCH ASSOCIATION SESSION REPORT FOR CHAIRS AND DISCUSSANTS

**Your feedback is very important to the Program Committee  
and will help us improve future MWERA conferences.**

Please return the completed Session Report form to the Registration Desk. Thank you.

Session Number \_\_\_\_\_ Division: \_\_\_\_\_ Session Title: \_\_\_\_\_

Type of Session (check one)  Paper  Business Mtg.  Workshop  Symposium  Other

1. Were you the Session Chair or Session Discussant?  Chair  Discussant
2. How many total people attended the session? \_\_\_\_\_
3. Were the facilities and technology adequate?  Yes  No
4. If facilities and technology were not adequate, please comment on any problems:  
  
\_\_\_\_\_

5. Did all presenters attend the session?  Yes  No
6. If any presenters did not attend, please list them here (name and institution):  
  
\_\_\_\_\_

7. Among those presents who did attend, were all on time to the session?  Yes  No
8. Did all presenters submit papers to the Chair and/or Discussant before the deadline?  Yes  No
9. If any presenters did not submit papers to the Chair and/or Discussant before the deadline, please provide more details:  
  
\_\_\_\_\_

10. How many presenters provided handouts? \_\_\_\_\_
11. How many presenters provided complete papers? \_\_\_\_\_
12. Please explain further, including such information as whether enough handouts were provided for all session attendees and what types of handouts were given:  
  
\_\_\_\_\_

**Please provide any additional comments about this session or general recommendations for future MWERA conference. Use the back of this paper, if needed.**